

Job Name: _____
 Model: _____
 Type: _____
 Date: _____



■ specifications: internal

The **XMR** is configured with a 120/277VAC input. Standard features include solid-state charging circuitry, low voltage disconnect, AC lockout and brownout protection. Maintenance free 6V 4.5Ah sealed lead calcium battery.

■ specifications: external

The **XMR** is constructed from high quality 5VA flame & corrosion resistant, high-impact thermoplastic. White finish is standard (black optional). The universal mounting bracket is easily snapped onto the **XMR** housing. Knockout provided for conduit installations.

■ emergency heads

Two fully adjustable, semi-recessed 7W LED MR16 lamp heads deliver 76' on-center spacing (7.5' mounting height). The gimbal style head assemblies allow precise positioning.

■ specifications: electrical

BATTERY: The **XMR** is configured standard with a single 6V 4.5Ah maintenance-free, sealed lead calcium battery. 90 minutes emergency duration minimum. 24 hour charge time.

CIRCUIT: The **XMR** features 120/277VAC input with current limit protection. External test switch and monitor LED are standard.

| INPUT WATTS (W) | | INPUT AMPS (A) | |
|-----------------|------|----------------|-------|
| 120V | 277V | 120V | 277V |
| 4.2 | 5.2 | 0.039 | 0.021 |

■ certifications

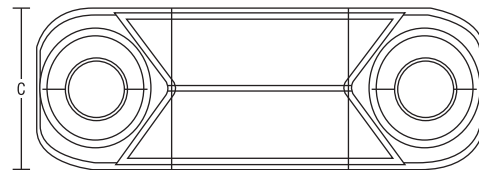
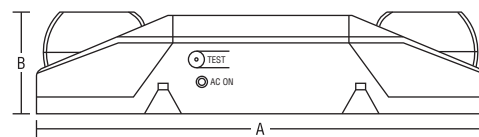
- UL924
- NFPA 101 Life Safety Code
- NEC, OSHA, Local and State Codes
- UL Listed for Damp Locations (20°C to 40°C)

■ ordering information

| Series | Capacity | Lamps | Options |
|--------|-------------|-------------------|--|
| XMR | S1 (6V 14W) | HO (7W LED lamps) | B (black finish) USA (assembled in USA) |

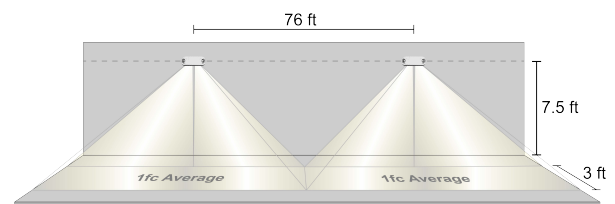
EXAMPLE: XMR S1HO

■ dimensions



| Series | A | B | C |
|--------|----------------|--------------|-------------|
| XMR | 13.7" 348mm | 3.1" 79mm | 5" 127mm |

■ spacing



Disclosure: Spacing is measured in lab conditions with an assumed open space, no obstructions and reflection rates of 80 (ceiling)/50 (walls)/20 (floor). Actual spacing may vary depending on what environment the fixture is installed in.

■ warranty

The **XMR** comes with a 3-year factory warranty. Lamps are not covered under the warranty. Deliberate damage, misuse, or improper installation effectively cancel the warranty.