

PIR Occupancy Sensor

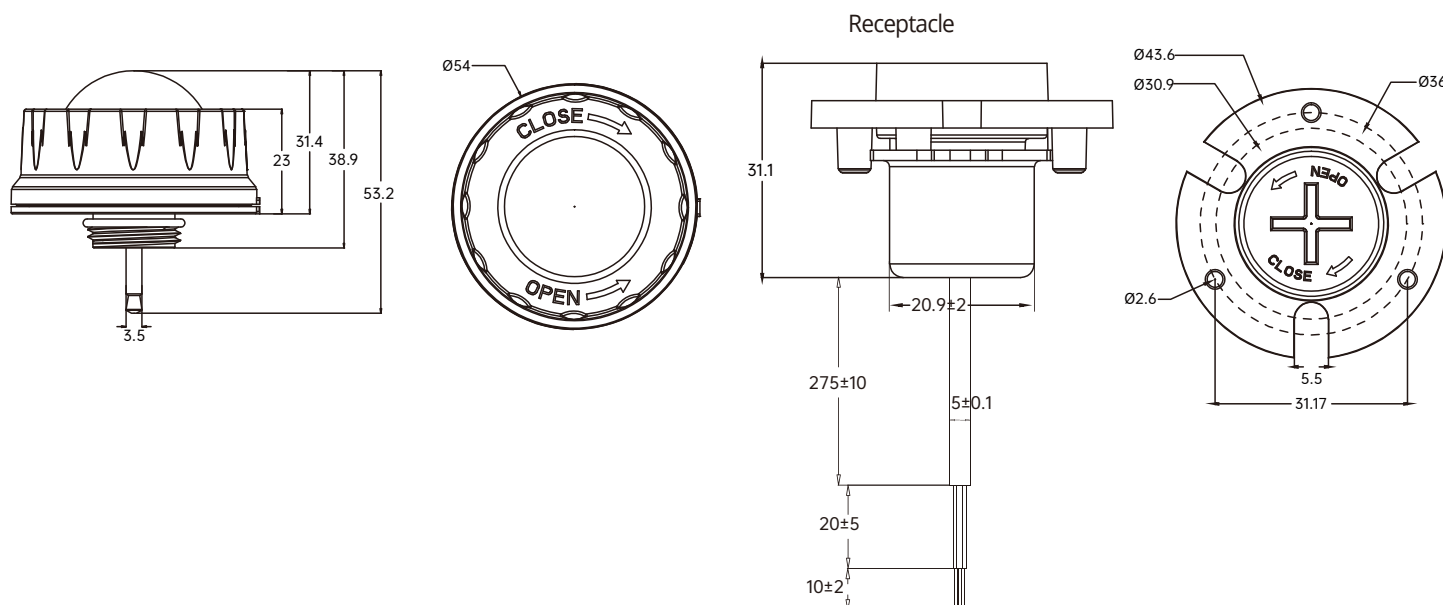
Features & Benefits

- PIR sensor head, 12VDC powered, remote control
- Bi-level dimming, daylight threshold and dusk/dawn function
- With audio jack, suitable for UFO high bay application
- UL certified



Dimensions

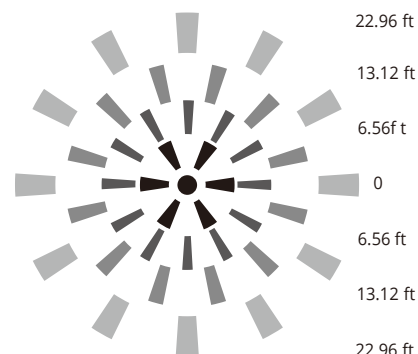
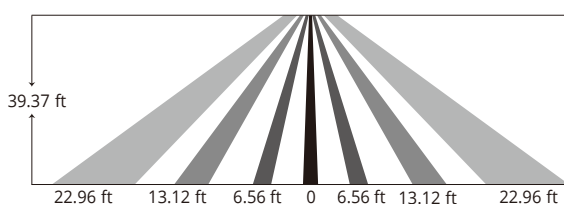
Unit:mm



Detection Coverage

Mounting Height
<12m/39.37ft Ceiling Mounted

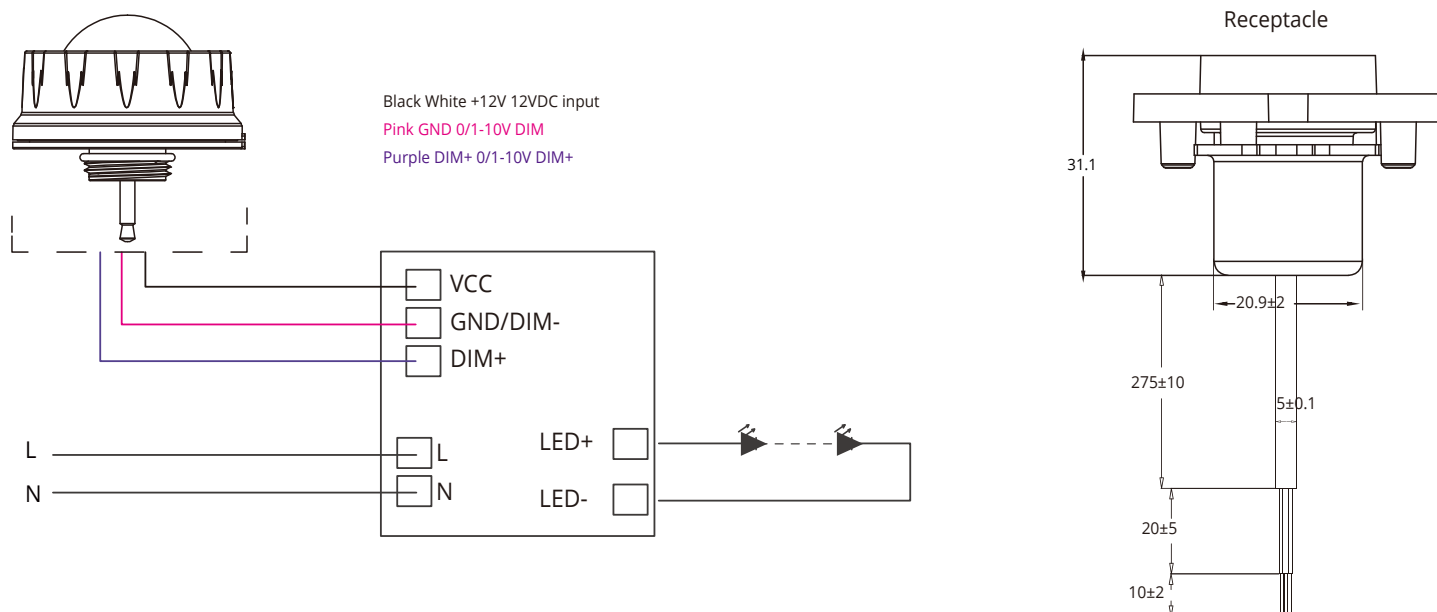
Detection Distance Radius
3-7m/9.84-22.96ft



Parameters

Model NO.		VALOSP
PIR INFORMATION	Infrared Wavelength	5-14um
	Output Signal Peak	≥3500mV
	Installation Height	12 m / 39 ft Max.
	Detection Distance	≥3 m / 9 ft
	Warranty	3 Years
SENSOR PARAMETER	Detection Area	25% / 50% / 75% / 100%
	Holdtime	5s / 30s / 1min / 3min / 5min / 10min / 20min / 30min
	Daylight Threshold	Disable/ 2lux/ 10lux/ 30lux/ 50lux/ 80lux/ 120lux
	Standby Dimming Level	10% / 20% / 30% / 50%
	Standby Period	0s / 10s / 30s / 1min / 5min / 10min / 30min / 60min+∞
	Dusk / Dawn Sensing / Photocell	Daylight threshold as 30lux/ 50lux/ 80lux/ 120lux Standby period as +∞ ; Standby dimming level as 10% / 20% / 30%
	Default Program	Detection Area - 100% Hold Time - 5S Daylight Threshold - disable Standby Period - 0S Standby Dimming Level - 10%
INPUT	Control	OS5REM, the LCD screen display remote (purchase separately)
	Input Range	12VDC
	Voltage Range	10-15VDC
OUTPUT	Current	≥30mA
	Signal	DIM 0-10V
	Connection	12VDC input/ Black&White wire; DIM+/ Purple wire; DIM-/ Pink wire
ENVIRONMENT	Stand-by Power	<30mA Power Consumption
	Working Temp	-20°C~+60°C
	Storage Temp	-40°C~+80°C Humidity: 85% (non-condensation)
CERTIFICATE & STANDARDS	Certification	UL (E529048)
	Environmental Requirements	In accordance with CE ROHS
	IP Rating	IP20
PACKAGE	Silk-Printing	Lasering
	Packing Description	1pcs / white neutral box
	Qty/ctn(pcs)	120
	Net Weight/pcs (kg)	0.05
	Gross Weight/CTN (kg)	6.6
	Carton Size (cm)	40*30*25

Wiring Diagram



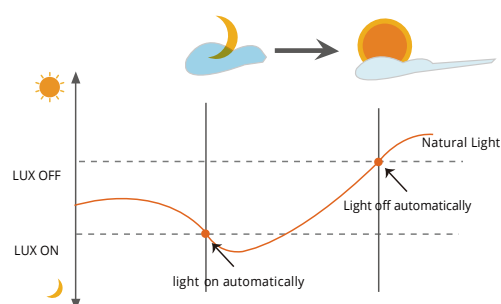
Performance

Dusk-to-Dawn Function

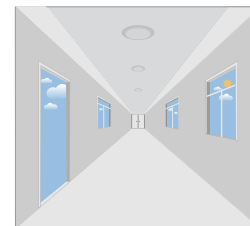
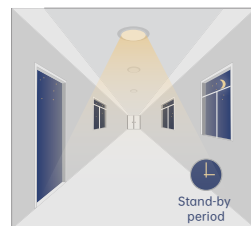
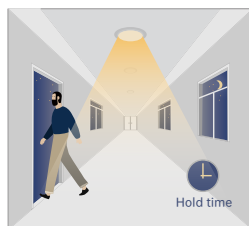
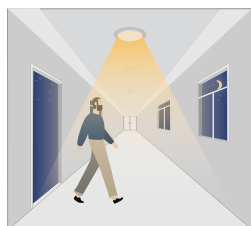
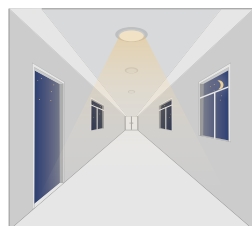
Sensor is able to differentiate artificial light brightness from natural light after installed inside the fixture, and automatically turn off light when ambient brightness exceeds preset lux level.

Pre-condition of Dusk-to-Dawn Function:

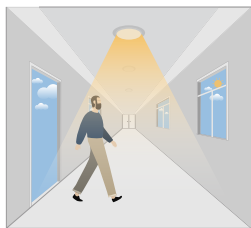
1. Standby period is $+\infty$
2. Standby dimming level is on 10%, 20% or 30%
3. Daylight threshold is on 30lux/ 50lux/ 80lux/ 120lux



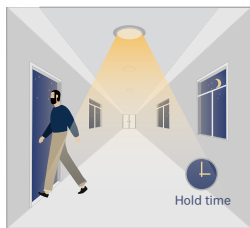
1. With Dusk/Dawn Function



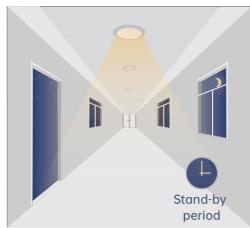
2. With Daylight Disabled



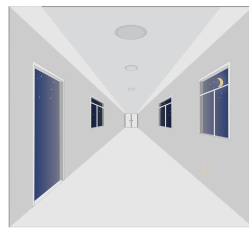
Sensor turns ON light when motion is detected



Sensor keeps light ON for a hold time period after motion leaves

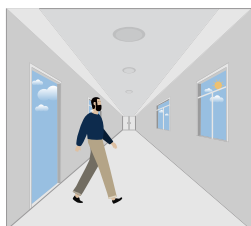


Sensor dims light to standby dimming level after hold time if there is still no motion

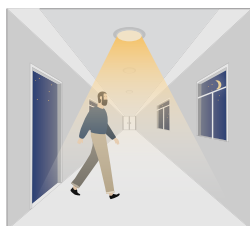


Sensor turns light OFF after standby period

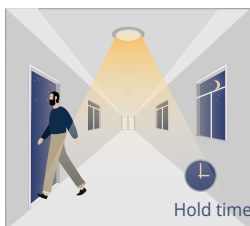
3. With Daylight Threshold



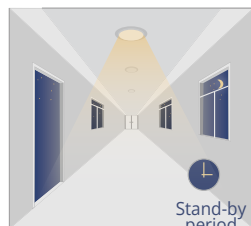
With sufficient daylight, the sensor keeps light OFF even when motion is detected



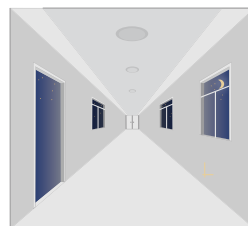
With insufficient daylight, the sensor turns light ON when motion is detected



After there's no motion detected, the sensor keeps light ON 100% for hold time



After hold time, sensor dims light to standby dimming level for standby period; If the standby period has been set as 0s, sensor turns light OFF automatically after hold time.



The sensor turns OFF light automatically after the standby period when there's no motion detected



Attention

1. The sensor should be installed by qualified electrician and ensure power is OFF before installation
2. Please read the instructions carefully before using the product and store safely for future reference
3. We reserve the right to modify any incorrect text, image and technical parameters
4. Any unauthorized modification is forbidden, otherwise all guarantees will be immediately invalid
5. Product specifications subject to change without notice

APPLICATION NOTES

- Suitable for indoor application, half/completely outdoor environment conditions might trigger the sensor
- Suitable for ceiling mount installation, adjust sensitivity properly if it's installed on side-wall because it will be more sensitive
- PIR sensor can't be placed inside any material, fresnel lens must be completely exposed in air
- Fresnel lens of the PIR sensor must be lower than light fixture
- Not a suitable environment if there's sudden changes in temperature of airflow for PIR sensor
- Not a suitable environment if there are shelves or obstacles blocking the sensor from the presence area
- Detection area depends on fresnel lens to function properly
- Detection distance performance works better when moving parallel rather than moving towards the sensor
- Daylight testing on a bright day without shadows or specially designed lampshade or lens
- Dimming performance differs when connected to different drivers; If the driver can't completely turn OFF, sensor can't either
- Input power voltage must be stable with float less than 10%
- The first time sensor is powered ON, light will be ON 100% for about 45 sec then dim to standby level or OFF
- Distance detection is delivered by testing person about 5.5 ft in open area as reference, the result differs by size and speed of moving objects, mounting height and real-life situation