

INSTALLATION INSTRUCTION

IMPORTANT SAFEGUARDS

Read & Follow All Safety Instructions

When using electrical equipment, basic safety precautions should always be followed including:

1. Disconnect power before performing work on electrical equipment (using the light switch to turn off the power is not sufficient to prevent electrical shock)
2. Do not mount near gas or electric heaters
3. Do not install in unstable, loose or breakable surfaces and Do not let objects impact or exert force on the surface of the fixture
4. Use caution when servicing batteries (Battery acid can cause burns to skin and eyes; If acid is spilled on skin or eyes, flush with water and contact a physician immediately)
5. Equipment should be mounted in locations and at heights where it will not be subjected to tampering by unauthorized personnel
6. The use of accessory equipment not recommended by Beghelli Inc may cause an unsafe condition and will void the unit's warranty
7. Do not use this equipment for other than its intended purpose
8. Installation and servicing of this equipment should be performed by a qualified electrician familiar with the product and the hazards involved
9. Allow battery to charge for 24 hours before first use (SA version)
10. To prevent wiring damage or abrasion, do not expose wiring to edges of sheet metal or other sharp objects

NOTE: THIS PRODUCT MUST BE INSTALLED IN ACCORDANCE WITH THE APPLICABLE INSTALLATION CODE BY A PERSON FAMILIAR WITH THE CONSTRUCTION AND OPERATION OF THE PRODUCT AND THE HAZARDS INVOLVED



WARNING

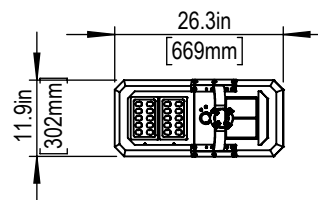
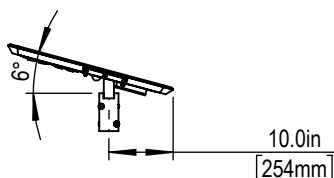
1. Verify correct supply voltage by comparing it with the luminaire label information
2. All wiring connections should be capped with UL approved wire connectors
3. Use minimum 90°C Supply Wires



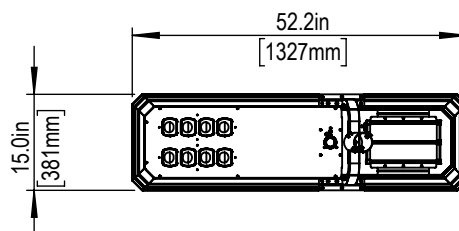
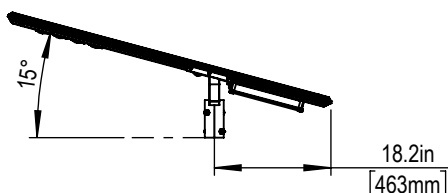
CAUTION

1. Avoid direct eye exposure to the light source while it is on
2. Beware- small parts and packing material may be hazardous to children
3. Risk of burn; Disconnect power and allow fixture to cool before handling fixture

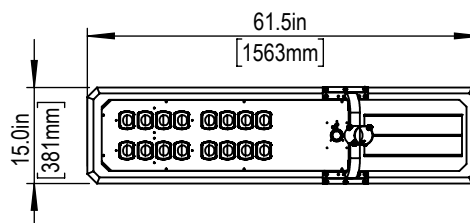
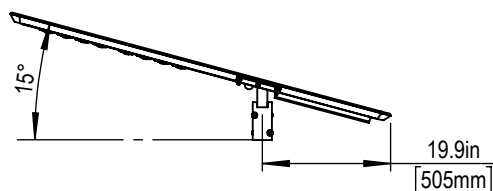
SAVE THESE INSTRUCTIONS



BLS-2A EPA: 2.3 SQ. FT. **WEIGHT:** 16.7 lbs



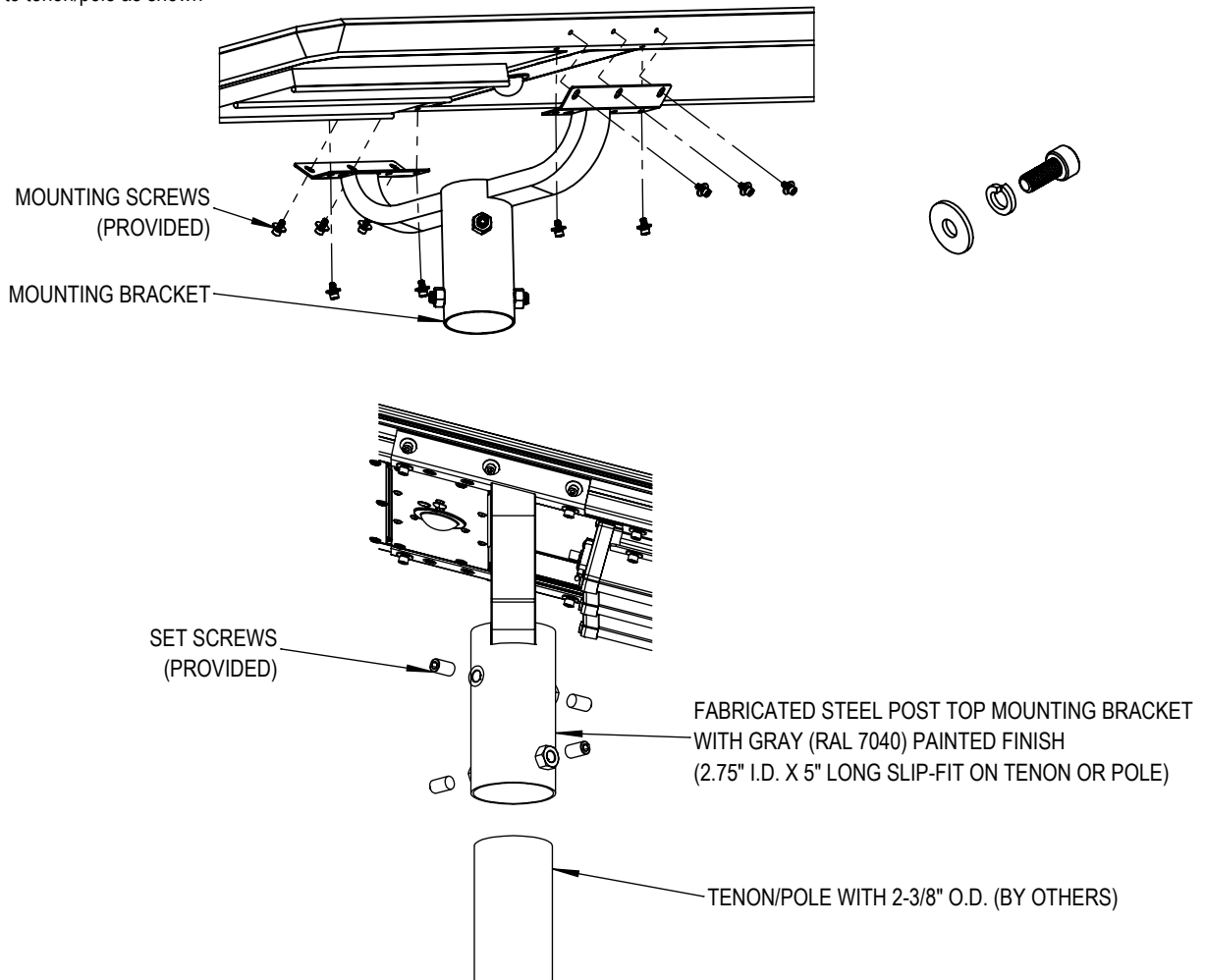
BLS-6A EPA: 4.5 SQ. FT. **WEIGHT:** 29.5 lbs



BLS-8A & 10A EPA: 6.4 SQ. FT. **WEIGHT:** 8A: 42.8 lbs, 10A: 45 lbs

STANDARD BRACKET MOUNTING:

1. Attach bracket to fixture as shown
2. Attach bracket to tenon/pole as shown

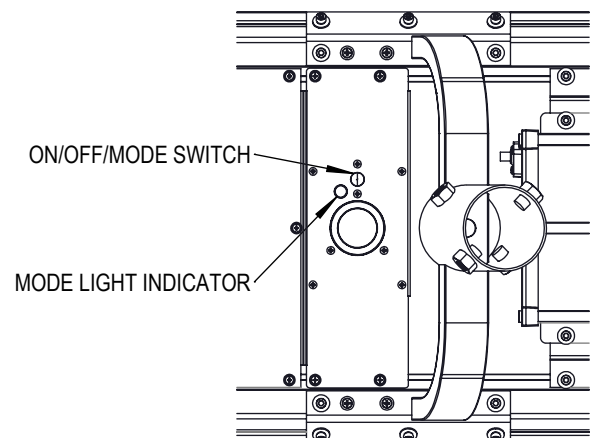


FIXTURE OPERATION:

- PUSH AND HOLD ON/OFF SWITCH FOR 3 SECONDS TO TURN THE FIXTURE ON OR OFF
- QUICK PUSH AND RELEASE ON/OFF/MODE SWITCH TO CHANGE OPERATION MODES:
 - **MODE 1(GREEN LIGHT):** 5HRS @ [100%] + 7HRS @ [30% + PIR 100%]
 - **MODE 2(ORANGE LIGHT):** 5HRS @ [70%] + 7HRS @ [30% + PIR 100%]
 - **MODE 3(RED LIGHT):** 12HRS @ [30% + PIR 100%]

MODE LIGHT INDICATOR: FLASH 3 TIMES EVERY 15 MINUTES DURING THE NIGHT, WHICH INDICATES BATTERY CAPACITY WILL LAST FOR ONE NIGHT

TIPS FOR OUTDOOR SOLAR LIGHTING (PLEASE SEE NEXT PAGE)



TIPS FOR OUTDOOR SOLAR LIGHTING

Outdoor Solar Lights have the advantage of providing an energy free lighting solution. Despite the simplicity of the design, they do sometimes develop problems. The good news is that most of the problems are easy to troubleshoot and fix or can be avoided if known in advance.

INITIAL INSTALLATION - MINIMUM 3 DAYS OF CHARGING BATTERIES WITH FIXTURE ON "OFF" MODE

TEMPERATURE

- Below 0 degrees, may cause the battery to fail (for charging)
- Higher than 45 degrees, may cause the battery to fail (for charging)

WEATHER

- Cloudy or rainy weather will inhibit proper battery charging and may cause the product to not perform as expected; These conditions can reduce light output, not light at all, or create a strobe effect; This does not mean there is a quality issue, the product simply requires direct sunlight to properly charge

ENVIRONMENT

- Dust, bird droppings, insect carcasses and other debris attached to the solar surface will reduce charging efficiency, and can cause inefficient charging and / or damage to the solar panel

PHOTOSENSITIVE ELEMENTS

- Other light sources may be detected by the integrated sensor; This may cause the luminaire to function incorrectly and / or not turn on

RIGHT INSTALLATION

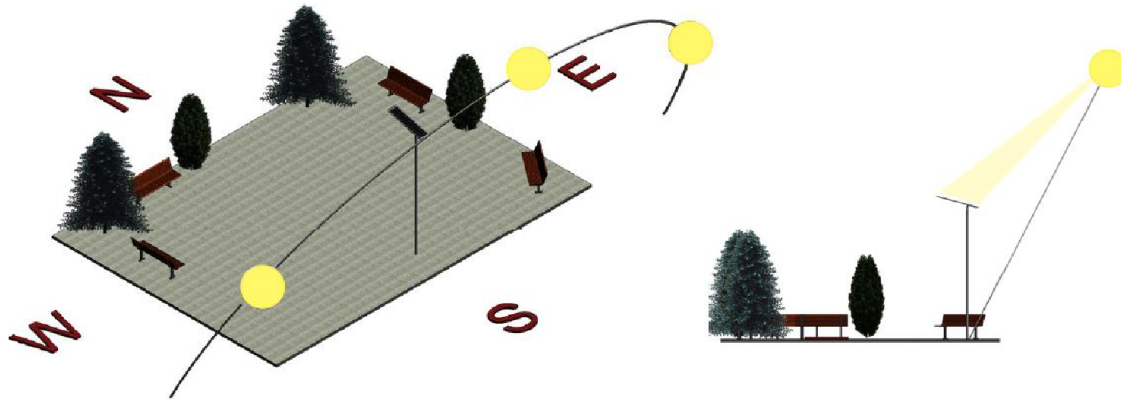
- Inconsistencies in installation, such as varying orientations and angle of inclination may cause inconsistent charging, resulting in varying brightness
- Shadows created by surrounding buildings, trees, or other objects may decrease the efficiency of the solar panel, limiting the batteries charging level; Different levels of battery charge may result in varying brightness and duration

LIABILITY

- Upon proper installation and start-up, Beghelli does not guarantee product performance meets specified performance levels. Unknown environmental conditions effect performance. In no event shall Beghelli be liable for special, incidental or consequential damages related directly or indirectly to the lack of product functionality and performance.

NORTHERN HEMISPHERE

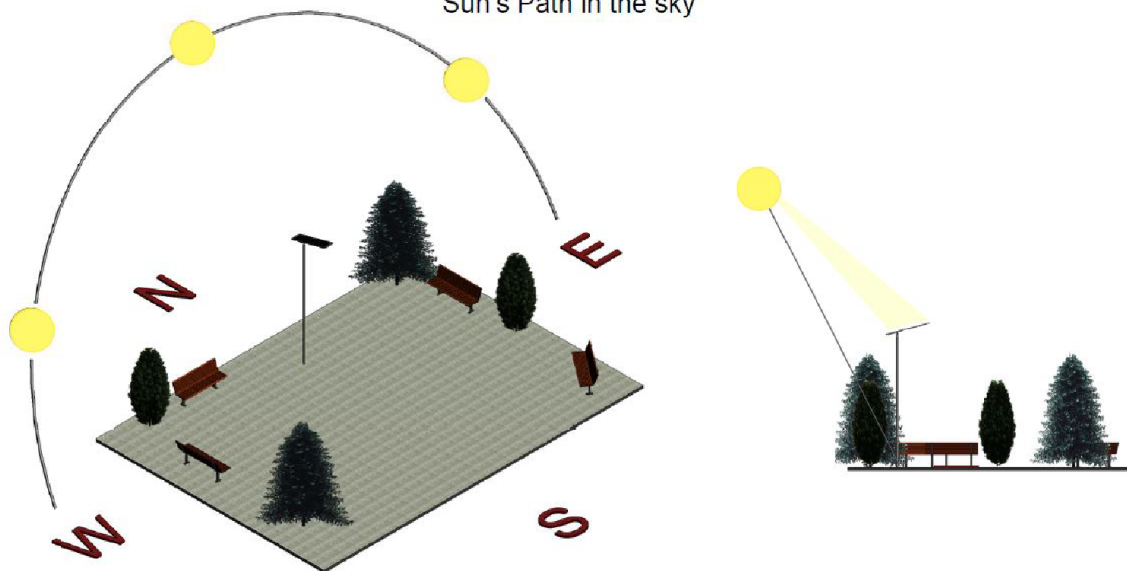
Sun's Path in the sky



These graphics illustrate Luce Solare orientation, in which the fixture can absorb the maximum solar energy from the sun (south 100% - refers to product specs).

SOUTHERN HEMISPHERE

Sun's Path in the sky



These graphics illustrate Luce Solare orientation, in which the fixture can absorb the maximum solar energy from the sun (north 100%).