



**Beghelli**  
SOLUTIONS

**NSF**<sup>®</sup>

**SOLUTIONS**



**BS100LED**

### ILLUMINA VAPOR TIGHT - 2 FT, 4FT

3,900 to 11,500 lm / 30W to 70W

UV stabilized polycarbonate construction

3000K / 3500 K / 4000K / 5000K

IP66 quick mount bracket available

Integral battery backup and control options



### ILLUMINA VAPOR TIGHT - 4 FT

5,800 to 10,350 lm / 40W to 60W

UV stabilized polycarbonate construction

3000K / 3500K / 4000K / 5000K

Multiple mounting configurations

Integral battery backup and control options



**BS101LED**

### ILLUMINA VAPOR TIGHT - 4 FT

4,774 to 7,919 lm / 35W to 55W

UV stabilized polycarbonate construction

3000K / 3500K / 4000K / 5000K

Multiple mounting configurations

Integral battery backup and control options



**BS101LED ECO**

### ILLUMINA VAPOR TIGHT - 4 FT

4,090 to 4,155 lm / 35W

UV stabilized polycarbonate construction

4000K / 5000K

Multiple mounting configurations

Economical Solution



BS101LED ECO E



FSHB

### FOOD SAFE HIGH BAY

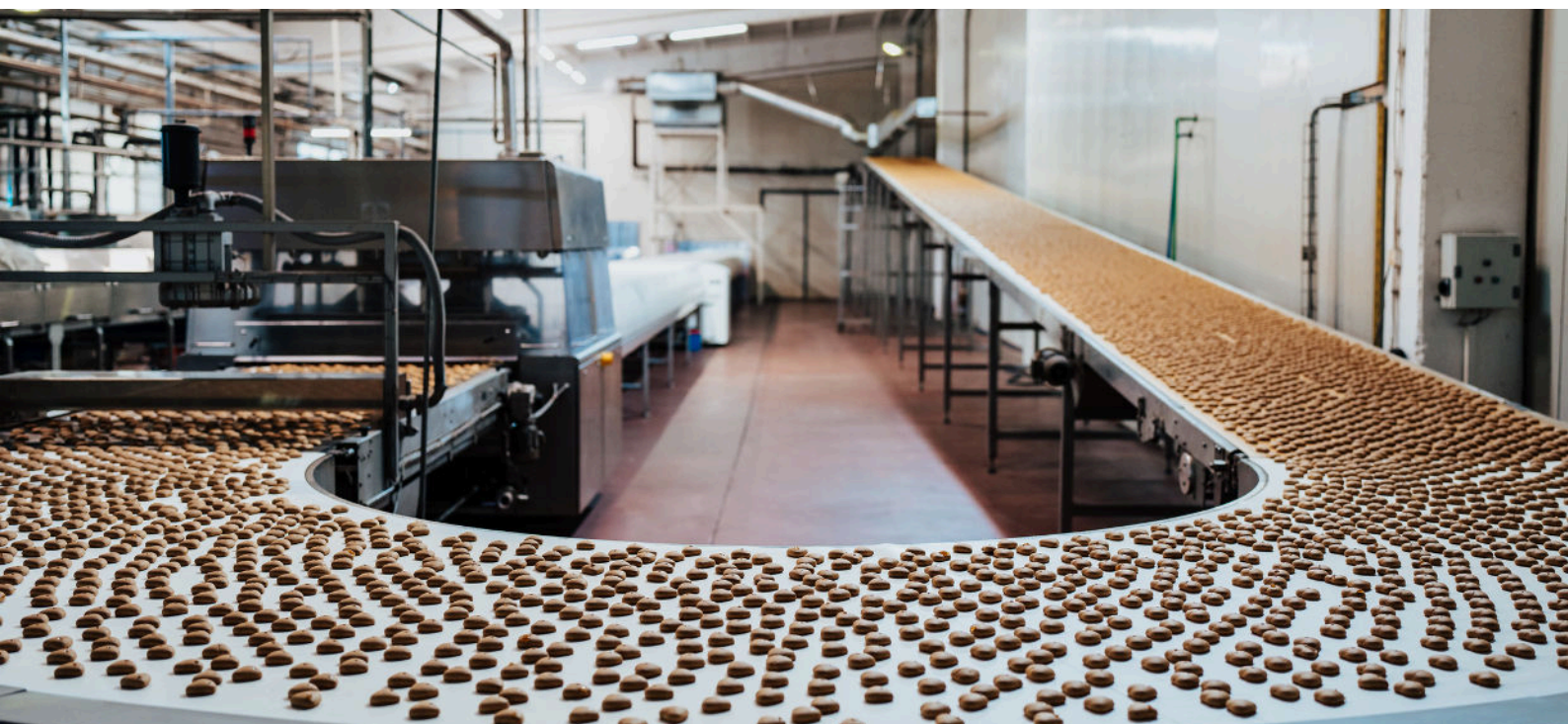
23,000 to 30,000 lm / 150W to 200W

Streamlined white housing

5000K

0-10VDC dim-to-off driver

Emergency battery backup optional



### FOOD SAFE VAPOR TIGHT - 4 FT

16,000 to 27,000 lm / 105W to 135W (selectable)

Plastic housing in pearl gray finish

3000K / 4000K / 5000K (selectable)

0-10VDC dim-to-off driver

EM battery backup + PIR occ sensor (optional)



FSVT



FORTEZZA

### VANDAL RESISTANT EXIT SIGN

Heavy duty die-cast aluminum construction

Cold location models: -40°C to 45°C

1/8" impact resistant polycarbonate cover

Slim, architectural design

Universal mounting, autotest standard





TEMPESTA LED

### WET LOCATION EMERGENCY

1990 lm in EM mode

Up to 70' on-center spacing

120 min UL924 emergency duration (NiMh)

Field-adjustable ceiling and wall mount

AC only, EM only and AC & EM models



### WET LOCATION EMERGENCY

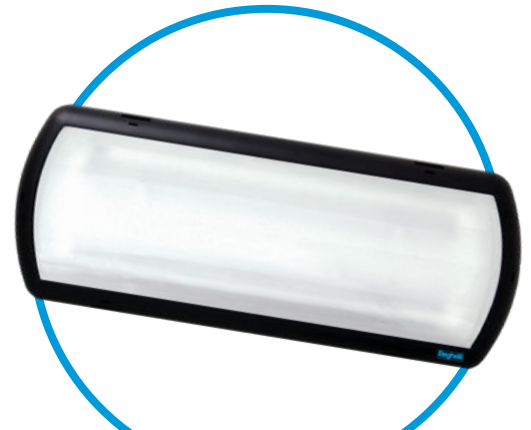
925 lm in EM mode

Up to 42' on-center spacing

90 min UL924 emergency duration (NiMh)

Field-adjustable ceiling or wall mount

AC only or AC & EM models



TEMPESTA LED ECO



TEMPESTA T20

### TITLE 20 EMERGENCY UNIT

1491 lm in EM mode

Flame & corrosion resistant polycarbonate

Up to 80' on-center spacing

Operating temperatures: HT -20°C to +40°C

SA/SE 10°C to 40°C





CASTEX 510

### HAZARDOUS VAPOR TIGHT - 2 FT, 4 FT

Class I, Division 2, Groups A, B, C and D

Durable, die-cast, copper-free aluminum housing

5000 to 12,000 lm / 40 to 80 W / 5000K standard

Operating Temperature -40 C to +60 C

Marine Grade UL 1598A



### HAZARDOUS LOW TO HIGH BAY

Class 1, Division 2

Durable copper-free aluminum housing

Operating Temp -40 C to +55 C

8,000 to 56,000 lm / 5000K

Marine Grade UL 1598A



CASTEX 300

### HAZARDOUS LINEAR

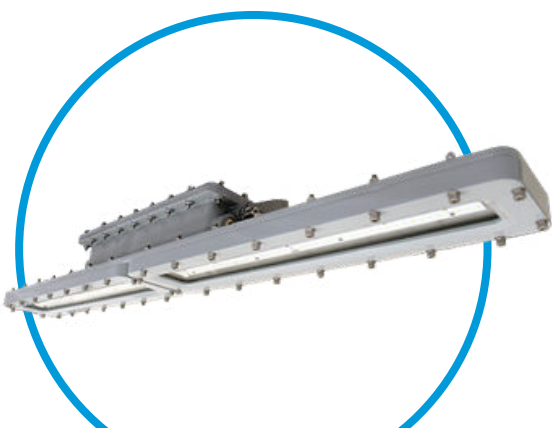
Class I, Division 1, Groups C, D

Durable copper-free aluminum housing

Operating Temp -40 C to +60 C

5,000 to 14,000 lm / 5000K

Marine Grade UL 1598A



CASTEX 600



BEGHELLI USA  
3810 Executive Way  
Miramar, FL 33025  
954.442.6600



SOLUTIONS

[www.beghelliusa.com](http://www.beghelliusa.com)