



# SCHOOL SOLUTIONS



BS100LED

ILLUMINA VAPOR TIGHT - 2 FT, 4FT

3900 to 11,500 lm / 30W to 70W

UV-stabilized polycarbonate construction

3000K / 3500K / 4000K / 5000K

IP66 quick mount bracket available

Integral battery backup and control options



BUDGET FRIENDLY LINEAR LIGHTING

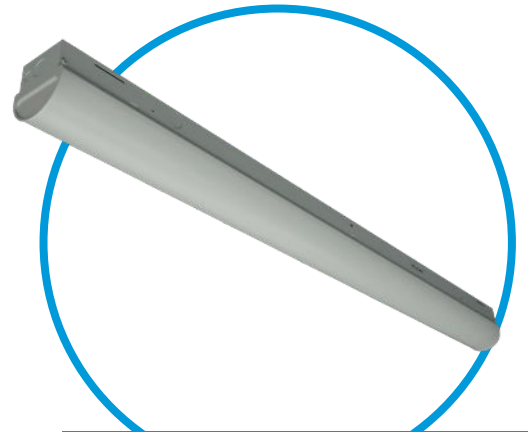
3700-5200 lm (4 ft) / 7200-10,000 lm (8 ft)

Selectable wattage (26-70W)

CCT selectable (3500K, 4000K, 5000K)

22 ga steel housing in a white finish

0-10V dimming std, wireless control option



STRIPLED SELECTABLE

STAIRWELL LIGHTING SOLUTION

Power selectable (4200 to 6500 lm / 28-46W)

CCT selectable (3500K / 4000K / 5000K)

Optional occ sensor & battery backup

DLC PREMIUM qualified for stairwells & passageways



SWL SEL (4')



### LOW PROFILE HIGH BAY

12,000 to 35,000 lm / 150W, 240W

Die-cast aluminum housing

Multiple mounting options

Egress, controls and high voltage options

Operating temperatures: HT -40°C to +45°C



**BOXLED BL736**



**NUVOLA**

### HIGH BAY LED LUMINAIRE

10,000 to 37,000 lm / 90 to 240W / 120-277V

Durable die-cast aluminum construction

90° & 120° beam distributions

Multiple mounting configurations

>80 CRI





ACCIAIO BX910LED SE

### HIGH OUTPUT EMERGENCY SOLUTION

- Emergency 1700 lm, up to 80' spacing (18' ht)
- Durable 24 gauge steel housing
- Polycarbonate diffuser std, tempered glass option
- 180-degree adjustable mount for ceiling or wall
- Nema 4X rated



### EMERGENCY LIGHTING

- Durable polycarbonate construction
- Fully enclosed heads protect positioning
- Surface wall or ceiling mount
- Up to 80 ft spacing from 932 lm (5000K CCT)
- Autotest optional



ECCO LUNA LED

### WET LOCATION EMERGENCY UNIT

- Up to 925 lm in emergency mode
- 90 minutes standard illumination (NiMh)
- Up to 42 ft on-center spacing
- EM only and AC & EM models
- Surface & ceiling mounting options



TEMPESTA LED ECO

## VANDAL RESISTANT EXIT SIGN

Heavy duty die-cast aluminum construction

Cold location models: -40°C to 45°C

1/8" impact resistant polycarbonate cover

Slim, architectural design

Universal mounting, autotest optional



## VANDAL RESISTANT COMBO UNIT

Heavy duty die-cast aluminum construction

Cold location models: -40°C to 40°C

1/8" impact resistant polycarbonate cover

Enclosed and protected MR16 LED lamps

Universal mounting, autotest optional





### UNIVERSAL EMERGENCY UNIT

- Die-cast aluminum housing (white finish std)
- Universal edge-lit panel (single, double, chevrons)
- Universal mounting: surface, recessed, end
- Custom wording available
- Nickel-cadmium battery



### VANDAL RESISTANT EXIT UNIT

- Durable 16 gauge steel housing & faceplate
- Polycarbonate shield between frame & faceplate
- Tamper resistant screws standard
- Full length canopy for ceiling or end mounting
- AC only, AC/DC & self-powered operation versions





**BEGHELLI USA**  
3810 Executive Way  
Miramar, FL 33025  
954.442.6600

[www.beghelliusa.com](http://www.beghelliusa.com)