

# CASTEX 600

## HAZARDOUS



- The **CASTEX 600** is a hazardous location LED lighting fixture rated for use in:

- Class I, Division 1, Groups C, D
- Class I, Division 2, Groups A, B, C, D
- Class II, Division 1, Groups E, F, G
- Class II, Division 2, Groups F, G
- Class III
- Class I, Zone 1, Group IIB
- Class II, Zone 21, Group IIIC
- UL1598 (Wet Location) & UL1598A (Marine)
- Temperature Code: T4

- The **CASTEX 600** comes standard in gray with a stainless steel (304) bracket and stainless steel hardware

- **HOUSING:** Die-cast, copper-free, 6mm thick ADC12 aluminum alloy body with marine grade RAL7040 powder coat finish

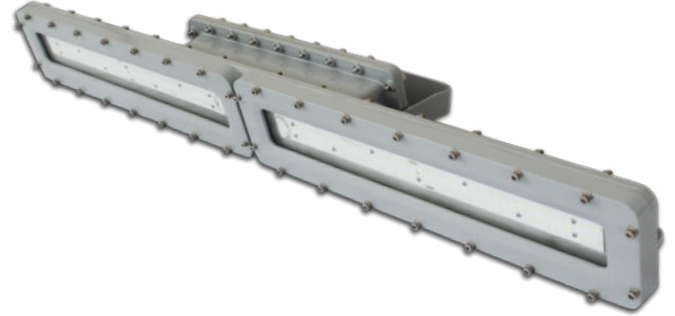
- **DIFFUSER:** Clear tempered glass cover, 120° wide beam distribution standard

- **DIMMING:** 0-10VDC dimming standard

- **COLOR TEMPERATURE:** 5000K standard

- **LUMENS:**

- VLO: 40W @ 5600 lm (EM: 15W @ 2100 lm)
- LO: 50W @ 8400 lm (EM: 15W @ 2100 lm)
- MO: 60W @ 11200 lm (EM: 15W @ 2100 lm)
- HO: 80W @ 14000 lm (EM: 15W @ 2100 lm)
- VHO: 100W @ 16800 lm (EM: 15W @ 2100 lm)



- **WEIGHT:**

- 4ft: 40.8 lbs, 2ft: 26.5 lbs

- **OPERATING TEMP:**

- HT (AC Only) -40°F to 140°F (-40°C to 60°C) up to 80W
- HT (AC Only) -40°F to 104°F (-40°C to 40°C) @ 100W
- SA (AC & EM) 32°F to 104°F (0°C to 40°C)

- **APPLICATION:** The **CASTEX 600** is designed for impact resistance and is ideal for the oil and gas industry, paint facilities, pumping stations, metal smelting, foundry and fabrication, food processing, alcohol distilling, waste water treatment plant, paper mills and other high corrosion, high humidity, high vapor, high dust and high temperature locations.

## ORDERING INFORMATION

Example: HZCAS600 4HT HO DIM WT50 120-277V

MODEL	LENGTH	OPERATION	OUTPUT	DIMMING	COLOR TEMP	INPUT	OPTIONS
HZCAS600	2' (ft)	HT (AC only)	VLO <sup>4</sup>	DIM (0-10V dimming)	WT40 <sup>4</sup> (4000K)	120-277V	BAA (Buy American Act)
	4' (ft)	SA <sup>3</sup> (AC & EM)	LO		WT50 <sup>4</sup> (5000K)	HV <sup>5</sup>	<b>ACCESSORIES</b>
			MO <sup>4</sup>				HZCH39 <sup>6,7</sup> (single 39" chain)
			HO <sup>4</sup>				HZJBOX (J-box)
			VHO				HZPK12 (12" pendant stem)

NOTE 1: 2' available in 40W (VLO) and 50W (LO)

NOTE 2: 4' available in 40W (VLO), 60W (MO), 80W (HO) & 100W (VHO)

NOTE 3: Contact factory for lead time

NOTE 4: 4000K is available in VLO, MO & HO (other color temperatures available, 2200K to 7000K, contact factory for lead time)

NOTE 5: High voltage option available (200 to 480V), contact factory for lead time

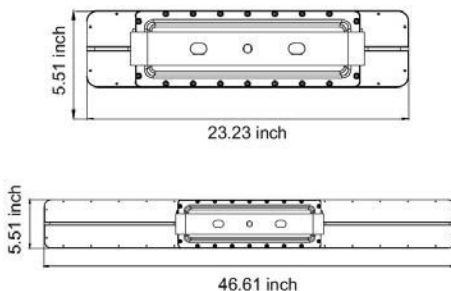
NOTE 6: Single 39" (1 m) chain (field cuttable) with 2 carabiner clips

NOTE 7: 2 chain hang kits are recommended if length > 18" is required

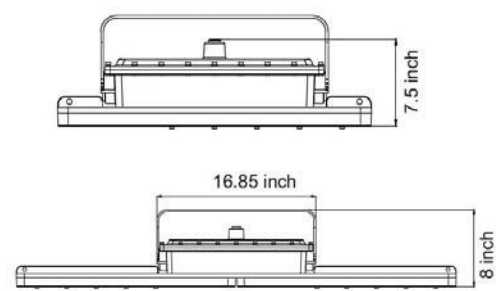
NOTE: Surface ceiling/ wall mount is standard

## DIMENSIONS

2FT

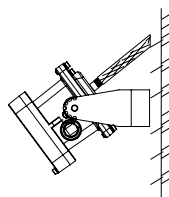
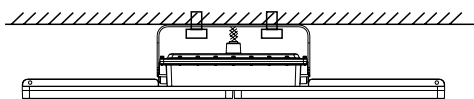


4FT

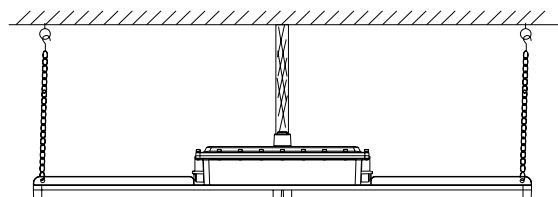


## MOUNTING OPTIONS

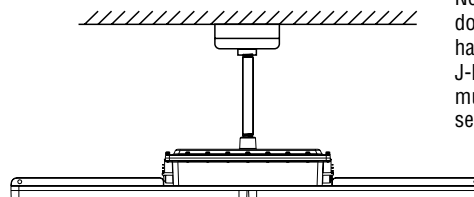
**Standard**  
(surface/ceiling mount bracket)



**Suspension Mount**  
(HZCH39)



**Pendant Mount**  
(HZPK12)



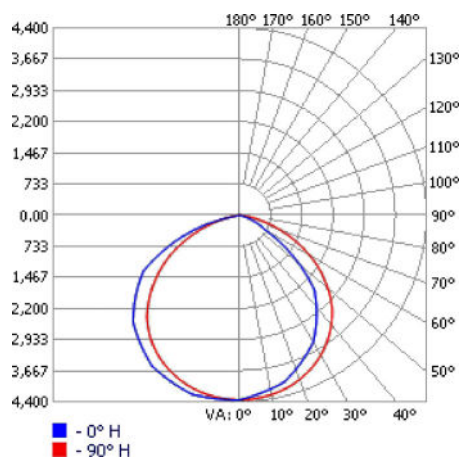
Note: HZPK12 does not include hazardous rated J-box. HZJBOX must be ordered separately.

NOTE: Power cord cannot be exposed. Hazardous conduit or hazardous J-box mounting required.

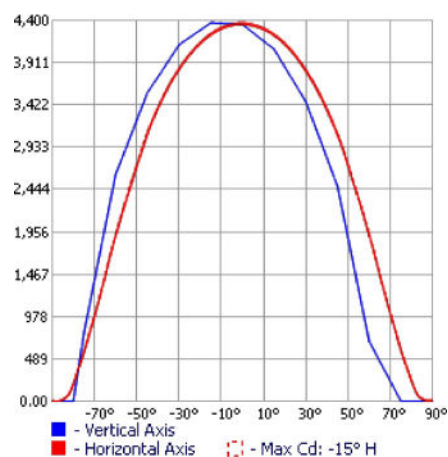
## PHOTOMETRICS

**HZCAS600HT VH0 WT50 120-277V**

**POLAR CURVES**



**ISOLINES**



# CASTEX 600

## ENERGY CHART

MODEL (5000K CCT)	EFFICACY	CONSUMPTION WATTAGE	LUMEN OUTPUT	CRI	L70 (HRS) @ 55°C
4FT					
HZCAS600 4HT VLO	140 LPW	40W	5600 lm	>70	>150,000
HZCAS600 4HT M0	140 LPW	60W	11200 lm	>70	>150,000
HZCAS600 4HT H0	140 LPW	80W	14000 lm	>70	>150,000
HZCAS600 4HT VHO	140 LPW	100W	16800 lm	>70	>150,000

## ELECTRICAL RATING

PRODUCT	NOMINAL POWER (W)	AC CURRENT (A) AC VOLTAGE		FREQUENCY (HZ)	DC VOLTAGE (V)	DC CURRENT (MA)
		120 V	277 V			
4FT						
HZCAS600 4HT VLO	40W	0.34	0.15	50/60	48	835
HZCAS600 4HT M0	60W	0.51	0.22	50/60	48	835
HZCAS600 4HT H0	80W	0.68	0.29	50/60	48	1670
HZCAS600 4HT VHO	100W	0.85	0.37	50/60	48	2960

■ **WARRANTY:** 5 years, see website for full warranty details