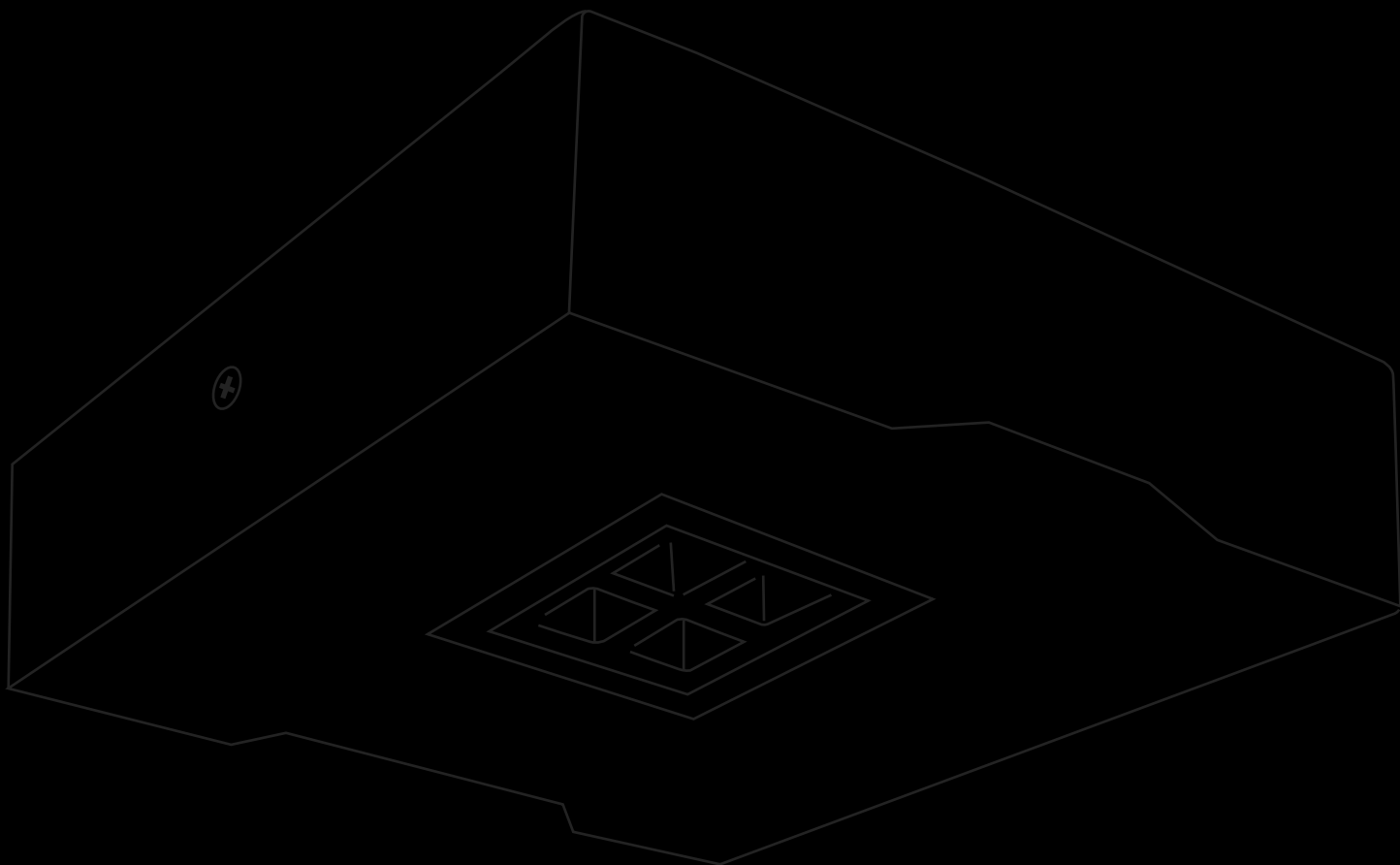


APPLICATION GUIDE 2025

We've got a solution for you!



Beghelli



WHO WE ARE

Founded in 1989, Beghelli USA is a leading provider of emergency and industrial lighting solutions. Headquartered in Miramar, Florida, we operate at the specification level with a project-based approach partnering with engineers, architects, designers, and property managers to deliver light systems that are fast, flexible, and built to perform.

Our products include life safety and innovative industrial lighting solutions. Being environmentally conscious, Beghelli offers solar and turtle-friendly technologies.

THE BEGHELLI DIFFERENCE

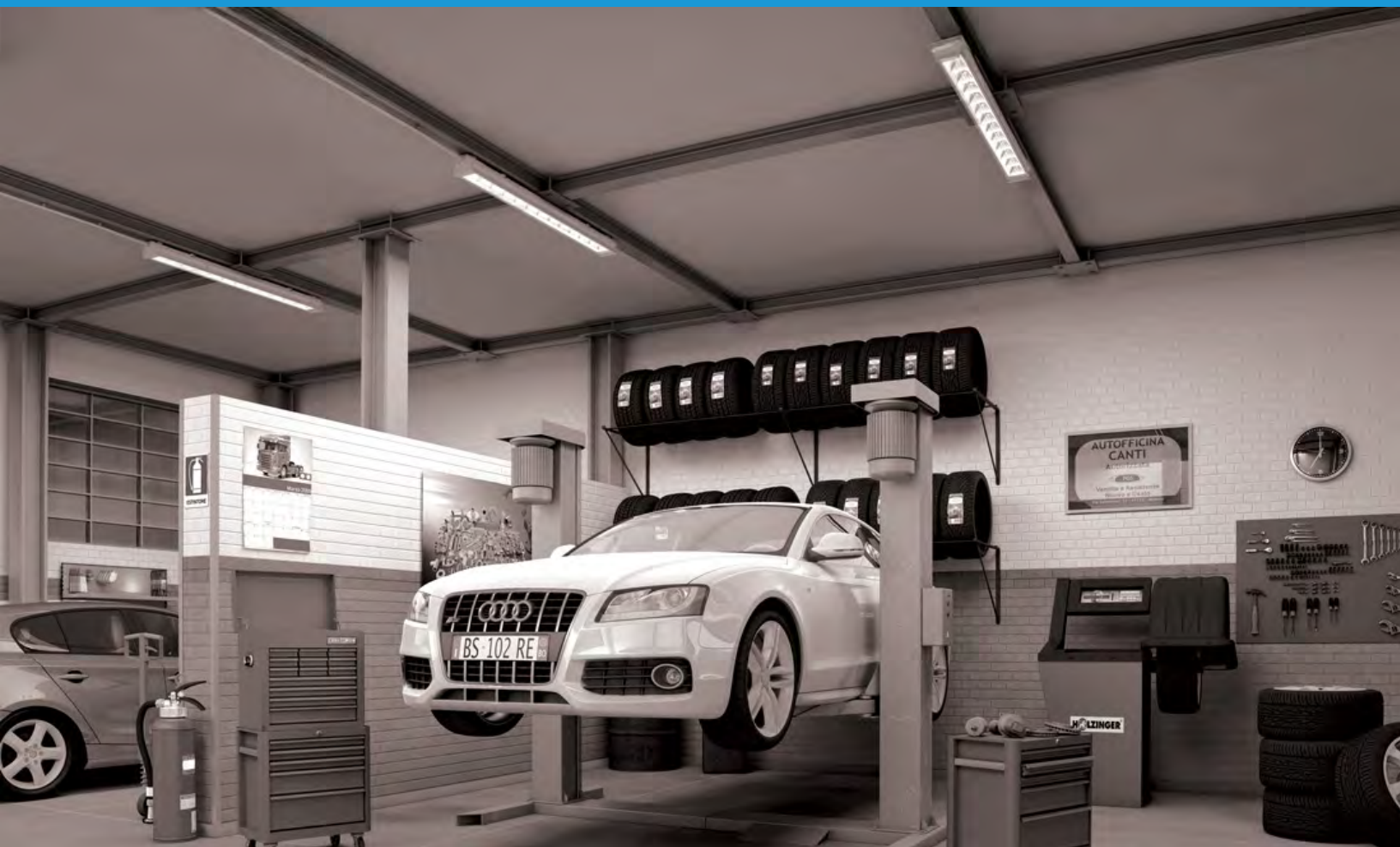
What sets us apart? A commitment to innovation, research, communication and service. Backed by a nationwide network of agents, Beghelli offers cutting-edge products and industry leading support making Beghelli your reliable partner. Most importantly, our team brings unmatched passion and expertise to every project.

OUR VISION

We're here to create a better everyday life through:

- People who inspire
- Products that enhance
- Motion that never ceases

Blending Italian design with American tradition, Beghelli USA is redefining lighting - one solution at a time.



SPECIAL FEATURE ICON GUIDE

Look for these icons as they apply to specific products.

	3G Vibration Rated	Can withstand fundamental resonant frequency vibrations for 100,000 cycles on each plane (x, y, z). Based on ANSI C136.31 specs.
	Meets Buy American Act	Made in America.
	Suitable for Cold Locations	Works in cold temperatures down to -40°C/F.
	Suitable for Damp Locations	Locations protected from weather and not subject to saturation with water or other liquids but subject to moderate degrees of moisture.
	Design Light Consortium Listed Product	Meets DLC's rigorous energy and quality requirements for utility rebates.
	Suitable for Hazardous Locations	The National Electrical Code (NEC) defines hazardous locations as those areas "where fire or explosion hazards may exist due to flammable gases or vapors, flammable liquids, combustible dust, or ignitable fibers or flyings."
	IK Code for Impact Resistance	Rated for impact resistance. Scales 01-10, with 10 being the most resistant.
	Impact & Vandal Resistant	Designed to withstand impacts and attempts at tampering.
	Ingress Protection Code	As defined in the International Electrotechnical Commission (IEC) 60529. The first digit relates to solid particle protection, and the second digit to liquid ingress protection.
	NSF Certified	Meets strict safety and sanitation standards, ideal for food processing, cleanrooms, and washdown environments.
	NEMA 4X	The National Electrical Manufacturers Association's (NEMA) specifications for electrical products with a water and dust-resistant gasket.
	Remote Capable	Capable of installing remote lamp heads onto product.
	Restriction of Hazardous Substances	Complies with the Restriction of Hazardous Substances act.
	NSF Sanitation Compliant	Complies with the specifications for NSF/ANSI sanitation codes for food storage and preparation.
	Title 20 Listed	California product specs for energy efficiency.
	Title 24 Listed	California building standards code for "energy conservation, green design, construction and maintenance, fire and life safety, and accessibility".
	ADA Compliant	Meets accessibility standards for safe and unobtrusive use by people with disabilities.
	Suitable for Wet Locations	A location in which water or other liquid can drip, splash, or flow on or against electrical equipment.
	Wildlife Lighting Certification	Rated as appropriate illumination for not disturbing wildlife by the Florida Fish and Wildlife Conservation Commission.

Beghelli products are certified by CSA, UL and ETL laboratories.



TABLE OF CONTENTS



INDUSTRIAL

05

- 06 FOOD PROCESSING
- 07 REFRIGERATION
- 08 PARKING DECKS
- 09 WAREHOUSE
- 10 HAZARDOUS



COMMERCIAL

12

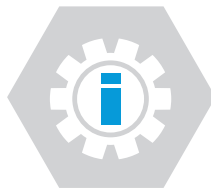
- 13 OFFICES
- 14 RETAIL
- 16 HOSPITALITY
- 18 EDUCATION
- 20 STORAGE
- 21 NON-BUGEYE



EXTERIOR

22

- 23 PATHWAY & SITE SIGNAGE



INDUSTRIAL





LIGHTING NEEDS:

- NSF or equivalent certification is required
- Wash down environments are common
- Durable, chemical-resistant construction



QUESTIONS YOU SHOULD ASK:

- Does the luminaire have the required certifications for the environment?
- Will the luminaires be hosed down? If "yes" with what PSI?
- Are any controls / sensors needed in this environment?



FOOD PROCESSING

Food processing facilities have a very specific set of demands. Due to the variety of spaces, different types of lighting solutions need to be applied accordingly. Cold storage, splash zones or warehouse spaces should be fitted with a product that meets their safety, durability, and lighting needs.

These areas may consist of:

- Smoke
- Oil
- Dust
- Streaming water
- Pressurized wash downs
- Cleaning or chemical solutions
- Extreme temperatures

FSVT

TITLE 24

TITLE 20



- Food safe vapor tight high bay
- Selectable CCT and lumens (16,000 to 27,000 lm)
- 150 to 178 LPW efficacy
- 0-10VDC dimming, 120-277VAC



TEMPESTA® LED

TITLE 24

TITLE 20



- Up to 70 ft spacing on-center
- HT/SA: 15W @ 1900 lm (4000K CCT)
- SE: 10W @ 1350 lm (4000K CCT)
- Autotest and 120-347VAC input standard



FSHB

TITLE 20

TITLE 20



- Corrosion-resistant, smooth white housing
- 150W @ 23,000 lm; 200W @ 30,000 lm
- 0-10VDC dimming, 120-277VAC
- High efficacy: 150 LPW



FORTEZZA + Plus

TITLE 20



- Heavy-duty die-cast aluminum construction
- Impact-resistant polycarbonate cover
- Architectural high-abuse sign
- Universal mounting: ceiling, wall, end



BS100LED (2', 4')

TITLE 24

TITLE 20



- 100% polycarbonate construction
- 3900 to 11,500 lm / 30W to 70W
- L70 > 60,000 hrs
- Multiple mounting configurations



BOLLA WP



- Heavy-duty LED emergency unit
- Die-cast aluminum construction
- Impact-resistant polycarbonate cover
- Compact surface or ceiling mount design





REFRIGERATION | INDUSTRIAL



LIGHTING NEEDS:

- Cold temperature operation is required
- On/off sensors often used
- Wash down environments are common



QUESTIONS YOU SHOULD ASK:

- What is the minimum operating temperature of the luminaire?
- Does the luminaire have the appropriate ratings for this environment?
- Is emergency operation needed?

BS101LED (4')



- UV-stabilized polycarbonate housing & diffuser
- 5800 to 10,350 lm / 40W to 60W
- Corrosion, flame & vandal resistant
- Multiple mounting configurations



TESTA



- Die-cast aluminum construction
- High output 2578 lm
- Impact-resistant acrylic lens
- Stainless steel swivel for precise aiming



BOXLED® BL736



- Die-cast aluminum housing
- 12,000 to 35,000 lm / 150W, 240W
- Multiple mounting options
- Egress, controls and high voltage options



WLX



- Internal heater option operates to -20°C
- Polycarbonate lens and fiberglass housing
- Hot-bonded liquid gasket for maximum seal
- Combo and custom wording available



FORTEZZA® EXIT



- Heavy-duty, die-cast aluminum construction
- Universal mounting
- 1/8" Impact-resistant polycarbonate shield
- Internal heater option operates to -20°C



EDT



- Durable, fully gasketed, fiberglass cabinet
- Die-cast aluminum heads
- -20°C to +40°C operation with heater option
- 6 / 12 / 24V Models up to 360W capacity



MURO



- Low-profile emergency LED wallpack
- Photocontrol with optional PIR sensor
- Up to 60 ft on-center spacing
- Operating temp -25°C to +50°C



BRAVADO UNIT (BRV)



- Heavy-duty die-cast aluminum construction
- Up to 70 ft on-center spacing
- Designed for wall or ceiling installation
- -20°C operation with internal heater option



INDUSTRIAL | PARKING DECKS



LIGHTING NEEDS:

- Reducing maintenance time is important
- Proper lighting when occupied is required
- Wet location luminaires are ideal for parking decks



QUESTIONS YOU SHOULD ASK:

- Will this area require hose down cleaning?
- Should I use sensors in a parking deck?
- What mounting options do I have that can optimize performance?

BS100LED PG (2', 4')



- UV-stabilized polycarbonate lens and housing
- 3400 to 9800 lm / 30W to 70W
- Integral emergency and occ sensor available
- Multiple mounting configurations



FORTEZZA COMBO



- Heavy-duty die-cast aluminum construction
- Wall, ceiling or end mounting
- Impact-resistant polycarbonate cover
- Enclosed & protected MR16 lamps



BS400 LED



- Low profile, durable die-cast housing
- 3500 to 7200 lm / 30, 45, 60W
- UV stabilized, low glare frosted lens
- Easy installation in multiple mounting configurations



PACO AQUA EXIT



- High impact, thermoplastic housing
- Corrosion and UV-resistant polycarbonate shield
- Universal mounting and removable chevrons
- 3W Remote capable UL924 wet location exit



BS400 LED PLUS



- Heavy-duty die-cast aluminum housing
- 10,110 to 13,077 lm / 80 & 100 W
- Frosted UV-stabilized polycarbonate diffuser
- Energy-saving, high bay solution



TEMPESTA® LED



- Up to 70 ft spacing on-center
- HT/SA: 15W @1900 lm (4000K CCT)
- SE: 10W @ 1350 lm (4000K CCT)
- Autotest and 120-347VAC input standard



BBX WET



- LED lamp heads deliver up to 118' spacing
- High impact, UV stabilized thermoplastic housing
- 220 to 1450 lm, autotest standard
- Options: cold location and high output



PLURALUCE® WP UNIT



- Compact (7" sq), durable aluminum construction
- Emergency option achieves up to 60 ft spacing
- 4000K LEDs deliver 1349-1414 lm
- Symmetric & asymmetric optics included





WAREHOUSE | INDUSTRIAL



LIGHTING NEEDS:

- Occupancy sensors to lower energy costs
- Long lamp life to reduce maintenance



QUESTIONS YOU SHOULD ASK:

- What is the rated lamp life?
- Are sensors available and easily adjusted?
- Are multiple distribution patterns available?

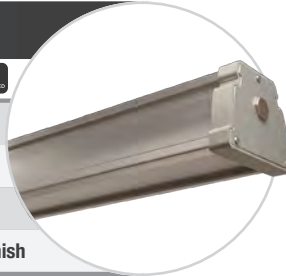
ACCIAIO® BX965LED

TITLE 24

TITLE 20



- High temp operation up to 65°C
- 30/ 50W, 4000/ 6700 lm
- Multiple mounting options
- Rugged extruded alum housing in clear anodized finish



ACCIAIO® BX910LED SE (2')

TITLE 20



- Emergency 1700 lm, up to 80' spacing (18' ht)
- Durable 24 gauge steel housing
- Polycarbonate diffuser std, tempered glass option
- 180-degree adjustable mount for ceiling or wall



BS101LED ECO

TITLE 24

TITLE 20



- UV-stabilized polycarbonate construction
- 4744 to 7919 lm / 35W & 55W
- Occ sensor and integral emergency options
- Multiple mounting configurations



ECCO LUNA LED



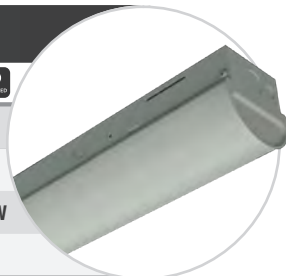
- Durable polycarbonate construction
- Fully-enclosed heads protect positioning
- Surface wall or ceiling mount
- Up to 80 ft spacing from 932 lm (5000K CCT)



STRIPLED SELECTABLE (4', 8')



- Selectable CCTs: 3500K, 4000K & 5000K
- 22 ga steel housing with a white paint finish
- 3700-5200 lm (4 ft) / 7200-10,000 lm (8 ft) / 26-70W
- 0-10V dimming std, wireless control option



FORMA (FME)



TITLE 20



- Durable, die-cast construction
- Universal mounting
- Low-profile with a brushed aluminum face
- Many options including special wording



VALORE (2', 4')



- Field adjustable CCT: 3000/ 4000/ 5000K
- 12,500 to 45,700 lm / 100W to 325W
- Wireless lighting control, 0-10V dimming
- Emergency and occ sensor options available



TEMPESTA® T20 (TA PLUS)

TITLE 20



- Up to 70 ft spacing on-center
- Up to 1490 lm in emergency
- Up to 2290 lm in AC mode (4000K CCT)
- Options: black housing, autotest



INDUSTRIAL | HAZARDOUS AREAS



LIGHTING NEEDS:

- Know the exact type of environment the products are going into
- Special classifications may be required
- Expect longer delivery times for hazardous rated products



QUESTIONS YOU SHOULD ASK:

- Does the product have the correct certifications for this application?
- What is the products warranty?
- Is the product maintenance friendly?

CASTEX™ 300



- Class 1, Division 2, Groups A, B, C, D
- Operating temp -40°C to +55°C
- 8000 to 56,000 lm (5000K CCT)
- Marine Grade UL 1598A



CASTEX™ 310



- Class 1, Division 1, Groups C, D
- Operating temp -40°C to +60°C
- 8000 to 35,000 lm (5000K CCT)
- Marine Grade UL 1598A



CASTEX™ 320



- Class I, Division 1, Groups C, D
- Operating temp -40°C to +55°C
- 8400 - 21,000 lm (5000K CCT)
- Marine Grade UL 1598A



CASTEX™ 350



- Class I, Division 2, Groups A, B, C, D
- Operating temp 0°C to +55°C
- 8400 to 56,000 lm (5000K CCT)
- Marine Grade UL 1598A



CASTEX™ 400 (2', 4')



- Class I, Division 2, Groups A, B, C, D
- Operating temp -40°C to +50°C
- 4400 to 8300 lm with EM option (5000K CCT)
- Marine Grade UL 1598 & 1598A



CASTEX™ 510 (2', 4')



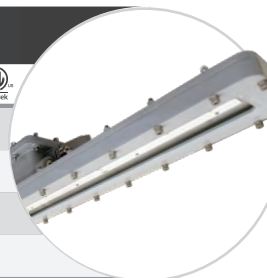
- Class I, Division 2, Groups A, B, C, D
- Operating temp -40°C to +60°C
- 5000 - 11,200 lm (5000K CCT)
- Marine Grade UL 1598A



CASTEX™ 600



- Class I, Division 1, Groups C, D
- Operating temp -40°C to +60°C
- 5000 - 16,800 lm with EM option (5000K CCT)
- Marine Grade UL 1598A





HAZARDOUS AREAS | INDUSTRIAL

CASTEX™ 700



- Class I, Division 1, Groups B, C, D
- Operating temp -40°C to +60°C
- Die-cast copper-free aluminum housing
- UL 844 and UL 924 Listed

CASTEX™ 800



- Class I, Division 2, Groups A, B, C, D
- Operating temp -20°C to +50°C
- Fiberglass reinforced polycarbonate housing
- Options: autotest, internal heater

PLURALUCE® HZ



- Class I, Division 2, Groups A, B, C, D
- Compact modern die-cast design, gray std
- Symmetrical & asymmetrical optics included
- 4000K LEDs deliver 1349 to 1414 lm & up to 60' spacing

ROBUSTO® COMBO



- Class I, Division 2, Groups A, B, C, D
- Durable fiberglass construction
- Simple face, wall mount, universal chevrons
- Many options including custom wording are available

BRAVADO® HAZARDOUS (BRVHZ)



- Class I, Division 1/ Class II, Division 1 & 2
- Compact, low profile aesthetic
- Heavy-duty die-cast aluminum construction
- Vandal-resistant polycarbonate lens

HDZE EM UNIT



- Class I, Division 1, Groups C, D
- Die-cast aluminum housing with SS hardware
- 0°C to 45°C (charging), -20°C to 60°C (discharging)
- Nominal 738 lm @ 8W (3 hrs EM)

HDZX EXIT



- Class I, Division 1, Groups C, D
- Die-cast aluminum housing with SS hardware
- Tempered glass panel (red or green LEDs)
- 120 to 277V, 50 to 60 Hz

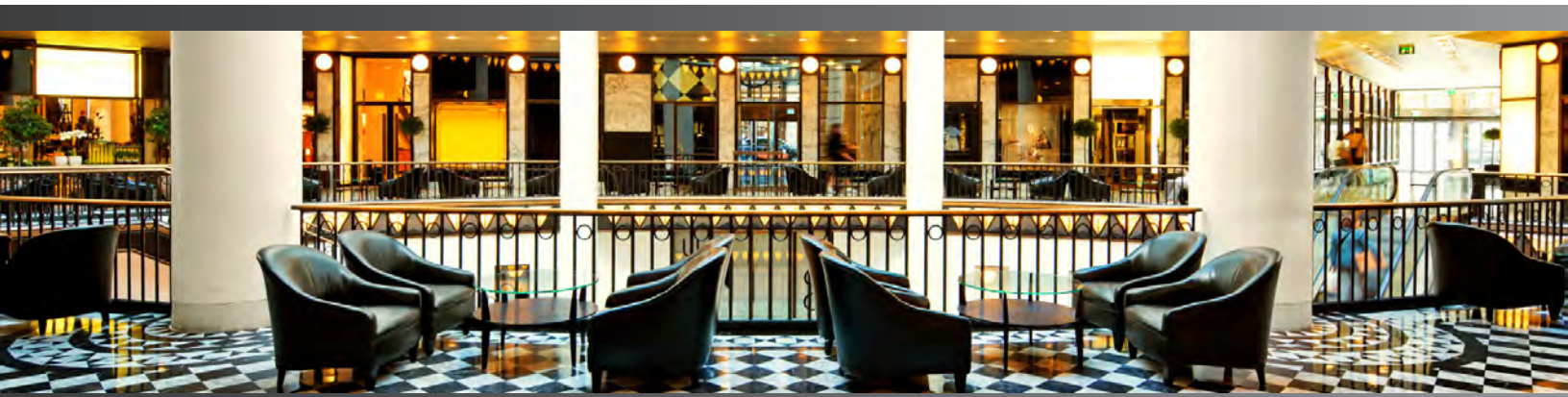
HDZC COMBO



- Class I, Division 1, Groups C, D
- Die-cast aluminum housing with SS hardware
- Nominal 738 lm EM lighting @ 8W
- 3 to 5W exit sign power consumption



COMMERCIAL





OFFICES | COMMERCIAL



LIGHTING NEEDS:

- You must know occupancy time of day and duration
- Understand the lighting code requirements
- Energy savings in office environments is critical



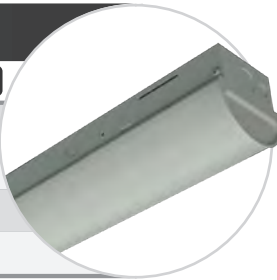
QUESTIONS YOU SHOULD ASK:

- How many hours a day is the office occupied?
- Are there areas that are often unused or used only when scheduled?
- Who handles the maintenance in the office?

STRIPLED SELECTABLE (4', 8')



- Selectable wattage & CCT (3500K/ 4000K/ 5000K)
- 3700-5200 lm (4 ft) / 7200-10,000 lm (8 ft) / 26-70W
- 22 ga steel housing in a white finish
- 0-10V dimming std, wireless control option



CURVA COMBO



- Architectural edge-lit exit combo solutions
- Surface or recessed mount
- Autotest standard, 3W remote option
- Adjustable recessed LED lamps deliver up to 66' spacing



NOVA SERIES



- 800W to 17KW inverters
- True sine wave power
- Input and output voltage options
- Durable steel housing



PLURALUCE® RECESSED



- Low profile trim for seamless fit in ceiling
- LEDs deliver 1349 to 1414 lm (4000K CCT)
- Autotest standard, 3W remote option
- Adjustable recessed LED lamps deliver up to 60' spacing



VESTA PRO MAX



- Mid-size inverter supports loads of 750-1150W
- Pure sine wave output - compatible w/ all drivers
- 90 minute runtime at 100% light output
- Mounts up to 1000 ft from controlled fixtures



PLURALUCE® INDOOR



- Compact, architectural aluminum housing
- LEDs deliver 782 to 845 lm (4000K CCT)
- Up to 60' on-center spacing in emergency operation
- Symmetrical & asymmetrical optics included



BBX



- Adjustable LED heads deliver up to 132' spacing
- Remote capable & autotest options
- Maintenance-free LiFePO4 battery
- Wall, pendant, I-beam and ceiling mount



OL2



- Architectural edge-lit with white steel trimplate
- Surface, recessed and end mount available
- Clear, mirror or white panels with selectable chevrons
- Many options available





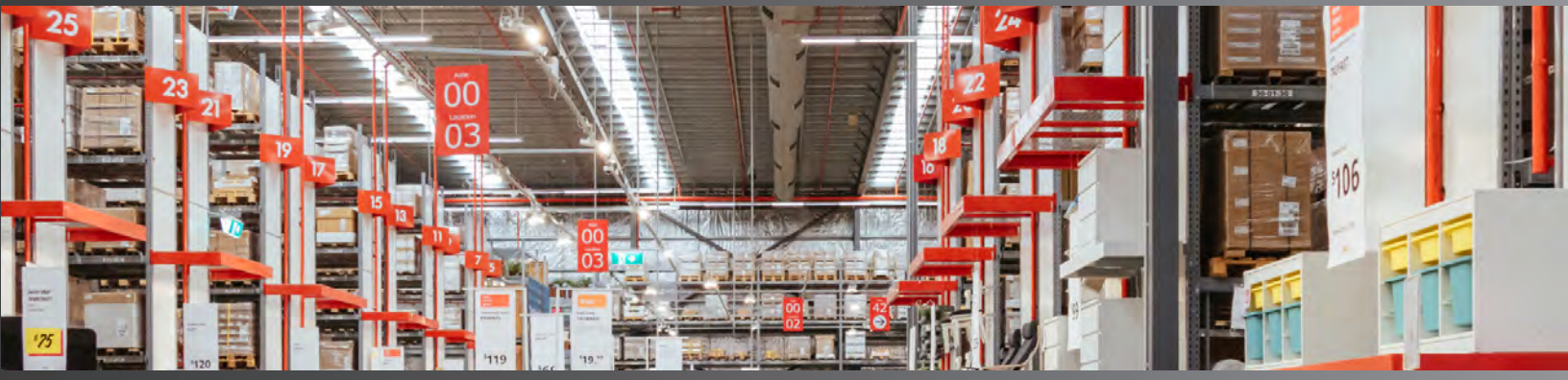
LIGHTING NEEDS:

- Know what light levels you need
- Understand the hours of operations required
- Aesthetics play a major role in the lighting design



QUESTIONS YOU SHOULD ASK:

- Does my luminaire meet the light level requirements?
- Is maintenance ease an important factor?
- Does this application require a specific CRI?



BS101LED ECO



- UV-stabilized polycarbonate construction
- 4744 to 7919 lm / 35W & 55W
- Occ sensor and integral emergency options
- Multiple mounting configurations



DRAGO 2 (DRC)



- Outputs from 3700 to 14,200 lm
- Acrylic & aluminum reflectors (12 & 16")
- Integral emergency option
- 120-277V, 0-10V dimming down to 5%



BS101LED ECO E



- 100% UV-stabilized polycarbonate construction
- Up to 4156 lm, 4000K/ 5000K
- Multiple mounting configurations
- IP66 Quick Mount Bracket option



STRIPLED SELECTABLE (4', 8')



- Selectable wattage & CCT (3500K/ 4000K/ 5000K)
- 3700-5200 lm (4 ft) / 7200-10,000 lm (8 ft) / 26-70W
- 22 ga steel housing in a white finish
- 0-10V dimming std, wireless control option





RETAIL | COMMERCIAL



LIGHTING NEEDS:

- Proper light levels are important in specific areas
- Energy savings and product life
- Ease of maintenance is important



QUESTIONS YOU SHOULD ASK:

- What is the expected product life?
- How does the product mount / install?
- What energy savings features are offered?

BBX



TITLE 20



- Adjustable LED heads deliver up to 125' spacing
- Remote capable & autotest options
- Maintenance-free LiFePO4 battery
- Wall, pendant, I-beam and ceiling mount



PACO PEH T20



TITLE 20



- Fully adjustable 1.7W LED heads
- Options: Autotest and 2.3W remote capability
- Surface wall or ceiling installation
- High-impact, UV stabilized thermoplastic housing



BRUNO



TITLE 20



- Die-cast aluminum housing (white finish std)
- Universal edge-lit panel (single, double, chevrons)
- Universal mounting: surface, recessed, end
- Options including custom wording available



PLURALUCE® SQUARE RECESSED



- Clean modern look with seamless trim
- LEDs deliver 1349 to 1414 lm (4000K CCT)
- Up to 60 ft on-center spacing
- Symmetrical and asymmetrical optics included



CURVA 2



- Single SKU: Field selectable red/green LED, single & double panels, universal surface mounting
- Pivoting design for ease of installation
- Autotest standard (SA models)



PLURALUCE® INDOOR



- Compact, architectural aluminum housing
- LEDs deliver 782 to 845 lm (4000K CCT)
- Up to 60' on-center spacing in emergency operation
- Symmetrical & asymmetrical optics included

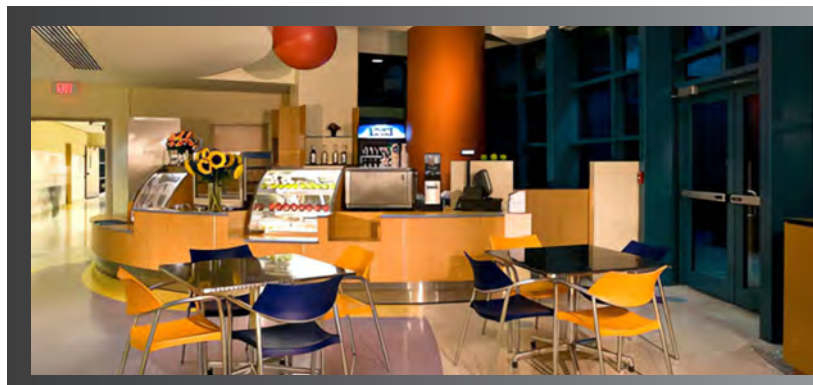


TEMPESTA® LED

TITLE 24



- Up to 70 ft spacing on-center
- HT/SA: 15W @ 1900 lm (4000K CCT)
- SE: 10W @ 1350 lm (4000K CCT)
- Autotest and 120-347VAC input standard





LIGHTING NEEDS:

- Proper light levels are important in specific areas
- Energy savings and product life
- Ease of maintenance is important



QUESTIONS YOU SHOULD ASK:

- What is the expected product life?
- How does the product mount / install?
- What energy savings features are offered?



HOSPITALITY NEEDS

- Visually appealing
- Easy installation
- Low maintenance
- Longevity
- Mounting options



BOXLED® BL736

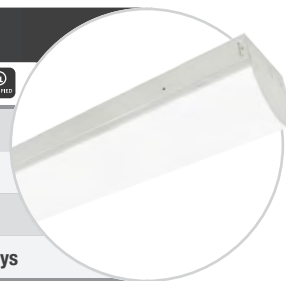
TITLE 24

TITLE 20



- Die-cast aluminum housing
- 12,000 to 35,000 lm / 150W, 240W
- Multiple mounting options
- Egress, controls and high voltage options

SWL SEL (4')

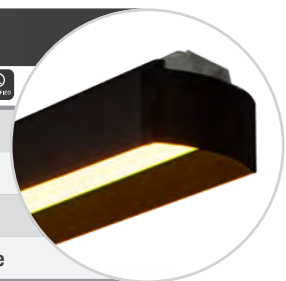


- CCT selectable (3500K/ 4000K/ 5000K)
- Power selectable (4200 to 6500 lm/ 28-46W)
- Optional occ sensor & battery backup
- DLC PREMIUM qualified for stairwells & passageways

TURTLE LED (2', 4')

TITLE 24

TITLE 20



- Fully shielded polycarbonate construction
- FWC approved, amber LED 590 nm
- Turtle-friendly lighting ideal for all coastal areas
- Emergency and multiple mounting options available



CURVA 2



- Single SKU: Field selectable red/green LED, single & double panels, universal surface mounting
- Pivoting design for ease of installation
- Autotest standard (SA models)



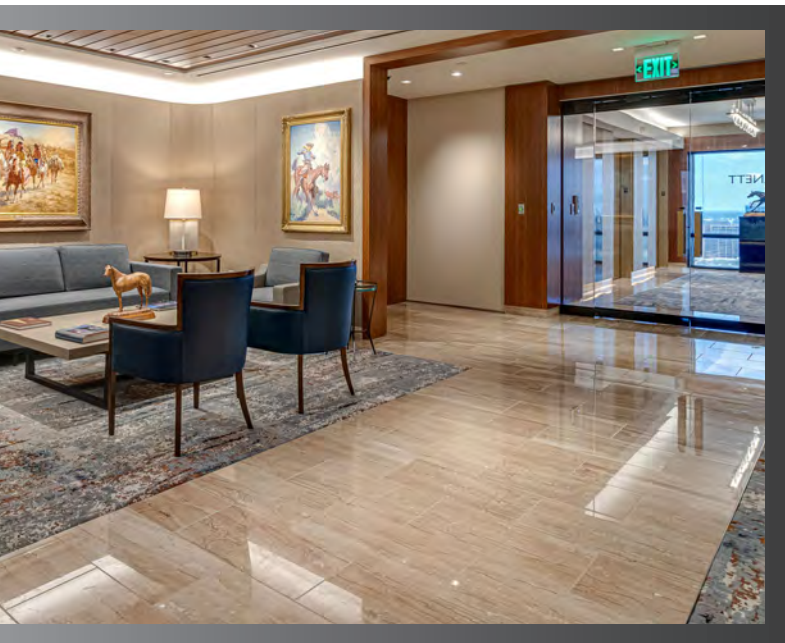
CURVA COMBO



TITLE 20



- Architectural edge-lit exit combo solution
- Surface or recessed mount
- Autotest standard, 3W remote option
- Adjustable recessed LED lamps deliver up to 66' spacing



OL2 + Plus



TITLE 20



- Architectural edge-lit exit w/ thin-die cast trimplate
- Designed for surface, recessed and end mount
- Panels with rounded corners & selectable chevrons
- Many options including custom wording available



TEMPESTA® LED

TITLE 24



- Up to 70 ft spacing on-center
- HT/SA: 15W @ 1900 lm (4000K CCT)
- SE: 10W @ 1350 lm (4000K CCT)
- Autotest and 120-347VAC input standard





LIGHTING NEEDS:

- Durability is critical in school environments
- Light level requirements must be reached
- Ease of maintenance is very important



QUESTIONS YOU SHOULD ASK:

- Is the product vandal resistant?
- How does the product mount / install?
- What energy savings features are offered?

BS100LED (2', 4')



- 100% polycarbonate construction
- 3900 to 11500 lm / 30W to 70W
- L70 > 60,000 hrs
- Multiple mounting configurations



STRIPLED SELECTABLE (4', 8')



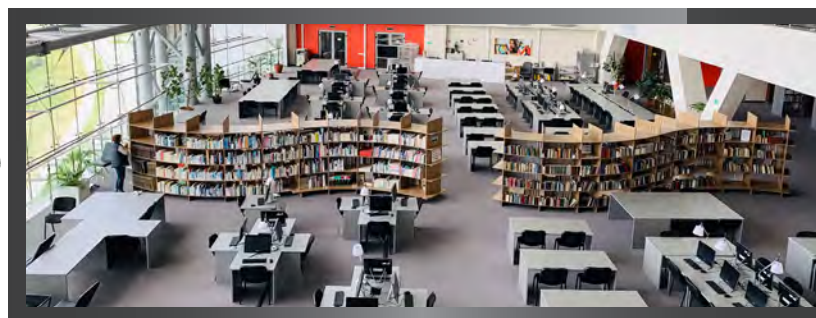
- Selectable wattage & CCT (3500K, 4000K & 5000K)
- 3700-5200 lm (4 ft) / 7200-10,000 lm (8 ft) / 26-70W
- 22 ga steel housing in a white finish
- 0-10V dimming std, wireless control option



BOXLED® BL736



- Die-cast aluminum housing
- 12,000 to 35,000 lm / 150W, 240W
- Multiple mounting options
- Egress, controls and high voltage options



NUVOLA



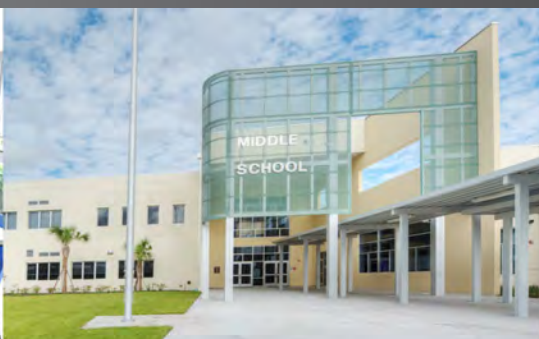
- Durable die-cast aluminum construction
- 10,000-37,000 lm / 90 to 240W/ 120-277V
- 90° & 120° beam distributions
- Multiple mounting configurations

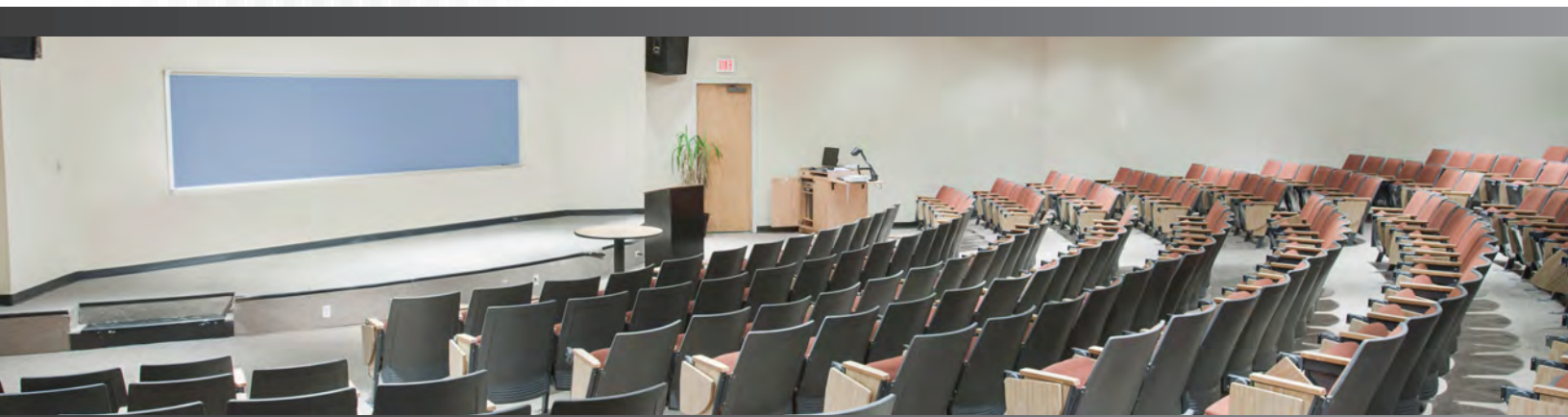


SWL SEL (4')



- CCT selectable (3500K/ 4000K/ 5000K)
- Power selectable (4200 to 6500 lm/ 28-46W)
- Optional occ sensor & battery backup
- DLC PREMIUM qualified for stairwells & passageways

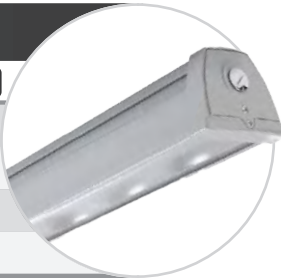




ACCIAIO® BX910LED SE (2')



- Emergency 1700 lm, up to 80' spacing (18' ht)
- Durable 24 gauge steel housing
- Polycarbonate diffuser std, tempered glass option
- 180-degree adjustable mount for ceiling or wall



FORTEZZA ⁺Plus



- Heavy-duty die-cast aluminum construction
- Impact-resistant polycarbonate cover
- Architectural high-abuse sign
- Universal mounting: ceiling, wall, end



ECCO LUNA LED



- Durable polycarbonate construction
- Fully enclosed heads protect positioning
- Surface wall or ceiling mount
- Up to 80 ft spacing from 932 lm (5000K CCT)



FORTEZZA COMBO



- Heavy-duty die-cast aluminum construction
- Wall, ceiling or end mounting
- Impact-resistant polycarbonate cover
- Enclosed & protected MR16 lamps



EVR



- Durable 16 gauge steel housing and faceplate
- Polycarbonate shield between frame & faceplate
- Tamper resistant screws standard
- Full length canopy for ceiling or end mounting



TEMPESTA® LED ECO



- Up to 925 lm in emergency mode
- 90 minutes standard illumination (NiMH)
- Up to 42 ft on-center spacing
- EM only and AC & EM models/ Surface & ceiling mounting





LIGHTING NEEDS:

- Overhead and wide spread lighting are essential
- On/off sensors are needed
- Lights must be durable and serviceable



QUESTIONS YOU SHOULD ASK:

- What type of sensor is needed?
- Is emergency back-up important?
- Is there a standard color temperature?

BS101LED ECO



- UV-stabilized polycarbonate construction
- 4744 to 7919 lm / 35W & 55W
- Occ sensor and integral emergency options
- Multiple mounting configurations



ECCO LUNA LED



- Durable polycarbonate construction
- Fully enclosed heads protect positioning
- Surface wall or ceiling mount
- Up to 80ft spacing from 932 lm (5000K CCT)



SWL SEL (4')



- CCT selectable (3500K/ 4000K/ 5000K)
- Power selectable (4200 to 6500 lm/ 28-46W)
- Optional occ sensor & battery backup
- DLC PREMIUM qualified for stairwells & passageways



CURVA 2



- Single SKU: Field selectable red/green LED, single & double panels, universal surface mounting
- Pivoting design for ease of installation
- Autotest standard (SA models)



PLURALUCE® INDOOR



- Compact, architectural aluminum housing
- LEDs deliver 782 to 845 lm (4000K CCT)
- Up to 60' on-center spacing in emergency operation
- Symmetrical & asymmetrical optics included



EPC - EVERY PROJECT COMBO



- Standard 0.5W LED lamp heads yield 12' spacing
- H0 option (2W LED lamp heads) yields 35' spacing
- Autotest, remote capacity and black housing options
- Single SKU: red/green letters, 1/2 face, universal mounting



BBX



- Adjustable LED heads deliver up to 132' spacing
- Remote capable & autotest options
- Maintenance-free LiFePO4 battery
- Wall, pendant, i-beam and ceiling mount



EPX - EVERY PROJECT EXIT SIGN



- Field selectable chevrons
- Architectural curved face with rounded corners
- Autotest, USA assembly & black housing options
- Single SKU: red/green letters, 1/2 face, universal mounting





NON-BUGEYE EMERGENCY | COMMERCIAL



LIGHTING NEEDS:

- Blend seamlessly into design
- Maintains clean lines and modern aesthetics
- Provides code-complaint egress lighting in emergencies
- Multiple mounting options
- Battery backup



QUESTIONS YOU SHOULD ASK:

- Is it easy to maintain and install?
- What is the expected battery life and emergency runtime?
- Does it offer autotest?
- What warranty and support are offered?

ACCIAIO® BX910LED SE (2')

TITLE
20



- Emergency 1,700 lm, up to 80' spacing (18' ht)
- Durable 24 gauge steel housing
- Polycarbonate diffuser std, tempered glass option
- 180-degree adjustable mount for ceiling or wall



TEMPESTA® LED

TITLE
24



- Up to 70 ft spacing on-center
- HT/SA: 15W @ 1900 lm (4000K CCT)
- SE: 10W @ 1350 lm (4000K CCT)
- Autotest and 120-347VAC input standard



PLURALUCE® INDOOR



- Compact, architectural aluminum housing
- LEDs deliver 782 to 845 lm (4000K CCT)
- Up to 60' on-center spacing in emergency operation
- Symmetrical & asymmetrical optics included



PLURALUCE® HZ



- Compact modern die-cast design, gray std
- Class I, Division 2, Groups A, B, C, D
- Symmetrical & asymmetrical optics included
- 4000K LEDs deliver 1349 to 1414 lm & up to 60' spacing



PLURALUCE® SQUARE RECESSED



- Clean, modern look with seamless trim
- LEDs deliver 1349 to 1414 lm (4000K CCT)
- Up to 60 ft on-center spacing
- Symmetrical and asymmetrical optics included



PLURALUCE® RECESSED



- Low-profile trim for seamless fit in ceiling
- Surface or recessed mount
- Autotest standard, 3W remote option
- Adjustable recessed LED lamps deliver up to 60' spacing



PLURALUCE® WP UNIT



- Compact (7" sq), durable aluminum construction
- Emergency option achieves up to 60 ft spacing
- 4000K LEDs deliver 1349-1414 lm
- Symmetrical & asymmetrical optics included



MURO

TITLE
24

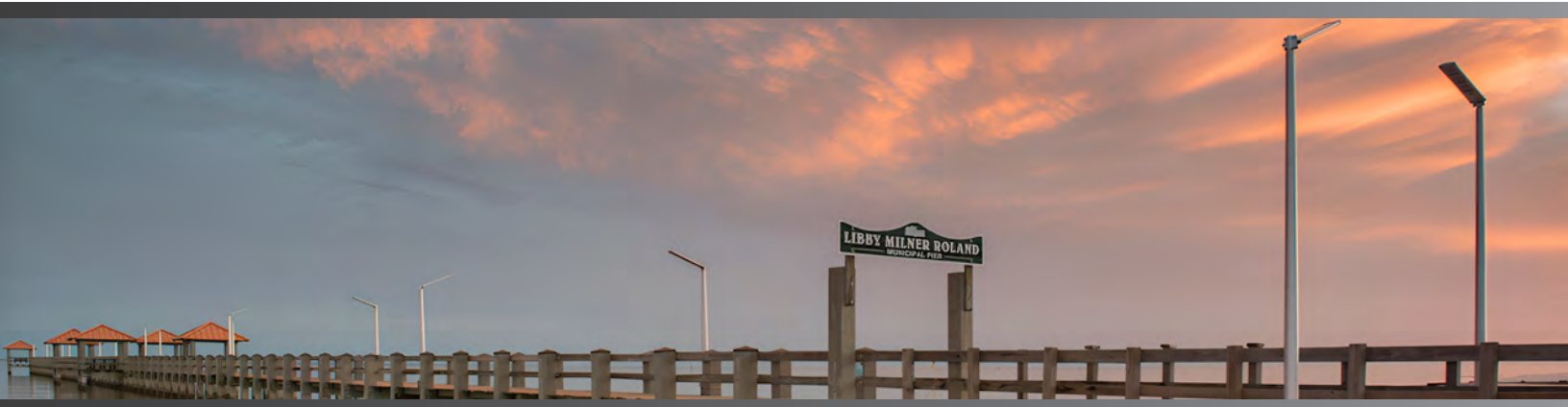


- Low-profile emergency LED wallpack
- Photocontrol with optional PIR sensor
- Up to 60 ft on-center spacing
- Operating temp -25°C to +50°C





EXTERIOR



EXTERIOR | PATHWAY & SITE SIGNAGE



LIGHTING NEEDS:

- You must know the environment where the product is being installed
- Easy maintenance of exterior luminaires is important
- Know the hours of operation that the luminaires will be running



QUESTIONS YOU SHOULD ASK:

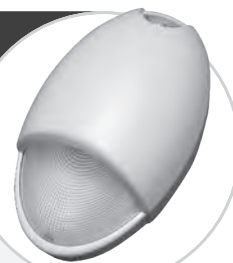
- What is the environment like that the luminaires will be installed in?
- Is the luminaire easily accessible?
- Can people come in direct contact with the luminaire?

LUCE SOLARE



- Solar powered area lighting family (5 sizes)
- 1630 to 8150 lm (5700K CCT)
- Low profile with integral solar panel and battery
- Includes PIR sensor and 3 operating modes

MEZZO



- 12W LED emergency wall pack in multiple finishes
- Photocontrol and autotest are standard
- Die-cast aluminum with polycarbonate lens
- Cold location option operates to -30°C

PICCOLO (PSF)



- Small CCT selectable floods (3500/4000/5000K)
- Die-cast aluminum housing in dark bronze
- 3 outputs with an IK10 rated lens
- 2000 to 7200 lm/ 16W, 31W, 50W

MURO



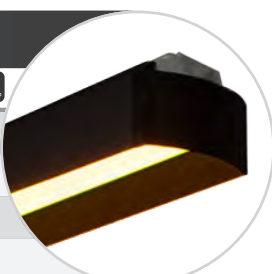
- Low-profile emergency LED wallpack
- Photocontrol with optional PIR sensor
- Up to 60 ft on-center spacing
- Operating temp -25°C to +50°C

BOXLED MIDI



- 3G rated, die-cast aluminum construction
- Low glare, tempered glass lens
- 3800 to 13,900 lm / 50 to 90W
- Field changeable symmetric/ asymmetric distribution

TURTLE LED (2', 4')



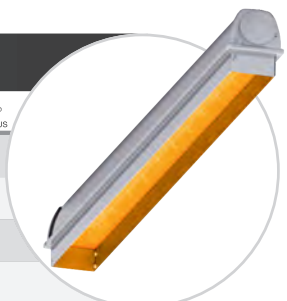
- Fully shielded polycarbonate construction
- FWC approved, amber LED 590 nm
- Turtle-friendly lighting ideal for all coastal areas
- Emergency and multiple mounting options available

MULTIPURPOSE LUMINAIRES



- Die-cast aluminum housing in bronze finish
- 1600 to 36,000 lm / 15 to 280W
- Ideal for area and flood lighting
- Multiple mounting options

ACCIAIO® ECO AMBER (4')



- Fully shielded steel housing & glass lens
- FWC approved, amber LED 590 nm
- Turtle-friendly, ideal for all coastal areas
- Wireless controls, sensors and mounting options

APPLICATION GUIDE 2025

We've got a solution for you!



Beghelli

3810 Executive Way
Miramar, Florida 33025
+1-954-442-6600