

COLD LOCATION
**EMERGENCY
SOLUTIONS**



MURO

EMERGENCY LED WALLPACK

UL924 listed, low-profile, emergency wallpack

Cold location models: -25°C to 50°C

Up to 60 ft on-center spacing

1500 lm / 600 lm (EM mode), 4000K CCT

Photocontrol standard, PIR optional



WET LOCATION EMERGENCY LIGHT

Eco-friendly, long-life LiFePO4 technology

Cold location models: -20°C to 50°C (std)

Up to 35 ft spacing (std), 118 ft spacing (HO)

Wall or ceiling mount

CEC Title 20 compliant



BBX WET



MEZZO

WET LOCATION EMERGENCY

12W LED emergency wallpack in multiple finishes

Cold location models: -30°C to 50°C

1275 lm (AC) / 351 lm (EM) - up to 20 ft spacing

Die-cast aluminum with polycarbonate lens

Photocontrol and autotest are standard



VANDAL RESISTANT EMERGENCY

- Heavy duty die-cast aluminum construction
- Cold location models: -20°C to 40°C
- High output, adjustable MR16 LED lamp options
- Fully gasketed with "memory" retention
- Wall or ceiling mount



BRAVADO



EDT

INDUSTRIAL EMERGENCY UNIT

- Durable, fully gasketed, fiberglass cabinet
- Cold location models: -20°C to 40°C
- LED + Incandescent lamp head options
- Die-cast aluminum heads
- 6/12/24V models up to 360W capacity



WET LOCATION EMERGENCY UNIT

- Corrosion + flame resistant thermoplastic housing
- Cold location models: -25°C to 40°C
- Up to 76 ft on-center spacing
- Fully adjustable 7.2W MR16 LED lamp heads
- Designed for wall or ceiling installation



XMR WL



FORTEZZA (FTZ)

VANDAL RESISTANT EXIT SIGN

Heavy-duty, die-cast aluminum construction

Cold location models: -40°C to 40°C

1/8" impact resistant polycarbonate shield

Universal mounting

Autotest standard



VANDAL RESISTANT EXIT SIGN

Heavy duty die-cast aluminum construction

Cold location models: -40°C to 45°C

1/8" impact resistant polycarbonate cover

Slim, architectural design

Universal mounting, autotest optional



FORTEZZA PLUS

VANDAL RESISTANT COMBO UNIT

Heavy duty die-cast aluminum construction

Cold location models: -40°C to 40°C

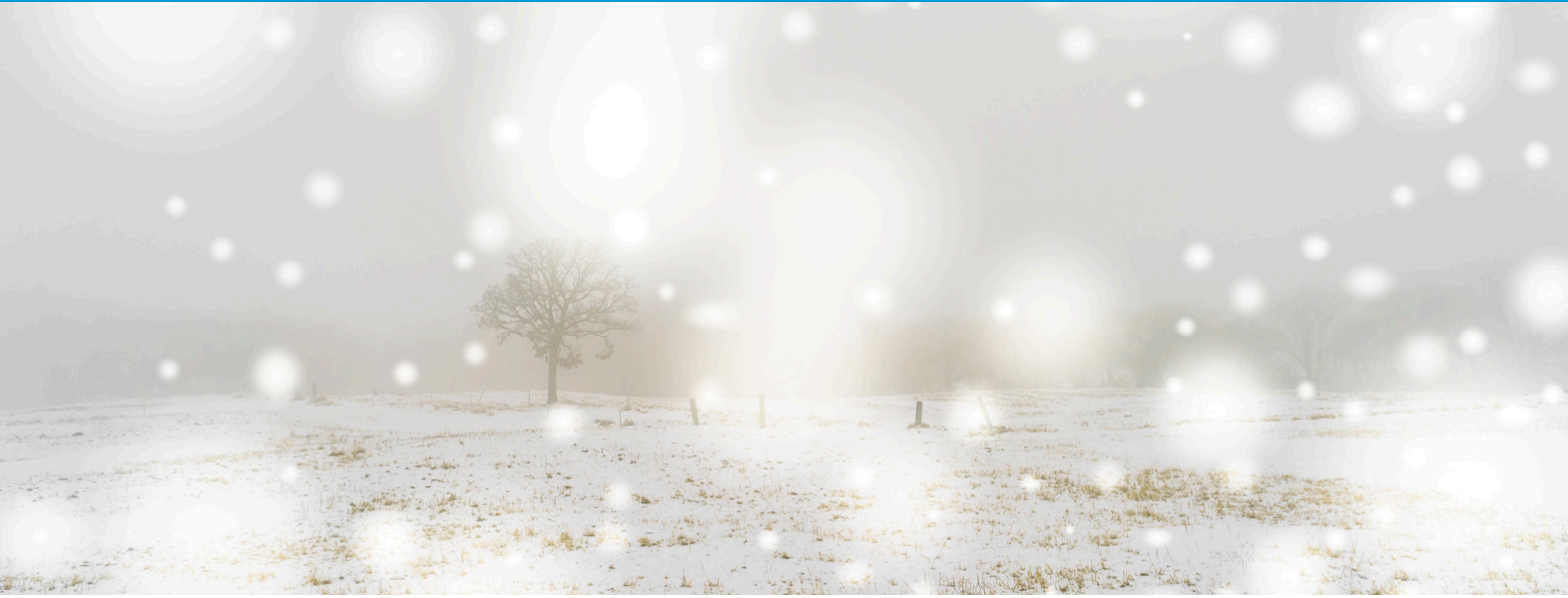
1/8" impact resistant polycarbonate cover

Enclosed and protected MR16 LED lamps

Universal mounting, autotest optional



FORTEZZA COMBO



SELF-LUMINOUS EXIT TRITIUM SIGN

Corrosion resistant ABS thermoplastic housing

Self-powered illumination

Cold location models: -55°C to 80°C

Suitable for any environment

Universal mounting



WEATHERPROOF EXIT COMBO

Durable, corrosion resistant housing

Cold location models: -20°C to 40°C

Fully gasketed polycarbonate lens

LED + incandescent lamp head options

Ceiling, wall or end mounting





BEGHELLI USA
3810 Executive Way
Miramar, FL 33025
954.442.6600

www.beghelliusa.com