

CASTEX 600



HAZARDOUS

- The **CASTEX 600** is a hazardous location LED lighting fixture rated for use in:

- Class I, Division 1, Groups C, D
- Class I, Division 2, Groups A, B, C, D
- Class II, Division 1, Groups E, F, G
- Class II, Division 2, Groups F, G
- Class III
- Class I, Zone 1, Group IIB
- Class II, Zone 21, Group IIIC
- UL1598 (Wet Location) & UL1598A (Marine)
- Temperature Code: T4

- The **CASTEX 600** comes standard in gray with a stainless steel (304) bracket and stainless steel hardware

- **HOUSING:** Die-cast, copper-free, 6mm thick ADC12 aluminum alloy body with marine grade RAL7040 powder coat finish

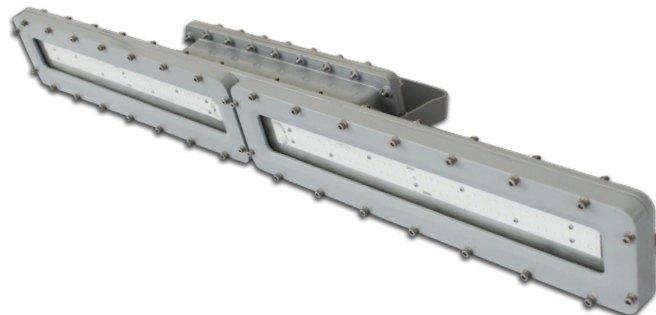
- **DIFFUSER:** Clear tempered glass cover, 120° wide beam distribution standard

- **DIMMING:** 0-10VDC dimming standard

- **COLOR TEMPERATURE:** 5000K standard

- **LUMENS:**

- VLO: 40W @ 5600 lm (EM: 15W @ 2100 lm)
- HO: 80W @ 11200 lm (EM: 15W @ 2100 lm)
- VHO: 100W @ 14000 lm (EM: 15W @ 2100 lm)



- **WEIGHT:**

- 4ft: 40.8 lbs

- **OPERATING TEMP:**

- HT (AC Only) -40°F to 140°F (-40°C to 60°C)*
- SA (AC & EM) 14°F to 140°F (-10°C to 60°C)
- *VHO model is rated to 40°C (104°F)

- **APPLICATION:** The **CASTEX 600** is designed for impact resistance and is ideal for the oil and gas industry, paint facilities, pumping stations, metal smelting, foundry and fabrication, food processing, alcohol distilling, waster water treatment plant, paper mills and other high corrosion, high humidity, high vapor, high dust and high temperature locations.

ORDERING INFORMATION

Example: HZCAS600 4HT HO DIM WT50 120-277V

MODEL	LENGTH ¹	OPERATION	OUTPUT	DIMMING	COLOR TEMP	INPUT	OPTIONS	
HZCAS600	4 ² (ft)	HT (AC only)	VLO	DIM (0-10V dimming)	WT50 ⁴ (5000K)	120-277V	BAA (Buy American Act)	
		SA ³ (AC & EM)	HO				HV ⁵	ACCESSORIES
			VHO					HZCH39 ⁶ (39" chain)
							HZJBOX (J-box)	
							HZPK12 (12" pendant stem)	

NOTE 1: Consult factory for 2' models (longer lead times apply)

NOTE 2: 4' available in 40W (VLO), 80W (HO) & 100W (VHO)

NOTE 3: Contact factory for lead time

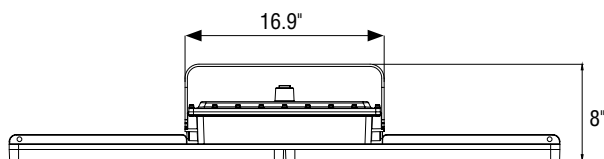
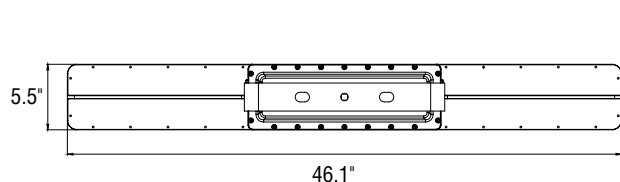
NOTE 4: Other color temperatures available (2200K to 7000K), contact factory for lead time

NOTE 5: High voltage option available (200 to 480V), contact factory for lead time

NOTE 6: Single 39" (1m) stainless steel chain, can be field cut

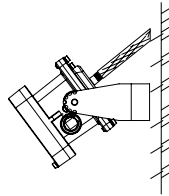
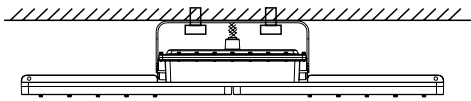
NOTE: Surface ceiling/ wall mount is standard

DIMENSIONS

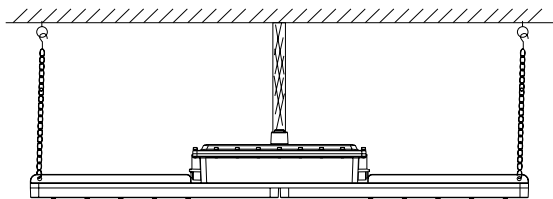


MOUNTING OPTIONS

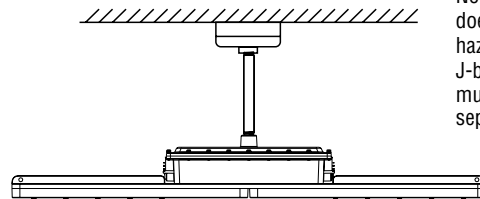
Standard
(surface/ceiling mount bracket)



Suspension Mount
(HZCH39)



Pendant Mount
(HZPK12)



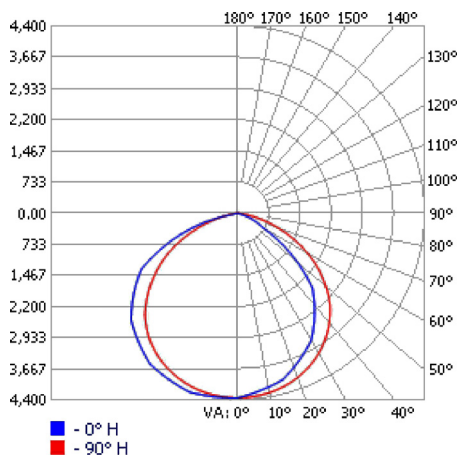
Note: HZPK12 does not include hazardous rated J-box. HZJBOX must be ordered separately.

NOTE: Power cord cannot be exposed. Hazardous conduit or hazardous J-box mounting required.

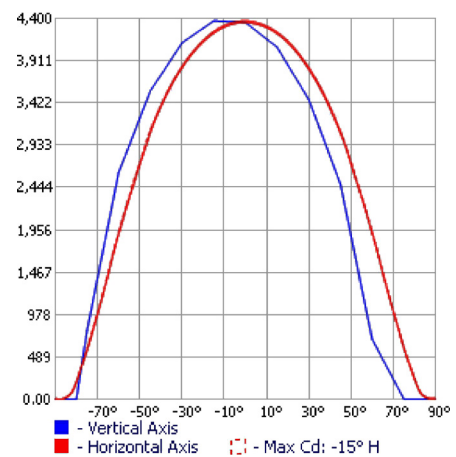
PHOTOMETRICS

HZCAS600HT VHO WT50 120-277V

POLAR CURVES



ISOLINES



CASTEX 600

ENERGY CHART

MODEL (5000K CCT)	EFFICACY	CONSUMPTION WATTAGE	LUMEN OUTPUT	CRI	L70 (HRS) @ 55°C
4FT					
HZCAS600 4HT VLO	140 LPW	40W	5600 lm	>70	>150,000
HZCAS600 4HT H0	140 LPW	80W	11200 lm	>70	>150,000
HZCAS600 4HT VHO	140 LPW	100W	14000 lm	>70	>150,000

ELECTRICAL RATING

PRODUCT	NOMINAL POWER (W)	AC CURRENT (A) AC VOLTAGE		FREQUENCY (HZ)	DC VOLTAGE (V)	DC CURRENT (MA)
		120 V	277 V			
4FT						
HZCAS600 4HT VLO	40W	0.34	0.15	50/60	48	835
HZCAS600 4HT H0	80W	0.68	0.29	50/60	48	1670
HZCAS600 4HT VHO	100W	0.85	0.37	50/60	48	2090

■ **WARRANTY:** 5 years, see website for full warranty details