

# CASTEX 600



## HAZARDOUS

- The **CASTEX 600** is a hazardous location LED lighting fixture rated for use in:
  - Class I, Division 1, Groups C, D
  - Class I, Division 2, Groups A, B, C, D
  - Class II, Division 1, Groups E, F, G
  - Class II, Division 2, Groups F, G
  - Class III
  - UL1598 (Wet Location) & UL1598A (Marine)
  - Temperature Code: T4
- The **CASTEX 600** comes standard in gray with a stainless steel (304) bracket.
- **HOUSING:** Die-cast, copper-free, 6mm thick ADC12 aluminum alloy body with marine grade RAL7040 powder coat finish.
- **DIFFUSER:** Polycarbonate lens with 4mm tempered glass cover, 120° distribution. Other distributions available (40°, 60° & 90°), contact factory for details.
- **COLOR TEMPERATURE:** 5000K. Other color temperatures available (2200K to 7000K), contact factory for details.
- **LUMENS:**

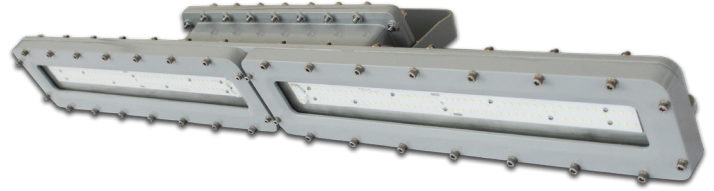
**2FT\***

  - LO: 50W @ 6955 lm (EM: 15W @ 2087 lm)
  - MO: 60W @ 8056 lm (EM: 15W @ 2014 lm)

**4FT**

  - MO: 60W @ 9037 lm (EM: 15W @ 2259 lm)
  - HO: 80W @ 11896 lm (EM: 15W @ 2231 lm)
  - VHO: 100W @ 13523 lm (EM: 15W @ 2028 lm)

\*For VLO availability, contact factory



- **OPERATING TEMP:**
  - HT (AC Only) -40°F to 140°F (-40°C to 60°C)\*
  - SA (AC & EM) 14°F to 140°F (-10°C to 60°C)
  - \*VHO model is rated to 40°C (104°F)
- **WEIGHT:**
  - 2ft: 26.4 lbs (12 kg)
  - 4ft: 40.8 lbs (18.5 kg)
- **APPLICATION:** The **CASTEX 600** is a heavy duty, high impact linear fixture suitable for mining, power generation stations, military, aerospace, oil, gas, chemical production, marine and ocean platform industries. The luminaire is suited for high humidity, high vapor, high dust and high temperature locations.

## ORDERING INFORMATION

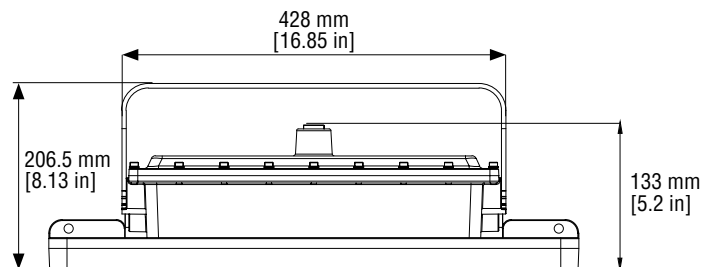
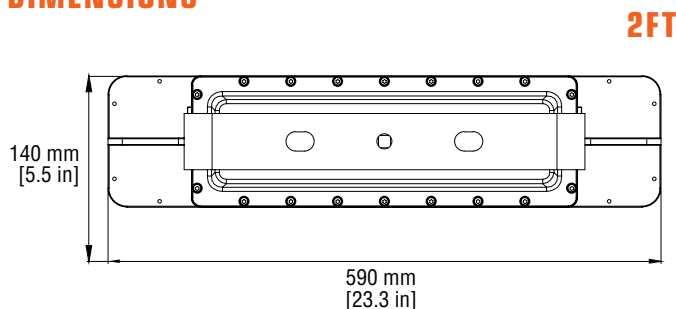
Example: HZCAS600 4HT HO DIM WT50 120-277V

MODEL	LENGTH	OPERATION	OUTPUT	DIMMING	COLOR TEMP	INPUT	OPTIONS
HZ-CAS600	2' (ft)	HT (AC only)	LO	DIM (0-10V dimming)	WT50 <sup>4</sup> (5000K)	120-277V	BAA (Buy American Act)
	4' (ft)	SA <sup>3</sup> (AC & EM)	MO				HV <sup>5</sup>
			HO				HZCH39 <sup>6</sup> (39" chain)
			VHO				HZJBOX (J-box)
							HZPK12 (12" pendant stem)

NOTE 1: 2 ft available in 50W (LO) & 60W (MO)  
 NOTE 2: 4 ft available in 60W (MO) to 100W (VHO)  
 NOTE 3: Contact factory

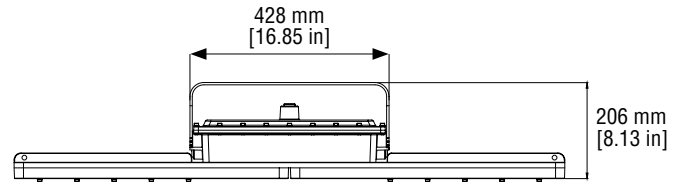
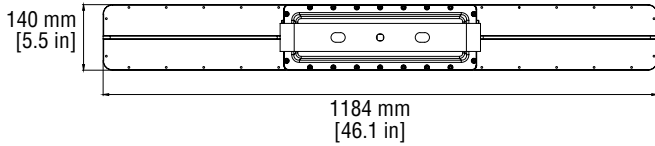
NOTE 4: Other color temperatures available (2200K to 7000K), contact factory  
 NOTE 5: High voltage option available (200 to 480V), contact factory for lead time  
 NOTE 6: Single 39" (1m) stainless steel chain, can be field cut  
 NOTE: Surface/wall mount is standard

## DIMENSIONS



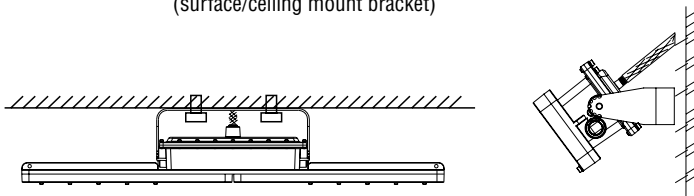
## DIMENSIONS

4FT

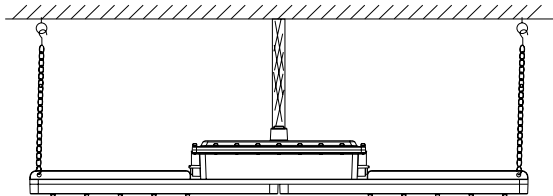


## MOUNTING OPTIONS

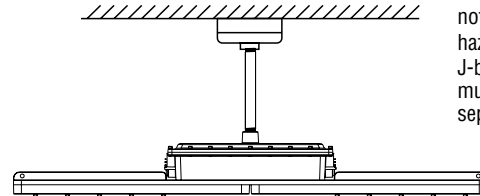
**Standard**  
(surface/ceiling mount bracket)



**Suspension Mount**  
(HZCH39)



**Pendant Mount**  
(HZPK12)



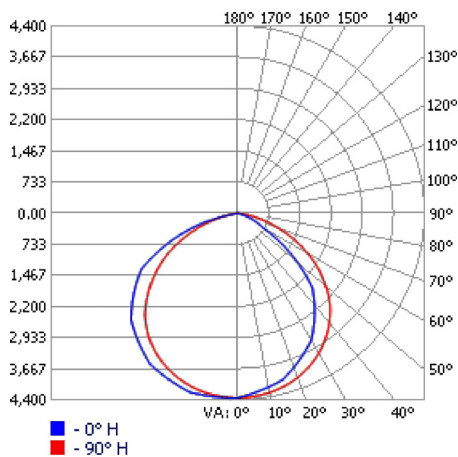
Note: PK12 does not include hazardous rated J-box. HZJBOX must be ordered separately.

NOTE: Power cord cannot be exposed. Hazardous conduit or hazardous J-box mounting required.

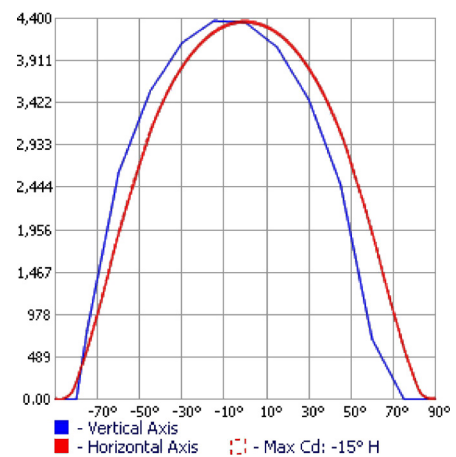
## PHOTOMETRICS

**HZCAS600HT VHO WT50 120-277V**

**POLAR CURVES**



**ISOLINES**



# CASTEX 600

## ENERGY CHART

MODEL (5000K CCT)	EFFICACY	CONSUMPTION WATTAGE	LUMEN OUTPUT	CRI	L70 (HRS) TESTED	L70 (HRS) PROJECTED
<b>2FT</b>						
HZCAS600 2HT L0	136 lm/W	50W	6955 lm	>70	>44,000	>72,000
HZCAS600 2HT M0	133 lm/W	60W	8056 lm	>70	>44,000	>72,000
<b>4FT</b>						
HZCAS600 4HT M0	152 lm/W	60W	9037 lm	>70	>44,000	>72,000
HZCAS600 4HT H0	149 lm/W	80W	11896 lm	>70	>44,000	>72,000
HZCAS600 4HT VH0	135 lm/W	100W	13523 lm	>70	>44,000	>72,000

## ELECTRICAL RATING

PRODUCT	NOMINAL POWER (W)	AC CURRENT (A) AC VOLTAGE		FREQUENCY (HZ)	DC VOLTAGE (V)	DC CURRENT (MA)
		120 V	277 V			
<b>2FT</b>						
HZCAS600 2HT L0	50W	0.42	0.18	50/60	48	1040
HZCAS600 2HT M0	60W	0.51	0.22	50/60	48	1250
<b>4FT</b>						
HZCAS600 4HT M0	60W	0.51	0.22	50/60	48	1250
HZCAS600 4HT H0	80W	0.68	0.29	50/60	48	1670
HZCAS600 4HT VH0	100W	0.85	0.37	50/60	48	2090

■ **WARRANTY:** 5 years, see website for full warranty details.