

APPLICATION

For use around building exteriors in settings such as warehouses, factories, retail locations, offices, and similar locations.

CAUTION:

1. Read all instructions before starting installation.
2. This product must be installed in accordance with the applicable electrical codes by a qualified electrician familiar with the construction and operation of the product and the hazards involved.
3. Disconnect power at circuit breaker or fuse before starting installation.
4. To avoid injury, wear gloves during installation.
5. To reduce the risk of electrical shock and product damage, do not install this luminaire during rain or other storms.
6. Do not test luminaire using an electric generator before installation.
7. Use minimum 75°C supply wires.

INSTALLATION

KNUCKLE MOUNT:

Knuckle mount models are intended to be mounted to a junction box (supplied by others) suitable for the installation environment.

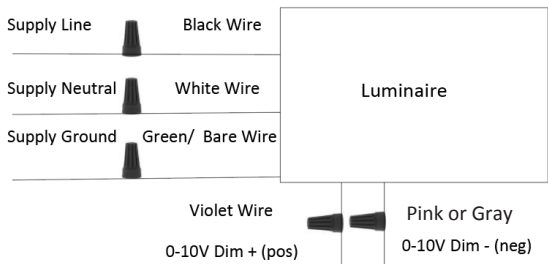
1. Secure luminaire to appropriate junction box.
2. Make supply connections inside junction box (see Wiring Diagram).
3. Replace junction box cover.
4. To adjust the vertical position of the luminaire, use a Philips head screwdriver to loosen the adjustment screw. Reposition the luminaire head to the desired position, then re-tighten the adjustment screw (see Figure 1).

YOKE MOUNT:

Yoke mount models are intended to be mounted to stationary structures including walls and soffits. Wiring connections need to be made in an appropriate junction box for the environment (supplied by others).

1. To install the luminaire, mark and drill mounting holes in the structure on which the luminaire will be mounted. Using appropriate hardware (supplied by others), attach the luminaire yoke to the stationary structure (see Figure 2).
2. To make wire connections, route the power cord to an appropriate junction box.
3. Make supply connections inside junction box (see Wiring Diagram).
4. Replace junction box cover.
5. To adjust the vertical position of the luminaire, use a hex wrench to loosen the adjustment screw, and reposition the luminaire head to the desired position, then re-tighten the screw (see Figure 2).

WIRING INSTRUCTIONS:



SAVE THESE INSTRUCTIONS!

FIG. 1

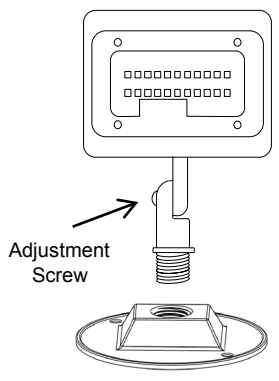
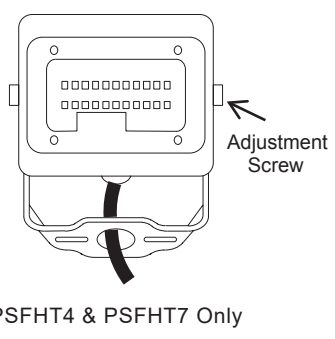
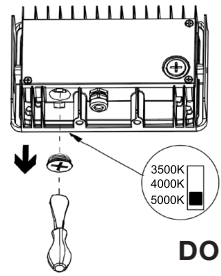


FIG. 2



CCT SELECT

Default Setting: 4000K



DO NOT SWITCH UNDER LOAD