

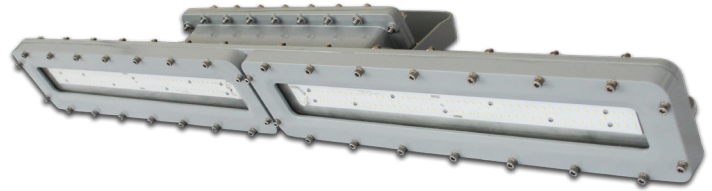
CASTEX 600



HAZARDOUS

- The **CASTEX 600** is a hazardous location LED lighting fixture rated for use in:
 - Class I, Division 1, Groups C, D
 - Class I, Division 2, Groups A, B, C, D
 - Class II, Division 1, Groups E, F, G
 - Class II, Division 2, Groups F, G
 - Class III
 - UL1598 (Wet Location) & UL1598A (Marine)
 - Temperature Code: T4
- The **CASTEX 600** comes standard in gray with a stainless steel (304) bracket.
- **HOUSING:** Die-cast, copper-free, 6mm thick ADC12 aluminum alloy body with marine grade RAL7040 powder coat finish.
- **DIFFUSER:** Polycarbonate lens with 4mm tempered glass cover, 120° distribution. Other distributions available (40°, 60° & 90°), contact factory for details.
- **COLOR TEMPERATURE:** 5000K. Other color temperatures available (2200K to 7000K), contact factory for details.
- **LUMENS:**
 - 2FT***
 - LO: 50W @ 6955 lm (EM: 15W @ 2087 lm)
 - MO: 60W @ 8056 lm (EM: 15W @ 2014 lm)
 - 4FT**
 - MO: 60W @ 9037 lm (EM: 15W @ 2259 lm)
 - HO: 80W @ 11896 lm (EM: 15W @ 2231 lm)
 - VHO: 100W @ 13523 lm (EM: 15W @ 2028 lm)

*For VLO availability, contact factory.



- **OPERATING TEMP:**
 - HT (AC Only) -40°F to 140°F (-40°C to 60°C)*
 - SA (AC & EM) 14°F to 140°F (-10°C to 60°C)
 - *VHO model is rated to 40°C (104°F)
- **WEIGHT:**
 - 2ft: 26.4 lbs (12 kg)
 - 4ft: 40.8 lbs (18.5 kg)
- **APPLICATION:** The **CASTEX 600** is a heavy duty, high impact linear fixture suitable for mining, power generation stations, military, aerospace, oil, gas, chemical production, marine and ocean platform industries. The luminaire is suited for high humidity, high vapor, high dust and high temperature locations.

ORDERING INFORMATION

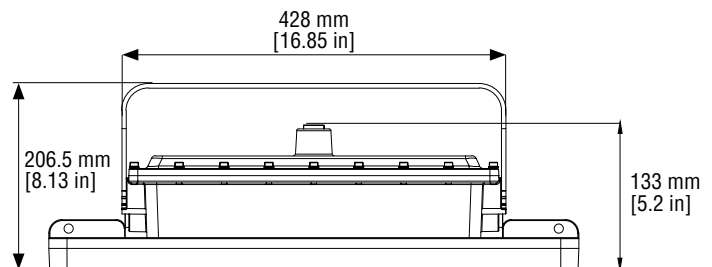
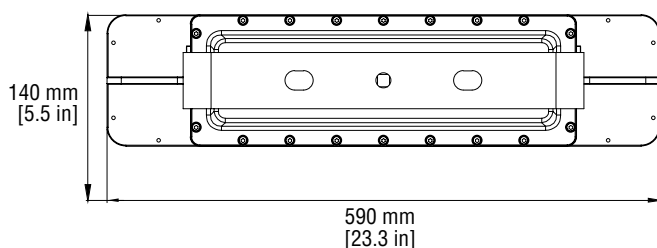
MODEL	LENGTH	OPERATION	OUTPUT	DIMMING	COLOR TEMP	INPUT	OPTIONS
HZ-CAS600	2' (ft)	HT (AC only)	LO	blank (no dimming)	WT50 ⁴ (5000K)	120-277V	BAA (Buy American Act)
	4' (ft)	SA ³ (AC & EM)	MO	DIM (0-10V dimming)			HV ⁵
			HO				HZ-JBOX (J-box)
			VHO				HZ-PK12 (12' pendant stem)

NOTE 1: 2 ft available in 50W (LO) to 60W (MO).
 NOTE 2: 4 ft available in 60W (MO) to 100W (VHO).
 NOTE 3: Contact factory.

NOTE 4: Other Color temperatures available (2200K to 7000K). Contact factory.
 NOTE 5: High voltage option available (200 to 480V). Contact factory.
 NOTE 6: Single 39" (1m) stainless steel chain. Can be field cut.
 NOTE: Surface/wall mount is standard.

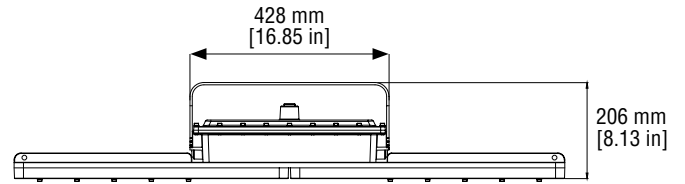
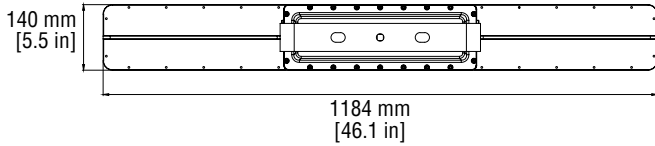
DIMENSIONS

2FT



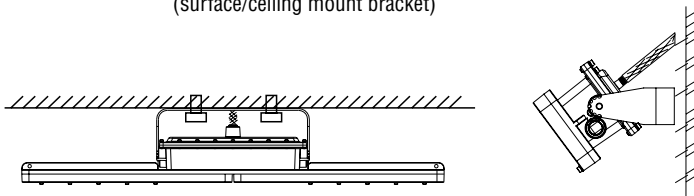
DIMENSIONS

4FT

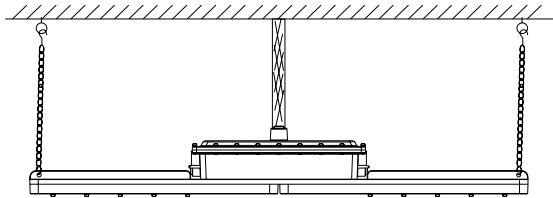


MOUNTING OPTIONS

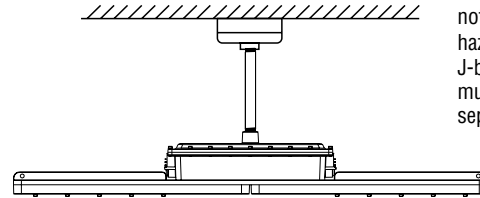
Standard
(surface/ceiling mount bracket)



Suspension Mount
(HZ-CH39)



Pendant Mount
(HZ-PK12)



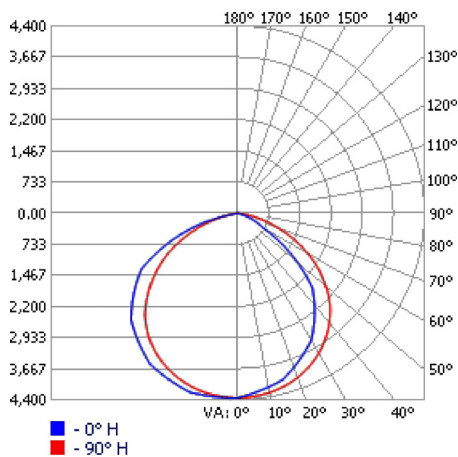
Note: PK12 does not include hazardous rated J-box. J-box must be ordered separately.

NOTE: Power cord cannot be exposed. Hazardous conduit or hazardous J-box mounting required.

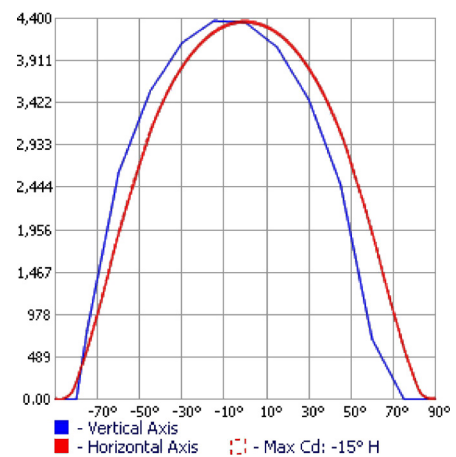
PHOTOMETRICS

HZ-CAS600-HT-VH0-WT50-120-277V

POLAR CURVES



ISOLINES



CASTEX 600

ENERGY CHART

MODEL	EFFICACY	CONSUMPTION WATTAGE	LUMEN OUTPUT	CRI	L70 (HRS) TESTED	L70 (HRS) PROJECTED
2FT						
HZ-CAS-600-2HT-L0-WT50-120-277V	136 lm/W	50W	6955 lm	>70	>44,000	>72,000
HZ-CAS-600-2HT-M0-WT50-120-277V	133 lm/W	60W	8056 lm	>70	>44,000	>72,000
4FT						
HZ-CAS-600-4HT-M0-WT50-120-277V	152 lm/W	60W	9037 lm	>70	>44,000	>72,000
HZ-CAS-600-4HT-H0-WT50-120-277V	149 lm/W	80W	11896 lm	>70	>44,000	>72,000
HZ-CAS-600-4HT-VH0-WT50-120-277V	135 lm/W	100W	13523 lm	>70	>44,000	>72,000

ELECTRICAL RATING

PRODUCT	NOMINAL POWER (W)	AC CURRENT (A) AC VOLTAGE		FREQUENCY (HZ)	DC VOLTAGE (V)	DC CURRENT (MA)
		120 V	277 V			
2FT						
HZ-CAS-600-2HT-L0	50W	0.42	0.18	50/60	48	1040
HZ-CAS-600-2HT-M0	60W	0.51	0.22	50/60	48	1250
4FT						
HZ-CAS-600-4HT-M0	60W	0.51	0.22	50/60	48	1250
HZ-CAS-600-4HT-H0	80W	0.68	0.29	50/60	48	1670
HZ-CAS-600-4HT-VH0	100W	0.85	0.37	50/60	48	2090

■ **WARRANTY:** 5 years, see website for full warranty details.