

APPLICATION

GUIDE
2023

Beghelli

The logo for Beghelli, featuring the word "Beghelli" in a blue, sans-serif font, enclosed within a blue rectangular border.

Beghelli specializes in commercial, industrial lighting and life safety products. Beghelli designs, develops and manufactures state of the art innovative solutions.

The logo for Beghelli's Emergency & Exit line, featuring the word "Beghelli" in a bold, black, sans-serif font, with "Emergency & Exit" in a yellow, sans-serif font below it, all enclosed within a black rectangular border.

Beghelli's emergency line features exit signs and emergency luminaires for indoor, wet and hazardous applications. All Beghelli's emergency products have been designed to be innovative, code compliant solutions.

The logo for Beghelli's LUCE line, featuring a red, stylized leaf graphic above the word "Beghelli" in a red, sans-serif font, with "LUCE" in a smaller, red, sans-serif font below it.

Beghelli's lighting line features industrial and commercial solutions that promote energy savings achieved through smart technology and design.

The logo for Beghelli's fiore line, featuring a green, stylized leaf graphic above the word "Beghelli" in a green, sans-serif font, with "fiore" in a smaller, green, sans-serif font below it.

Beghelli's fiore line features lamps and led modules, specifically made for horticulture. These grow lights increase harvest volumes, increase the growing season and improve the nutraceutical properties of the plants.

A large, blue, sans-serif letter "B" that serves as a section header for the application guide.

FIELD APPLICATION GUIDE

A perfect guide for your every application; combining emergency and lighting solutions.



SPECIAL FEATURE ICON GUIDE

Look for these icons as they apply to specific products.

	3G Vibration Rated	Can withstand fundamental resonant frequency vibrations for 100,000 cycles on each plane (x, y, z). Based on ANSI C136.31 specs.
	Meets Buy America Act	Made in America.
	Suitable for Cold Locations	Works in cold temperatures down to -40°C/F.
	Suitable for Damp Locations	Locations protected from weather and not subject to saturation with water or other liquids but subject to moderate degrees of moisture.
	Design Light Consortium Listed Product	Rated for energy efficiency.
	Suitable for Hazardous Locations	The National Electrical Code (NEC) defines hazardous locations as those areas “where fire or explosion hazards may exist due to flammable gases or vapors, flammable liquids, combustible dust, or ignitable fibers or flyings.”
	IK Code for Impact Resistance	Rated for impact resistance. Scales 01-10, with 10 being the most resistant. For more information, go to: en.wikipedia.org/wiki/EN_62262
	Impact & Vandal Resistant	Designed to withstand impacts and attempts at tampering.
	Ingress Protection Code	As defined in the International Electrotechnical Commission (IEC) 60529. The first digit relates to solid particle protection, and the second digit to liquid ingress protection. For more info: en.wikipedia.org/wiki/IP_Code
	Suitable for Indoor Locations	Not meant for outdoor or exterior illumination.
	NEMA 4X	The National Electrical Manufacturers Association’s (NEMA) specifications for electrical products with a water and dust-resistant gasket.
	Remote Capable	Capable of installing remote lamp heads onto product.
	Restriction of Hazardous Substances	Complies with the Restriction of Hazardous Substances act.
	NSF Sanitation Compliant	Complies with the specifications for NSF/ANSI sanitation codes for food storage and preparation.
	Title 20 Listed	California product specs for energy efficiency.
	Title 24 Listed	California building standards code for “energy conservation, green design, construction and maintenance, fire and life safety, and accessibility”.
	Type IC (Insulation Contact)	Safe to install fiberglass and cellulose insulation in contact with the lighting.
	Suitable for Wet Locations	A location in which water or other liquid can drip, splash, or flow on or against electrical equipment.
	Wildlife Lighting Certification	Rated as appropriate illumination for not disturbing wildlife by the Florida Fish and Wildlife Conservation Commission.

Beghelli products are certified by CSA, UL and ETL laboratories.



TABLE OF CONTENTS



INDUSTRIAL

05

- 06 FOOD PROCESSING
- 07 REFRIGERATION
- 08 PARKING DECKS
- 09 WAREHOUSE
- 10 HAZARDOUS



COMMERCIAL

11

- 12 RETAIL
- 14 HOSPITALITY
- 16 EDUCATION
- 18 OFFICES
- 19 STORAGE



EXTERIOR

20

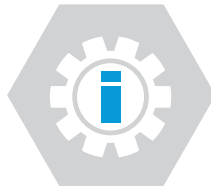
- 21 PATHWAY/SIGNAGE/SITE/AREA



HORTICULTURAL

22

- 23 HORTICULTURAL



INDUSTRIAL





LIGHTING NEEDS:

- NSF or equivalent certification is required
- Wash down environments are common
- Controls and sensors



QUESTIONS YOU SHOULD ASK:

- Does the luminaire have the required certifications for the environment?
- Will the luminaires be hosed down? If "yes" with what PSI?
- Are any controls / sensors needed in this environment?



FOOD PROCESSING

Food processing facilities have a very specific set of demands. Due to the variety of spaces, different types of lighting solutions need to be applied accordingly. Cold storage, splash zones or warehouse spaces should be fitted with a product that meets their safety, durability, and lighting needs.

These areas may consist of:

- Smoke
- Oil
- Dust
- Streaming water
- Pressurized wash downs
- Cleaning or chemical solutions
- Extreme temperatures

BOXLED®



- Die-cast aluminum housing
- 15,000 to 26,000 lm / 150W, 230W
- Multiple distributions and mounting
- Egress, controls and high voltage options



TEMPESTA™ LED



- Up to 70 ft spacing on-center
- Up to 1,384 lm in emergency
- Up to 1,990 lm in AC mode (4000K CCT)
- Autotest and 120-347VAC input standard



BS100LED (2', 4')



- 100% polycarbonate construction
- 3,900 to 11,500 lm / 30W to 70W
- L70 > 60,000 hrs
- Multiple mounting configurations



FTZ + Plus



- Heavy duty die-cast aluminum construction
- Impact resistant polycarbonate cover
- Architectural high-abuse sign
- Universal mounting- ceiling, wall, end



ACCIAIO®ECO BX910LED (4')



- Durable steel construction
- 3,500 to 5,500 lm
- Tempered glass lens controls glare
- 7 year warranty



BOLLA WP



- Heavy duty die-cast aluminum construction
- Protection against moisture & corrosion
- Impact resistant polycarbonate cover
- Compact surface or ceiling mount design





REFRIGERATION | INDUSTRIAL



LIGHTING NEEDS:

- Cold temperature operation is required
- On/off sensors often used
- Wash down environments are common



QUESTIONS YOU SHOULD ASK:

- What is the minimum operating temperature of the luminaire?
- Does the luminaire have the appropriate ratings for this environment?
- Is emergency operation needed?

FORTEZZA® EXIT



- Heavy-duty, die-cast aluminum construction
- Universal mounting
- 1/8" Impact-resistant polycarbonate shield
- Internal heater option operates to -20°C



TESTA



- Die-cast aluminum construction
- High output 2328 lm
- Impact resistant acrylic lens
- Stainless steel swivel for precise aiming



MEZZO



- 12W LED emergency wall pack in multiple finishes
- Photocontrol and autotest are standard
- Die-cast aluminum with polycarbonate lens
- Cold location option operates to -30°C



WLX



- Internal heater option operates to -20°C
- Polycarbonate lens and fiberglass housing
- Hot-bonded liquid gasket for maximum seal
- Combo and custom wording available



BS101LED (4')



- UV stabilized polycarbonate housing & diffuser
- 5,800 to 10,350 lm / 40W to 60W
- Corrosion, flame & vandal resistant
- Multiple mounting configurations



EDT



- Durable, fully gasketed, fiberglass cabinet
- Die-cast aluminum heads
- -20°C to +40°C operation with heater option
- 6 / 12 / 24V Models up to 360W capacity



BOXLED® 736



- Die-cast aluminum housing
- 15,000 to 26,000 lm / 150W, 230W
- Multiple distributions and mounting
- Egress, controls and high voltage options



BRAVADO



- Heavy duty die-cast aluminum construction
- Up to 70 ft on-center spacing
- Designed for wall or ceiling installation
- -20°C Operation with internal heater option



INDUSTRIAL | PARKING DECKS



LIGHTING NEEDS:

- Reducing maintenance time is important
- Proper lighting when occupied is required
- Wet location luminaires are ideal for parking decks

QUESTIONS YOU SHOULD ASK:

- Will this area require hose down cleaning?
- Should I use sensors in a parking deck?
- What mounting options do I have that can optimize performance?

BS400 LED



- Low profile, durable die-cast housing
- 3,500 to 7,200 lm / 30, 45, 60W
- UV stabilized, low glare frosted lens
- Easy installation in multiple mounting configurations



BS400 LED PLUS



- Heavy duty die-cast aluminum housing
- 10,110 to 13,077 lm / 80 & 100 W
- Frosted UV stabilized polycarbonate diffuser
- Energy-saving, high bay solution



TEMPESTA™ LED



- Up to 70 ft spacing on-center
- Up to 1,384 lm in emergency
- Up to 1,990 lm in AC mode (4000K CCT)
- Autotest and 120-347VAC input standard



FTZ COMBO



- Heavy duty die-cast construction
- Wall, ceiling or end mounting
- Impact resistant polycarbonate cover
- Enclosed & protected MR16 lamps



BS100LED-PG (2', 4')



- UV stabilized polycarbonate lens and housing
- 3,400 to 9,800 lm / 30W to 70W
- Integral emergency and occ sensor available
- Multiple mounting configurations



PACO AQUA EXIT



- High impact, thermoplastic housing
- Corrosion and UV resistant polycarbonate shield
- Universal mounting and removable chevrons
- 3W Remote capable UL924 wet location exit



PLURALUCE® WP



- Compact (7" sq), durable aluminum construction
- Emergency option achieves up to 60 ft spacing
- 4000K LEDs deliver 782 - 845 lm
- Symmetric & assymmetric optics included





WAREHOUSE | INDUSTRIAL



LIGHTING NEEDS:

- Occupancy sensors to lower energy costs
- Long lamp life to reduce maintenance



QUESTIONS YOU SHOULD ASK:

- What is the rated lamp life?
- Are sensors available and easily adjusted?
- Are multiple distribution patterns available?

VALORE (2', 4')



- Field adjustable CCT: 3000/ 4000/ 5000K
- 12,500 to 45,700 lm / 100W to 325W
- Wireless lighting control, 0-10V dimming
- Emergency and occ sensor options available



ACCIAIO® BX920LED (4')



- Robust steel housing and polycarbonate lens
- 7,000 to 12,000 lm/ 50 & 80W
- Integral emergency option
- Sensor, control & mounting options



BS101LED-ECO



- UV stabilized polycarbonate construction
- 4,744 to 7,919 lm / 35W & 55W
- Occ sensor and integral emergency options
- Multiple mounting configurations



FORMA (FME)



- Durable die-cast construction
- Universal mounting
- Low profile with a brushed aluminum face
- Many options including special wording



NUVOLA



- Durable die-cast aluminum construction
- 10-40K lm / 90 to 300W/ 120-277V, 347-480V
- 60°, 90°, 120° Beam distributions
- Multiple mounting configurations & LOGICA controls



ECCO LUNA LED



- Durable polycarbonate construction
- Fully enclosed heads protect positioning
- Surface wall or ceiling mount
- Up to 80ft spacing from 932 lm (5000K CCT)



STRIPLED (4', 8')



- 3500K, 4000K & 5000K CCT options
- 3,300 to 9,200 lm / 24 to 68W
- 0-10V Dimming std, wireless control option
- Emergency and wire guard options



INDUSTRIAL | HAZARDOUS AREAS



LIGHTING NEEDS:

- Know the exact type of environment the products are going into
- Special classifications may be required
- Expect longer delivery times for hazardous rated products

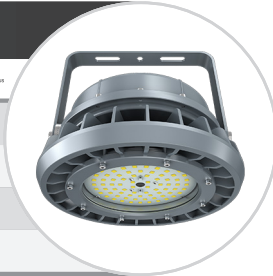
QUESTIONS YOU SHOULD ASK:

- Does the product have the correct certifications for this application?
- What is the products warranty?
- Is the product maintenance friendly?

CASTEX 300/310



- 300: Class 1, Division 2 / 310: Class 1/Division 1
- Working temp -40°C to +55°C / -40°C to +60°C
- 300: 8K to 56K lm / 310: 8K to 35K lm (5000K CCT)
- Marine Grade UL 1598A



PLURALUCE® HZ



- Compact, durable aluminum construction
- Class I, Division 2, Groups A-D
- Symmetrical & asymmetrical optics included
- 4000K LEDs deliver up to 845 lm & 60' spacing



CASTEX 400 (2', 4')



- Class I, Division 2, Groups A, B, C, D
- High impact-resistant vapor tight
- Stainless steel body and polycarbonate lens
- 4,200 to 8,400 lm with emergency option



ROBUSTO® COMBO



- Class I, Division 2, Groups A-D
- Durable fiberglass construction
- Single face, wall mount, universal chevrons
- Many options including custom wording are available



CASTEX 510/600



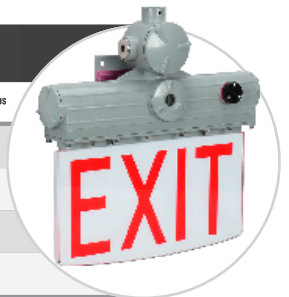
- 510: Class I, Division 2 / 600: Class I, Division 1
- Working temp -40°C to +60°C
- 510: 5K - 12K lm / 600: 5K - 14K lm (5000K CCT)
- Marine Grade UL 1598A



CASTEX 700



- Class 1, Division 1
- Working temp -40°C to +60°C
- Die-cast copper-free aluminum housing
- Special wording available



CASTEX



- Class 1, Division 2, Groups A, B, C, D
- Working Temp: -40°C to +50°C
- 3K to 20K lm, 3000K, 4000K & 5000K CCT
- Wide beam distribution



BRAVADO® HZ



- Heavy duty die-cast aluminum construction
- Up to 70 ft on center spacing
- Class I, Division 2 / Class II, Division 1 & 2
- Compact, low profile aesthetic





COMMERCIAL





LIGHTING NEEDS:

- Know what light levels you need
- Understand the hours of operations required
- Aesthetics play a major role in the lighting design



QUESTIONS YOU SHOULD ASK:

- Does my luminaire meet the light level requirements?
- Is maintenance ease an important factor?
- Does this application require a specific CRI?

PLANEX® (1'X4')(2'X2')(2'X4')



- Lumen and 3500/ 4000/ 5000K CCT selectable
- 1X4 & 2X2: 2,300 to 4,300 lm
- 2X4: 3,300 to 5,200 lm (Avail Q2 2023)
- Multiple mounting configurations



VALORE (2', 4')



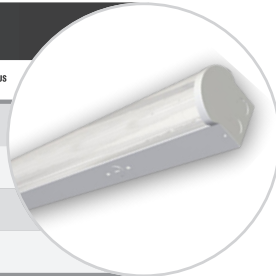
- Field adjustable CCT: 3000/ 4000/ 5000K
- 12,500 to 45,700 lm / 100W to 325W
- Wireless lighting control, 0-10V dimming
- Emergency and occ sensor options available



STRIPLED (4', 8')



- 3500K, 4000K & 5000K CCT options
- 3,300 to 9,200 lm / 24 to 68W
- 0-10V Dimming std, wireless control option
- Emergency and wire guard options



NUVOLA



- Durable die-cast aluminum construction
- 10-40K lm / 90 to 300W / 120-277V, 347-480V
- 60°, 90°, 120° Beam distributions
- Multiple mounting configuration & LOGICA controls



BS101LED-ECO



- UV stabilized polycarbonate construction
- 4,744 to 7,919 lm / 35W & 55W
- Occ sensor and integral emergency options
- Multiple mounting configurations



ECCO LUNA LED



- Durable polycarbonate construction
- Fully enclosed heads protect positioning
- Surface wall or ceiling mount
- Up to 80ft spacing from 932 lm (5000K CCT)



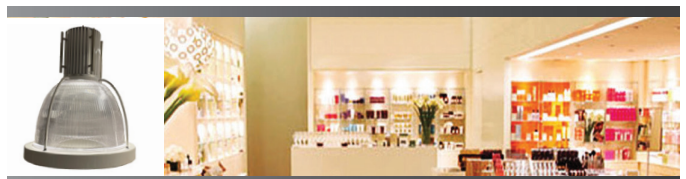
BS101LED-ECO-E



- 100% UV stabilized polycarbonate construction
- 35W: 4,090 lm @ 4000K CCT, 4,156 lm @ 5000K
- Integral 90 mins emergency battery options
- Multiple mounting configurations



NEW DRACO® COMING SOON





BBX



- Adjustable LED heads deliver up to 125' spacing
- Remote capable & autotest options
- Maintenance-free LiFePO4 battery
- Wall, pendant, i-beam and ceiling mount



CURVA



- Economical architectural edge-lit solution
- Surface or recessed mount
- Autotest standard (SA models)
- Pivot design for install on ceiling, wall or sloped surface



BRUNO



- Die-cast aluminum housing (white finish std)
- Universal edge-lit panel (single, double, chevrons)
- Universal mounting: surface, recessed, end
- Options including custom wording available



PLURALUCE® RECESSED SQUARE



- Clean modern look with seamless trim
- LEDs deliver 826 to 845 lm (4000K CCT)
- Up to 55 ft on-center spacing
- Symmetrical and assymetrical optics included



PACO PEH-T20



- Fully adjustable 1.7W LED heads
- Options: Autotest and 2.3W remote capability
- Surface wall or ceiling installation
- High impact, UV stabilized thermoplastic housing



PLURALUCE® INDOOR



- Compact, architectural aluminum housing
- LEDs deliver 782 to 845 lm (4000K CCT)
- Up to 60' on-center spacing in emergency operation
- Symmetrical & asymmetrical optics included





LIGHTING NEEDS:

- Proper light levels are important in specific areas
- Energy savings and product life
- Ease of maintenance is important



QUESTIONS YOU SHOULD ASK:

- What is the expected product life?
- How does the product mount / install?
- What energy savings features are offered?

NUVOLA



- Durable die-cast aluminum construction
- 10-40K lm / 90 to 300W / 120-277V, 347-480V
- 60°, 90°, 120° Beam distributions
- Multiple mounting configurations



SCALA (2')



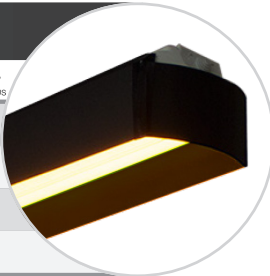
- LED lighting solutions for stairwells
- 3,900 to 7,700 lm / 30, 40 & 50W
- Integrated emergency available
- PIR occupancy sensor with bi-level dimming



TURTLE LED (2', 4')



- Fully shielded polycarbonate construction
- FWC approved, amber LED 590 nm
- Turtle-friendly lighting ideal for all coastal areas
- Emergency and multiple mounting options available



BOXLED® FLOOD



- Marine grade aluminum housing
- 15K to 26K lm / 150W to 230W
- Adjustable yoke for precise aiming
- 3G Vibration rated



VALORE (2', 4')



- Field adjustable CCT: 3000/ 4000/ 5000K
- 12,500 to 45,700 lm / 100W to 325W
- Wireless lighting control, 0-10V dimming
- Emergency and occ sensor options available



PLANEX® (1'X4')(2'X2')(2'X4')



- Lumen and 3500/ 4000/ 5000K CCT selectable
- 1X4 & 2X2: 2,300 to 4,300 lm
- 2X4: 3,300 to 5,200 lm (Avail Q2 2023)
- Multiple mounting configurations



SWL (4')



- Lumen & CCT selectable
- Up to 6,500 lm
- Optional occ sensor & battery backup
- DLC premium qualified for stairwells





HOSPITALITY NEEDS

- Visually appealing
- Easy installation
- Low maintenance
- Longevity
- Mounting Options



OL2 Plus



- Architectural edge-lit exit w/ thin die-cast trimplate
- Designed for surface, recessed and end mount
- Panels with rounded corners & selectable chevrons
- Many options including custom wording available



CURVA



- Economic architectural edge-lit solution
- Surface or recessed mount
- Autotest standard (SA models)
- Pivot design for install on ceiling, wall, or sloped surface



TEMPESTA™ LED



- Up to 70 ft spacing on-center
- Up to 1,384 lm in emergency
- Up to 1,990 lm in AC mode (4000K CCT)
- Autotest and 120-347VAC input standard



CURVA COMBO



- Architectural edge-lit exit combo solution
- Surface or recessed mount
- Autotest standard, 3W remote option
- Adjustable recessed LED lamps deliver up to 66' spacing





LIGHTING NEEDS:

- Durability is critical in school environments
- Light level requirements must be reached
- Ease of maintenance is very important



QUESTIONS YOU SHOULD ASK:

- Is the product vandal resistant?
- How does the product mount / install?
- What energy savings features are offered?

PLANEX® (1'X4')(2'X2')(2'X4')



- Lumen and 3500/ 4000/ 5000K CCT selectable
- 1X4 & 2X2: 2,300 to 4,300 lm
- 2X4: 3,300 to 5,200 lm (Avail Q2 2023)
- Multiple mounting configurations



BOXLED® 736



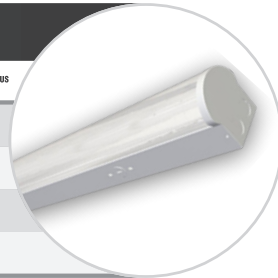
- Die-cast aluminum housing
- 15,000 to 26,000 lm / 150W, 230W
- Multiple distributions and mounting
- Egress, controls and high voltage options



STRIPLD (4', 8')



- 3500K, 4000K & 5000K CCT options
- 3,300 to 9,200 lm / 24 to 68W
- 0-10V Dimming std, wireless control option
- Emergency and wire guard options



NUVOLA



- Durable die-cast aluminum construction
- 10-40K lm / 90 to 300W/ 120-277V, 347-480V
- 60°, 90°, 120° Beam distributions
- Multiple mounting configurations & LOGICA controls



BS100LED (2', 4')



- 100% polycarbonate construction
- 3,900 to 11,500 lm / 30W to 70W
- L70 > 60,000 hrs
- Multiple mounting configurations



ACCIAIO® BX910-LED (2', 4')



- 24ga steel housing with PC diffuser
- 2,600 to 8,800 lm / 20 to 60W
- L70 > 100,000 hrs
- Multiple sensor and mounting options



SWL (4')



- Lumen & CCT selectable
- Up to 6,500 lm
- Optional occ sensor & battery backup
- DLC premium qualified for stairwells





FTZ + Plus



- Heavy duty die-cast aluminum construction
- Impact resistant polycarbonate cover
- Architectural high-abuse sign
- Universal mounting- ceiling, wall, end



ACCIAIO® BX9102SE (2')



- Emergency 1,700 lm, up to 80' spacing (18' ht)
- Durable 24 gauge steel housing
- Polycarbonate diffuser std, tempered glass option
- 180-degree adjustable mount for ceiling or wall



FTZ COMBO



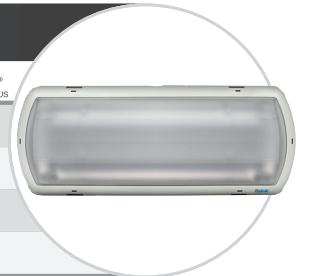
- Heavy duty die-cast construction
- Wall, ceiling or end mounting
- Impact resistant polycarbonate cover
- Enclosed & protected MR16 lamps



TEMPESTA™ LED ECO



- Up to 42 ft spacing on-center
- 1309 lm AC/ 995 lm EM
- 90 min UL924 emergency duration
- 120-347VAC input std, AT optional



EVR



- Durable 16 gauge steel housing and faceplate
- Polycarbonate shield between frame & faceplate
- Tamper resistant screws standard
- Full length canopy for ceiling or end mounting



ECCO LUNA LED



- Durable polycarbonate construction
- Fully enclosed heads protect positioning
- Surface wall or ceiling mount
- Up to 80ft spacing from 932 lm (5000K CCT)





LIGHTING NEEDS:

- You must know occupancy time of day and duration
- Understand the lighting code requirements
- Energy savings in office environments is critical



QUESTIONS YOU SHOULD ASK:

- How many hours a day is the office occupied?
- Are there areas that are often unused or used only when scheduled?
- Who handles the maintenance in the office?

PLANEX® (1'X4')(2'X2')(2'X4')



- Lumen and 3500/ 4000/ 5000K CCT selectable
- 1X4 & 2X2: 2,300 to 4,300 lm
- 2X4: 3,300 to 5,200 lm (Avail Q2 2023)
- Multiple mounting configurations



PLURALUCE® RECESSED



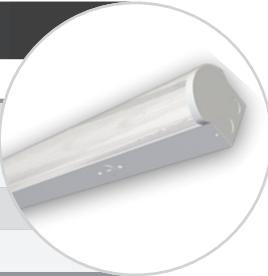
- Low profile trim for seamless fit in ceiling
- LEDs deliver 782 to 845 lm (4000K CCT)
- Up to 60 ft spacing in emergency operation
- Symmetrical & asymmetrical optics included



STRIPLLED (4', 8')



- 3500K, 4000K & 5000K CCT options
- 3,300 to 9,200 lm / 24 to 68W
- 0-10V Dimming std, wireless control option
- Emergency and wire guard options



CURVA COMBO



- Architectural edge-lit exit combo solution
- Surface or recessed mount
- Autotest standard, 3W remote option
- Adjustable recessed LED lamps deliver up to 66' spacing



PLURALUCE® INDOOR



- Compact, architectural aluminum housing
- LEDs deliver 782 to 845 lm (4000K CCT)
- Up to 60' on-center spacing in emergency operation
- Symmetrical & asymmetrical optics included



BBX



- Adjustable LED heads deliver up to 125' spacing
- Remote capable & autotest options
- Maintenance-free LiFePO4 battery
- Wall, pendant, i-beam and ceiling mount





STORAGE | COMMERCIAL



LIGHTING NEEDS:

- Overhead and wide spread lighting are essential
- On/off sensors are needed
- Lights must be durable and serviceable



QUESTIONS YOU SHOULD ASK:

- What type of sensor is needed?
- Is emergency back-up important?
- Is there a standard color temperature?

TEMPESTA™ LED



- Up to 70 ft spacing on-center
- Up to 1,384 lm in emergency
- Up to 1,990 lm in AC mode (4000K CCT)
- Autotest and 120-347VAC input standard



CURVA



- Economic architectural edge-lit solution
- Surface or recessed mount
- Autotest standard (SA models)
- Pivot design for install on ceiling, wall or sloped surface

NUVOLA



- Durable die-cast aluminum construction
- 10-40K lm / 90 to 300W/ 120-277V, 347-480V
- 60°, 90°, 120° Beam distributions
- Multiple mounting configurations & LOGICA controls

PLURALUCE® INDOOR



- Compact, architectural aluminum housing
- LEDs deliver 782 to 845 lm (4000K CCT)
- Up to 60' on-center spacing in emergency operation
- Symmetrical & asymmetrical optics included

BS101LED-ECO-E



- 100% UV stabilized polycarbonate construction
- 35W: 4,090 lm @ 4000K, 4,156 lm @ 5000K
- Integral 90 mins emergency battery options
- Multiple mounting configurations

BBX



- Adjustable LED heads deliver up to 125' spacing
- Remote capable & autotest options
- Maintenance-free LiFePO4 battery
- Wall, pendant, i-beam and ceiling mount

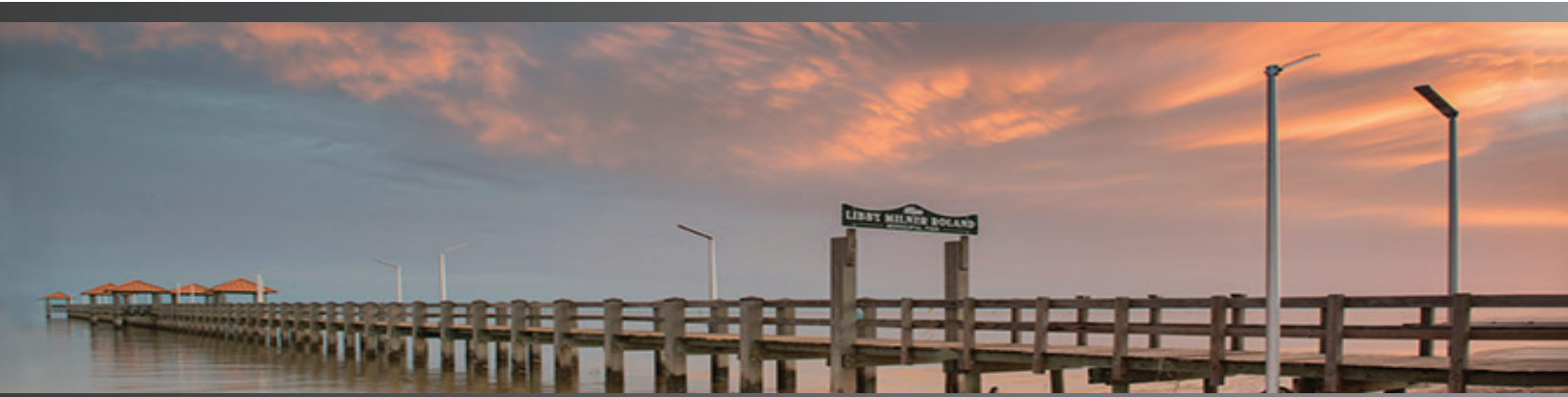
VALORE (2', 4')



- Field adjustable CCT: 3000/ 4000/ 5000K
- 12,500 to 45,700 lm / 100W to 325W
- Wireless lighting control, 0-10V dimming
- Emergency and occ sensor options available



EXTERIOR



EXTERIOR | PATHWAY SIGNAGE SITE AREA



LIGHTING NEEDS:

- You must know the environment where the product is being installed
- Easy maintenance of exterior luminaires is important
- Know the hours of operation that the luminaires will be running

QUESTIONS YOU SHOULD ASK:

- What is the environment like that the luminaires will be installed in?
- Is the luminaire easily accessible?
- Can people come in direct contact with the luminaire?

LUCE SOLARE



- Solar powered area lighting family (5 sizes)
- 1,630 to 8,150 lm (5700K CCT)
- Low profile with integral solar panel and battery
- Includes PIR sensor and 3 operating modes

BOXLED® FLOOD



- Marine grade aluminum housing
- 15K to 26K lm / 150W to 230W
- Adjustable yoke for precise aiming
- 3G Vibration rated

BS400 LED



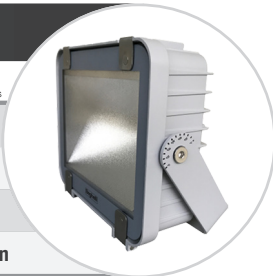
- Low profile, durable die-cast housing
- 3,500 to 7,200 lm / 30, 45, 60W
- UV stabilized, low glare frosted lens
- Easy installation in multiple mounting configurations

MURO



- Low-profile emergency LED wallpack
- Photocontrol with optional PIR sensor
- Up to 60 ft on-center spacing
- Operating temperature -25°C to +50°C

BOXLED MINI



- 3G rated, die-cast aluminum construction
- Low glare, tempered glass lens
- 2,084 to 4,387 lm / 20 to 40W
- Field changeable symmetric/ asymmetric distribution

TURTLE LED (2', 4')



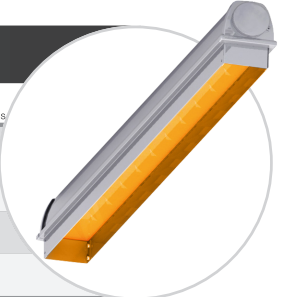
- Fully shielded polycarbonate construction
- FWC approved, amber LED 590 nm
- Turtle-friendly lighting ideal for all coastal areas
- Emergency and multiple mounting options available

MULTIPURPOSE LUMINAIRES



- Die-cast aluminum housing in bronze finish
- 1,600 to 36K lm / 15 to 280W
- Ideal for area and flood lighting
- Multiple mounting options

ACCIAIO®ECO AMBER (4')



- Fully shielded steel housing & glass lens
- FWC approved, amber LED 590 nm
- Turtle-friendly, ideal for all coastal areas
- Wireless controls, sensors and mounting options



HORTICULTURAL





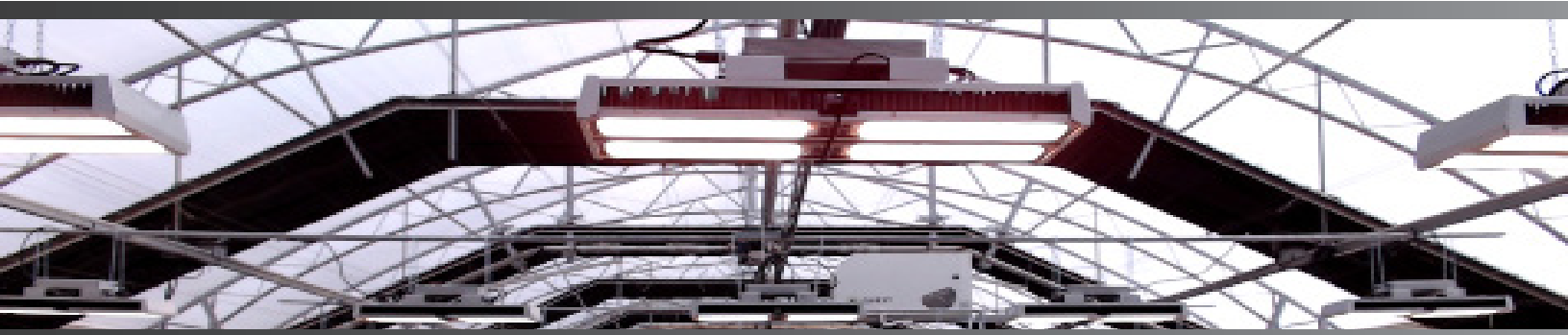
LIGHTING NEEDS:

- Efficient design and adequate light distribution
- High or low intensity levels depending on the plant species
- Vertical, tiered or single grid installation configurations

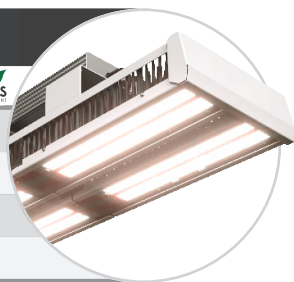


QUESTIONS YOU SHOULD ASK:

- Is your application for greenhouse, indoor or specialty?
- Do you need an optimized system layout for optimal light levels?
- Are you looking for a full white spectrum, cool white spectrum or specialty spectrum? Know before you grow!



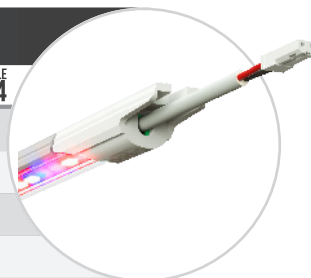
FIORE TOPLIGHT COMBO



- 600W & 300W models; Up to 1680 $\mu\text{mol}/\text{sec}$
- Extended white spectrum
- Multiple mounting configurations
- Ideal for clone, veg and flowering stages



FIORE SLIM (2', 4')



- 2': 7.5 & 12W; 4': 23 & 26W; Up to 47 $\mu\text{mol}/\text{sec}$
- Natural indoor or cool white spectrums
- Designed for micropropagation
- Slim aluminum housing with remote power supply

FIORE FORTEZZA®



- Heavy-duty, die-cast aluminum construction
- Plant-safe 530nm green LED letters
- 1/8 inch impact-resistant polycarbonate shield
- Perforated chevrons allow for on-site selection

FIORE BS100LED GREEN (2', 4')



- 100% polycarbonate construction
- 3,800 lm @ 45w, 5,050 lm @ 60W
- Multiple mounting configurations
- Plant-safe 530 nm green LEDs for maintenance lighting

DISCLAIMER

Beghelli USA is constantly developing and improving the product range and performance. All descriptions, illustrations, drawings and specifications are up to date. Beghelli reserves the right to change specifications without prior notification or public announcement.

Publication date: January 2023

GUIDE 2023

BEGHELLI USA

**3810 Executive Way
Miramar, Florida
33025**

Tel.: 954.442.6600

**2023
Beghelli USA
All Rights Reserved**



APPLICATION