

Gira Sole G2

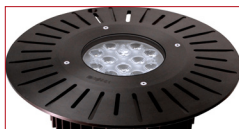
2nd generation

4 times the lumen output, 50% more wattage and a lower price!

EXTERNAL LENS: 12.8mm clear tempered glass, has a 200psi drive over rating.

high performance white LED's: 4100K and 5700K, RGB, single color or custom colors available

TOP PLATES: solid taper top plate shown (standard), custom design available



perforated taper

HOUSING: extruded aluminum alloy with hard anodized finish



feature

Benefit

- 4 different distributions

- Narrow 10°
- Medium 20°
- Wide 36°
- No optical lens < 40°

- Low profile design

- Ideal for tree grates
- two different installations: remote or local

- 36W

- Energy saving

- Tempered glass diffuser

- Impact resistant
- 12.8mm clear tempered glass with a 200psi drive over rating
- Will not turn yellow over time

- High efficiency LED's Powered by Samsung

- 1821-2581 lumens
- LM70 rated for 85,000 hours

- Custom top plate & 7.5" housing

- Ideal for HID retrofit kit applications
- perforated top plate for greater heat dissipation

... features + benefits



LED
IN-GRADE
Wet/IP65



Meets
BAA



The **GIRA SOLE** is ideal for:

- landscapes
- walkways
- public areas
- campus
- parks
- columns
- wall washes
- outdoor statues
- tree lighting
- flag poles



ENERGY COMPARISON CHART

LAMP	EFFICACY	CONSUMPTION WATTAGE	LUMEN OUTPUT	CRI	Beam angle	AMBIENT TEMP	L70 (hrs.)
GIRA SOLE-4100K-MEDIUM	51.02	35.69	1821	80+	22.6°	24.9°C	85,000
GIRA SOLE-4100K-WIDE	52.5	35.65	1871.7	80+	37.7°	25.5°C	85,000
GIRA SOLE-4100K-NARROW	57.34	35.91	2059	80+	10.7°	25.3°C	85,000
GIRA SOLE-5700K-MEDIUM	65.03	35.47	2306.6	70+	23.3°	24.6°C	85,000
GIRA SOLE-5700K-WIDE	68.35	35.4	2419.6	70+	31.9°	25.0°C	85,000
GIRA SOLE-5700K NARROW	72.95	35.38	2581	70+	11.6°	25.2°C	85,000