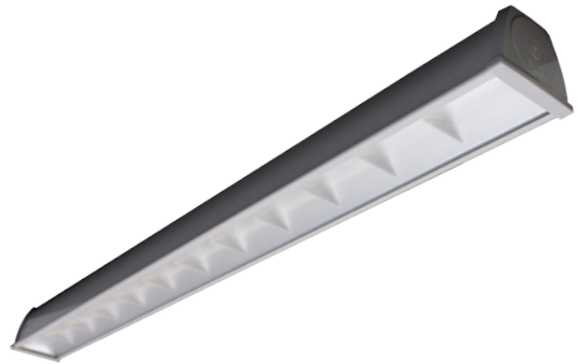




BX910LED-ECO

- **BX910LED-ECO** is DesignLights Consortium[®] qualified for Direct Linear Ambient Luminaires, and is the evolution of a luminaire with upgradeable technology.
- Micro-prismatic, tempered glass diffuser provides performance and reduced glare.
- Specially designed terminal compartment and polycarbonate end cap allows easy access to wiring for convenient and tool-free installation, as well as effortless LED driver replacement.
- **HOUSING:** The housing uses 24 gauge rolled steel, making it a great option where light pollution is a concern.
- **LUMENS:** **LO:** 3543 up to 3765 lm
HO: 5180 up to 5502 lm
- **OPERATING TEMP:**
HT (AC Only) -40°C to 40°C (-40°F to 104°F).
SA (AC & Emergency) 0°C to 35°C (32°F to 95°F).
- **WEIGHT:** 9 lbs / 4.08 kg



APPLICATION: The BX910LED-ECO is a versatile luminaire ideal for a wide range of applications including: warehouses, parking decks, breezeways, canopies, service corridors, loading docks, farms, car washes and a great option where light pollution is a concern.

CONFIGURATIONS

MODEL	LENGTH	OPERATION	OUTPUT	COLOR TEMP	INPUT	MOUNTING	OPTIONS ⁶
BX910LED-ECO	4 (ft)	HT (AC only)	LO	WT30 ² (3000K)	120V-277V	AC ³ (aviation cable)	D (dali)
		SA ¹ (AC & EM)	HO	WT35 (3500K)	347V	CH ⁴ (chain hang kit)	EOS (external occupancy sensor)
				WT40 (4000K)		PK ⁵ (pendant kit)	EOSL ⁷ (external occupancy sensor - LOGICA)
				WT50 (5000K)		PM (pivot mount)	FP (fuse protection - 3A)
						TM ⁴ (trunnion mount)	GL (glass lens)
							NODL ⁷ (integrated node & sensor - LOGICA)
							PC (polycarbonate lens)
							SP (surge protection - 10KA)
							W ⁸ (white housing)

NOTE 1: Emergency pack; 120/277V; 10W, 1217 lumens.

NOTE 2: Contact factory for lead time.

NOTE 3: Specify length for AC:50", 72", 100", 150", 250" for other specify.

NOTE 4: CH, TM options specify length

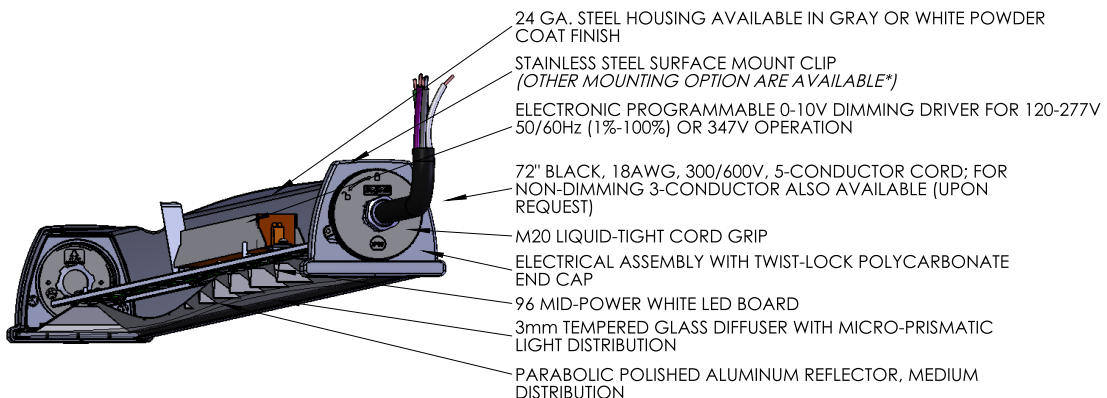
NOTE 5: Specify length for PK:12", 24", 48" for other specify.

NOTE 6: Gray powder coat finish is standard.

NOTE 7: Logica (Beghelli wireless and powerless control solutions). Contact factory for more details.

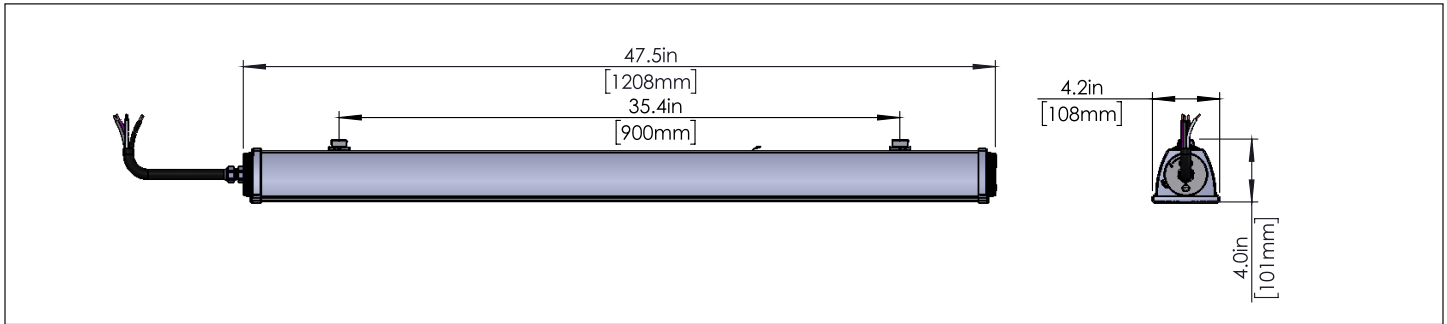
NOTE 8: Contact factory.

TECHNICAL INFORMATION

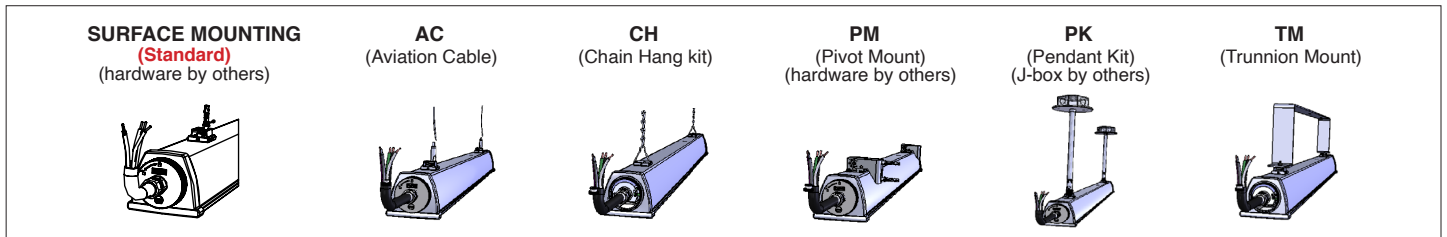


FOR DETAILS PLEASE SEE LIGHTING CONTROL SOLUTION CONFIGURATIONS

DIMENSIONS



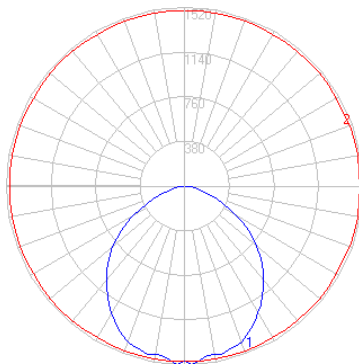
MOUNTING OPTIONS



DISTRIBUTION

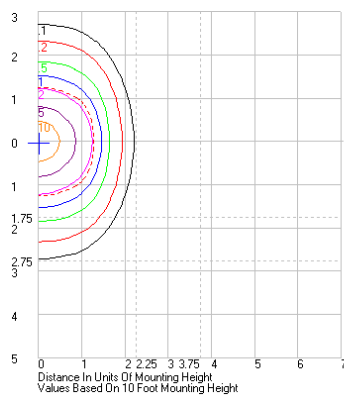
BX910LED-ECO-4HT-LO-WT40-120-277V

POLAR CURVES



Characteristics	
Electronic driver	
LED 4000°K	
Lumens Per Lamp	45,79 (96 lamps)
Total Lamp Lumens	4395,84
Luminaire Lumens	3654
Total Luminaire Efficiency	83 %
Luminaire Efficacy Rating (LER)	122
Total Luminaire Watts	30
Ballast Factor	1,00
CIE Type	Direct
Spacing Criterion (0-180)	1,24
Spacing Criterion (90-270)	1,34
Spacing Criterion (Diagonal)	1,36

ISOLINES



Zonal Lumen Summary

Zone	Lumens	%Lamp	%Fxt
0-20	553,15	12,60	15,10
0-30	1183,17	26,90	32,40
0-40	1928,24	43,90	52,80
0-60	3270,02	74,40	89,50
0-80	3642,69	82,90	99,70
0-90	3653,96	83,10	100,00
10-90	3513,56	79,90	96,20
20-40	1375,1	31,30	37,60
20-50	2133,75	48,50	58,40
40-70	1625,02	37,00	44,50
60-80	372,66	8,50	10,20
70-80	89,42	2,00	2,40
80-90	11,27	0,30	0,30
90-110	0,00	0,00	0,00
90-120	0,00	0,00	0,00
90-130	0,00	0,00	0,00
90-150	0,00	0,00	0,00
90-180	0,00	0,00	0,00
110-180	0,00	0,00	0,00
0-180	3653,96	83,10	100,00

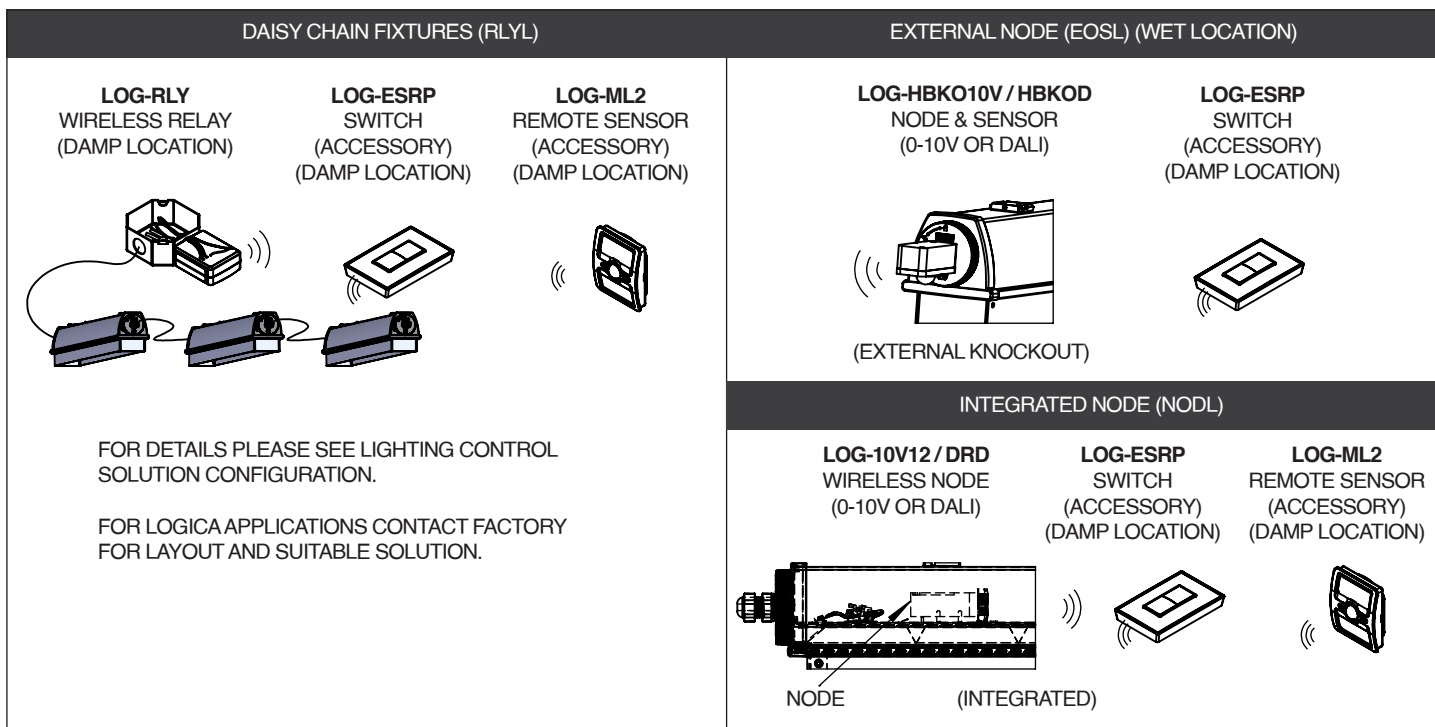
Total Luminaire Efficiency = 83,10%

BX910LED-ECO

ENERGY CHART

MODEL	EFFICACY (Lumens/Watts)	CONSUMPTION WATTAGE (W)	LUMEN OUTPUT (LM)	CRI	L70 (hrs.)	L80 (hrs.)
BX910LED-ECO-4HT-LO-WT35-120-277V	118	30	3543	>80	>60,000	>50,000
BX910LED-ECO-4HT-LO-WT40-120-277V	122	30	3654	>80	>60,000	>50,000
BX910LED-ECO-4HT-LO-WT50-120-277V	125	30	3765	>80	>60,000	>50,000
BX910LED-ECO-4HT-HO-WT35-120-277V	104	50	5180	>80	>60,000	>50,000
BX910LED-ECO-4HT-HO-WT40-120-277V	107	50	5341	>80	>60,000	>50,000
BX910LED-ECO-4HT-HO-WT50-120-277V	110	50	5502	>80	>60,000	>50,000

LOGICA (WIRELESS & POWERLESS LIGHTING CONTROL SOLUTIONS)



■ **WARRANTY:** 7 year warranty, see website for full warranty details.