

Type: _____

Project: _____

SPYDER® MINI-IP67

LED | WET | IP67



SMALED-IP67

- **MOUNTING:** 360° fully adjustable mounting bracket
- **HOUSING:** high grade single piece extruded aluminum alloy with anodized or hard anodized finish.
- **DIFFUSER:** fully gasketed, 360° impact resistant, polycarbonate enclosure, 1/16" thick
- Standard lengths available: 2FT, 4FT and 6FT. Other lengths available 1FT, 3FT and 5FT - special order.



APPLICATION: The SPYDER® MINI IP67 is ideal for outdoor applications including: signs, cove lighting, wall washing, under railings. Sanitation listed ideal for food prep and processing.

CONFIGURATIONS

MODEL	LENGTH	COLOR TEMP	LENS	OPERATION	MOUNTING	OPTIONS
SMALED-IP67	2 (2 ft)	WT35 (3500K)	NOL (no optical lens)	24VDC ²	AC ³ (aviation cable)	AB ⁵ (anodized black)
	4 (4 ft)	WT41 (4100K)			SM ⁴ (surface mount)	AC (anodized clear)
	6 (6 ft)	WT57 (5700K)				HAB (hard anodized black)
	custom ¹					HCA (hard clear anodized)
						CAC ⁶ (custom anodized color)

NOTE 1: Lengths available 1FT, 3FT and 5FT - special order.

NOTE 2: Remote power supply required, contact factory & see next page.

NOTE 3: Specify length: 50" 72", 100", 150", 250" fully adjustable.

NOTE 4: Surface mount is standard.

NOTE 5: Anodized black is standard.

NOTE 6: Custom colors must be specified.

HOUSING:

- High grade single piece extruded aluminum alloy with anodized or hard anodized finish.

ELECTRICAL:

- Power Supply: Class II remote power supplies required, must be specified based on layout, contact factory.

POWER LINE/FEED:

- Single white color : 36" 18AWG two conductor black cord.

LED LIGHT ENGINE:

- High performance white LED available in standard color temperatures 3500K (warm), 4100K (daylight), 5700K (cool).

SANITATION LISTED (SL):

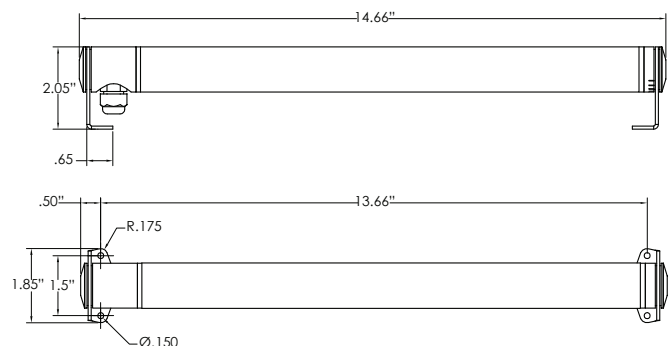
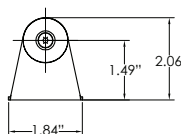
- Standard on all SMALED-IP67.
- Equivalent to the NSF standard 2. Meets the rigorous sanitation, electrical safety and performance standards for food safe applications.

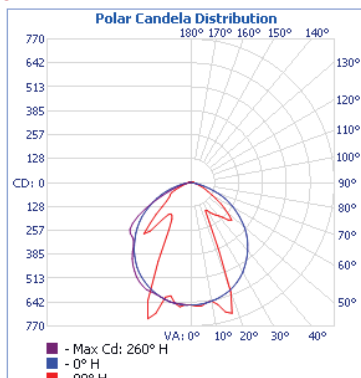
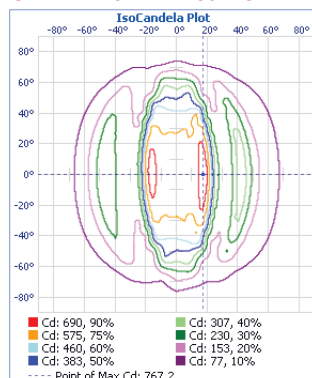
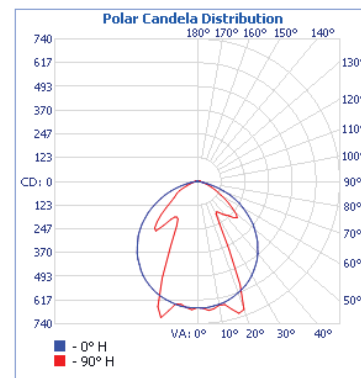
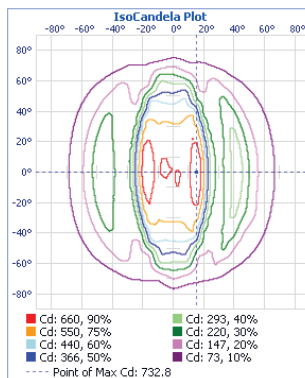
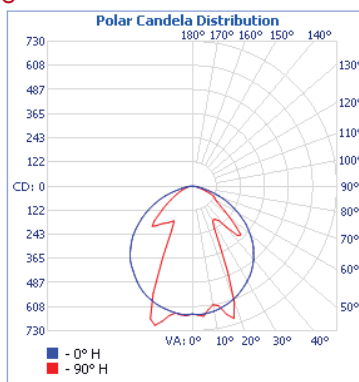
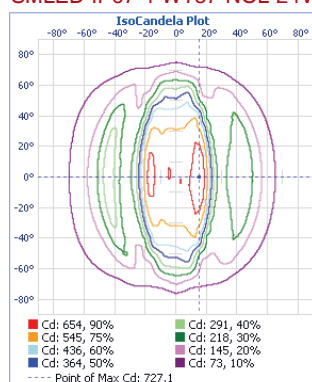
MOUNTING:

- Surface Mount (SM) is standard.
- Aviation Cable (AC). AC length must be specified: 50", 72", 150" 250" or custom, fully adjustable.

WATTAGE: 4.8W per foot

WARRANTY: 5 year warranty, see web-site for full warranty details.



SML-IP67-4-WT30-NOL-24VDC

SML-IP67-4-WT41-NOL-24VDC

SML-IP67-4-WT57-NOL-24VDC

ENERGY CHART

MODEL	EFFICACY (lm/W)	CONSUMPTION WATTAGE	LUMENS	CRI	BEAM ANGLE	AMBIENT TEMP	L70
SML-IP67-4-WT30-NOL-24VDC	56	23	1290	84	46°	45°C	100,000+
SML-IP67-4-WT41-NOL-24VDC	58	23	1323	83	48°	45°C	100,000+
SML-IP67-4-WT57-NOL-24VDC	58	23	1330	88	46°	45°C	100,000+