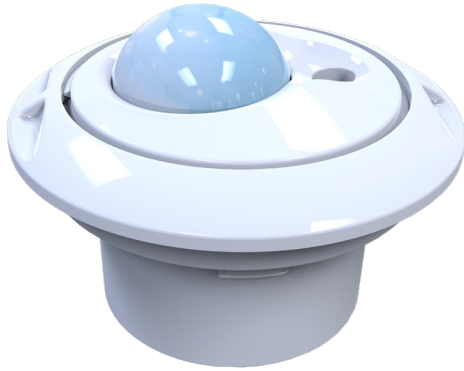


# LOG-HPML

## IN FIXTURE WIRED MOTION SENSOR

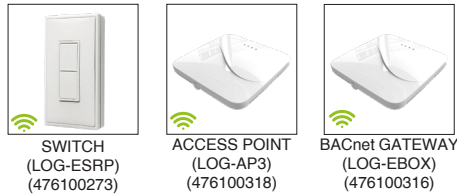
outdoor IP65 TITLE 24 TITLE 20   



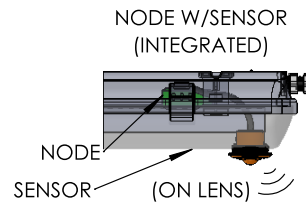
### Overview

LOG-HPML provides flexibility when it comes to incorporating the sensor into their fixture. It includes a digital LUX sensor and a PIR occupancy sensor. The two piece scenario allows for flexibility when installing into fixtures where there isn't significant room for an all-in-one option. This sensor is rated for up to 39 feet (11 meters).

### Compatible Devices



### Basic Common Application



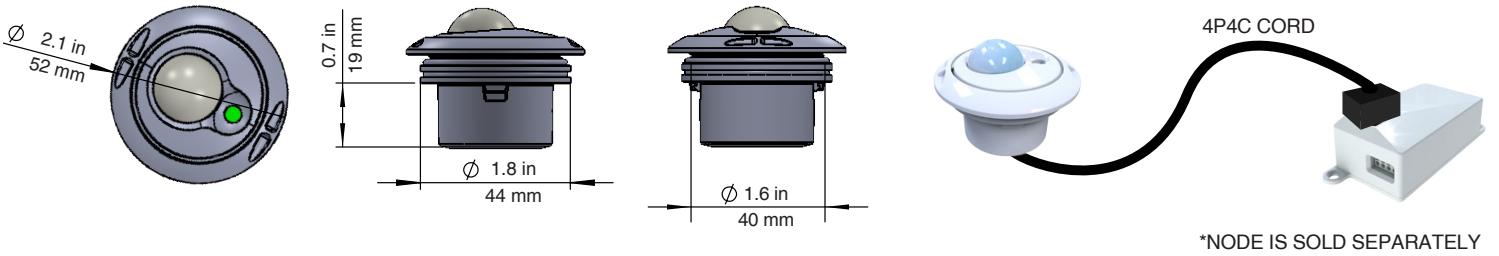
### Technical Specifications

Motion Sensing	Digital Passive IR
Detection Distance	39.4 ft (12 m)
Detection Range (Horizontal x Vertical)	102° x 92°
Ambient Light Sensing	0-94.8 FC (0-1020 LUX); PHOTO IC TYPE
Operating Temperature	32° - 140°F (0° - 60°C) - Indoor use only
Operating Power	< 1mA
Standby Power	< 1W
Wireless Range	150 ft (50 ft-150 ft typical) / 45.72 m (15.24 m - 45.72 m)
Start Up & Configuration	LOG-USB (476100295) & LOGICACONFIG
Default Setting	<ul style="list-style-type: none"> <li>100% occupied</li> <li>50% after 30 minutes of un-occupied</li> <li>Off after 60 minutes of un-occupied</li> </ul>

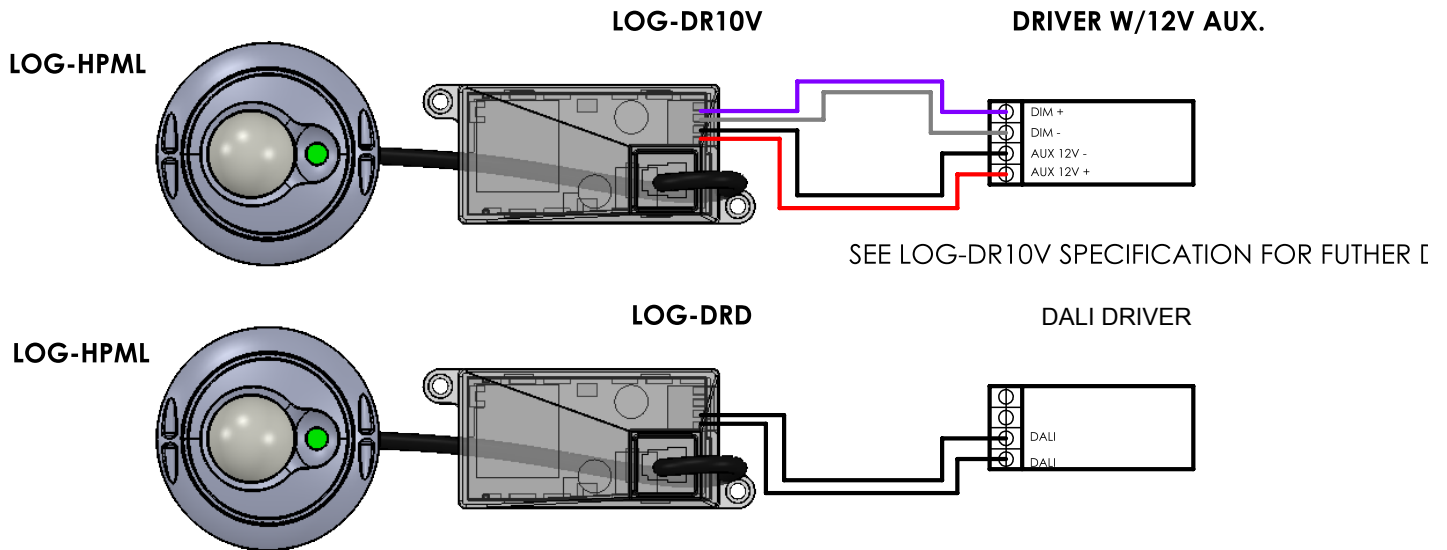
### Application Notes

BASIC		ADVANCE	
Zoning	Luminaire level lighting control	Networking	Device monitoring / Remote diagnostic
Addressable	Easy start-up & configuration	Scheduling	Personal control
Scene control		BACnet	Energy monitoring
			Restricted access

## Dimensions



## Wiring Diagram



## Detection Performance

