

**Beghelli**

**HOT  
SHEET**

**2019**

## INDEX



Tempesta LED ECO, 1



Curva, 1-2



Paco Aqua Exit, 3



Paco PEH, 3



PEH-T20, 4



Paco PX, 4



Paco Aqua Combo, 5



Paco Combo, 5



Paco Remotes, 6



PEH-T20 Remotes, 6



Nova UAC-P 800W, 6-7



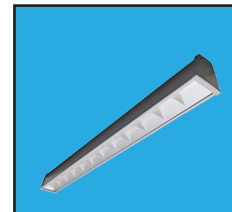
Nova UAC-P 1500-2000W, 7



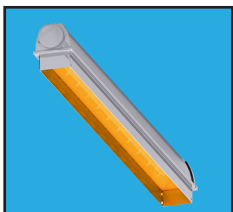
Vesta Mini, 8



Vesta Micro, 8



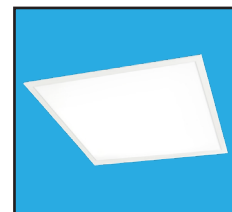
Acciaio® ECO LED, 9-10-11



Acciaio® ECO BX910LED-Amber, 11-12



LEDLUMINA BS400, 12-13-14



Planex-ECO, 15



Luce Solare BLS Series, 16-17



# TEMPESTA™ LED ECO

LED Wet IP65 IK09



| Model                             | Description   |
|-----------------------------------|---|
| TA-LED-ECO-SE-UNV                 | Ni-Mh battery, 11W, 90 minute emergency operation, LED          |
| TA-LED-ECO-SA-UNV                 | AC & EM, Ni-Mh battery, 11W, 90 minute emergency operation, LED |
| Options                           | Description   |
| AT                                | Autotest  |
| RC (recess concrete-wall/ceiling) | Recess trim plate, concrete                                     |
| RD (recess drywall-wall/ceiling)  | Recess trim plate, drywall                                      |
| TB (t-bar mount)                  | Recess trim plate, T-bar  |



# CURVA

Indoor Damp LED Edge-lit Exit



| Model            | Description   |
|------------------|---|
| AC only          |   |
| CRV-HT-LR1-CS-AL | AC only, single face, red LED, clear panel, aluminum finish   |
| CRV-HT-LR1-CS-W  | AC only, single face, red LED, clear panel, white finish      |
| CRV-HT-LR1-MS-AL | AC only, single face, red LED, mirror panel, aluminum finish  |
| CRV-HT-LR1-MS-W  | AC only, single face, red LED, mirror panel, white finish     |
| CRV-HT-LR1-WS-AL | AC only, single face, red LED, white panel, aluminum finish   |
| CRV-HT-LR1-WS-W  | AC only, single face, red LED, white panel, white finish      |
| CRV-HT-LR2-MS-AL | AC only, double face, red LED, mirror panel, aluminum finish  |
| CRV-HT-LR2-MS-W  | AC only, double face, red LED, mirror panel, white finish     |
| CRV-HT-LR2-WS-AL | AC only, double face, red LED, white panel, aluminum finish   |
| CRV-HT-LR2-WS-W  | AC only, double face, red LED, white panel, white finish      |
| CRV-HT-LG1-CS-AL | AC only, single face, green LED, clear panel, aluminum finish |
| CRV-HT-LG1-CS-W  | AC only, single face, green LED, clear panel, white finish    |

## CURVA

| Model               | Description  |
|---------------------|--|
| CRV-HT-LG1-MS-AL    | AC only, single face, green LED, mirror panel, aluminum finish                 |
| CRV-HT-LG1-MS-W     | AC only, single face, green LED, mirror panel, white finish                    |
| CRV-HT-LG1-WS-W     | AC only, single face, green LED, white panel, white finish                     |
| CRV-HT-LG2-MS-AL    | AC only, double face, green LED, mirror panel, aluminum finish                 |
| CRV-HT-LG2-MS-W     | AC only, double face, green LED, mirror panel, white finish                    |
| CRV-HT-LG2-WS-W     | AC only, double face, green LED, white panel, white finish                     |
| <b>AC &amp; EM</b>  |  |
| CRV-SA-LR1-CS-AL-AT | Ni-Cd battery, single face, red LED, clear panel, aluminum finish, autotest    |
| CRV-SA-LR1-CS-W-AT  | Ni-Cd battery, single face, red LED, clear panel, white finish, autotest       |
| CRV-SA-LR1-WS-W-AT  | Ni-Cd battery, single face, red LED, white panel, white finish, autotest       |
| CRV-SA-LR1-WS-AL-AT | Ni-Cd battery, single face, red LED, white panel, aluminum finish, autotest    |
| CRV-SA-LR1-MS-AL-AT | Ni-Cd battery, single face, red LED, mirror panel, aluminum finish, autotest   |
| CRV-SA-LR2-MS-AL-AT | Ni-Cd battery, double face, red LED, mirror panel, aluminum finish, autotest   |
| CRV-SA-LR2-MS-W-AT  | Ni-Cd battery, double face, red LED, mirror panel, white finish, autotest      |
| CRV-SA-LR2-WS-W-AT  | Ni-Cd battery, double face, red LED, white panel, white finish, autotest       |
| CRV-SA-LR2-WS-AL-AT | Ni-Cd battery, double face, red LED, white panel, aluminum finish, autotest    |
| CRV-SA-LG1-CS-AL-AT | Ni-Cd battery, single face, green LED, clear panel, aluminum finish, autotest  |
| CRV-SA-LG1-CS-W-AT  | Ni-Cd battery, single face, green LED, clear panel, white finish, autotest     |
| CRV-SA-LG1-WS-W-AT  | Ni-Cd battery, single face, red LED, white panel, white finish, autotest       |
| CRV-SA-LG1-MS-AL-AT | Ni-Cd battery, single face, green LED, mirror panel, aluminum finish, autotest |
| CRV-SA-LG2-MS-AL-AT | Ni-Cd battery, double face, green LED, mirror panel, aluminum finish, autotest |
| CRV-SA-LG2-MS-W-AT  | Ni-Cd battery, double face, green LED, mirror panel, white finish, autotest    |
| CRV-SA-LG2-WS-W-AT  | Ni-Cd battery, double face, green LED, white panel, white finish, autotest     |
| Options             | Description  |
| RK-W-HT             | Recessed kit, white, HT only (no holes)  |
| RK-W-SA             | Recessed kit, white, SA only (with holes)                                      |
| RK-BAL-HT           | Recessed kit, brushed aluminum, HT only (no holes)                             |
| RK-BAL-SA           | Recessed kit, brushed aluminum, SA only (with holes)                           |



# PACO AQUA EXIT

Indoor Damp Wet



| Model                             | Description  |
|-----------------------------------|--|
| PX-A-R-HT                         | AC only, red LED, universal face and mount                   |
| PX-A-G-HT                         | AC only, green LED, universal face and mount                 |
| PX-A-R-SA                         | AC & EM, red LED, universal face and mount                   |
| PX-A-G-SA                         | AC & EM, green LED, universal face and mount                 |
| PX-A-R-SA-RC                      | AC & EM, red LED, universal face and mount, remote capable   |
| PX-A-G-SA-RC                      | AC & EM, green LED, universal face and mount, remote capable |
| Options                           | Description  |
| AT                                | Autotest (not available with RC)                             |
| Compatible with PACO (PR) remotes |  |



# PACO-PEH

Indoor Damp

TITLE 20



| Model                             | Description   |
|-----------------------------------|---|
| PEH-1                             | EM only, Ni-Cd battery, 2 x 1.5W LED, universal voltage |
| Options                           | Description   |
| AT                                | Autotest  |
| B                                 | Black housing   |
| RC                                | Remote capable  |
| Compatible with PACO (PR) remotes |   |




## PEH-T20

Indoor Damp **TITLE 20** 

| Model                                | Description  |
|--------------------------------------|--|
| PEH-T20                              | Ni-Cd battery, 2 x 1.7W LED, thermoplastic, white finish, 120/277V |
| Options                              | Description  |
| AT                                   | Autotest   |
| B                                    | Black housing  |
| RC                                   | Remote capable   |
| Compatible with PEH-T20 (PS) remotes |  |



## PACO-PX

Indoor Damp **TITLE 20** 

| Model  | Description  |
|--|--|
| PX-R-HT  | AC only, red LED, universal face                         |
| PX-G-HT  | AC only, green LED, universal face                       |
| PX-R-SA  | Ni-Cd battery, red LED, universal face                   |
| PX-G-SA  | Ni-Cd battery, green LED, universal face                 |
| PX-R-HT-RC                                       | AC only, red LED, universal face, remote capable         |
| PX-G-HT-RC                                       | AC only, green LED, universal face, remote capable       |
| PX-R-SA-RC                                       | Ni-Cd battery, red LED, universal face, remote capable   |
| PX-G-SA-RC                                       | Ni-Cd battery, green LED, universal face, remote capable |
| Options  | Description  |
| B  | Black housing  |
| AT   | Autotest   |
| Compatible with PACO (PR) & PEH-T20 (PS) remotes |  |



# PACO AQUA COMBO

Indoor Damp Wet

TITLE  
20



| Model                     | Description  |
|---------------------------|--|
| PCH-A-R                   | Ni-Cd battery, red LED, universal face and mount, two 1.17W 3.6V LED heads                   |
| PCH-A-R-RC                | Ni-Cd battery, red LED, universal face and mount, two 1.17W 3.6V LED heads, remote capable   |
| PCH-A-G                   | Ni-Cd battery, green LED, universal face and mount, two 1.17W 3.6V LED heads                 |
| PCH-A-G-RC                | Ni-Cd battery, green LED, universal face and mount, two 1.17W 3.6V LED heads, remote capable |
| Options                   | Description  |
| AT                        | Autotest   |
| Compatible with PACO (PR) |  |



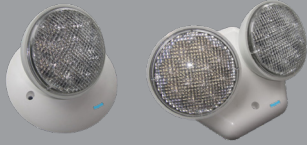
# PACO COMBO

Indoor Damp

TITLE  
20



| Model  | Description   |
|--|---|
| PCH-R-SA   | Ni-Cd battery, red LED, universal face, 2 x 1.5W LED                      |
| PCH-G-SA   | Ni-Cd battery, green LED, universal face, 2 x 1.5W LED                    |
| PCH-R-SA-RC  | Ni-Cd battery, red LED, universal face, 2 x 1.5W LED, 3W remote capable   |
| PCH-G-SA-RC  | Ni-Cd battery, green LED, universal face, 2 x 1.5W LED, 3W remote capable |
| Options  | Description   |
| PK12-W   | 12" white pendant kit (contact factory for custom lengths)                |
| PK12-B   | 12" black pendant kit (contact factory for custom lengths)                |
| PK12-BA  | 12" brushed aluminum pendant kit (contact factory for custom lengths)     |
| B  | Black housing   |
| AT   | Autotest  |
| Compatible with PACO (PR) and PEH-T20 (PS) remotes |   |



## PACO REMOTES

Indoor Damp Wet TITLE 20 UL LISTED

| Model   | Description  |
|---------|--|
| PR-1    | Single head remote, 1 x 1.5W LED                         |
| PR-2    | Double head remote, 2 x 1.5W LED                         |
| PR-WP-1 | Outdoor LED single head remote, 12 LEDS, 3.0V, 1W        |
| PR-WP-2 | Outdoor LED double head remote, 12 LEDS (EACH), 3.0V, 1W |
| Options | Description  |
| B       | Black housing (minimum order quantity required)          |



## PEH-T20 REMOTES

Indoor Damp Wet TITLE 20 UL LISTED

| Model   | Description                                     |
|---------|---|
| PS-1    | Single head remote, 1 x 1.7W LED                |
| PPS-2   | Double head remote, 2 x 1.7W LED                |
| Options | Description                                     |
| B       | Black housing (minimum order quantity required) |



## NOVA UAC-P 800W

Indoor BAA C US

freight policy does not apply to NOVA inverters.

| Model                     | Description  |
|---------------------------|--|
| NV-UAC-P-800W-120/120V-90 | 120V input, 120VAC output, pure sine wave, 90 minute runtime |
| NV-UAC-P-800W-277/277V-90 | 277V input, 277VAC output, pure sine wave, 90 minute runtime |



## NOVA UAC-P 800W

| Options | Description  |
|---------|--|
| AT      | Autotest   |
| TD      | Time delay (preset at 10 minutes)  |
| TLP     | Twist lock plug  |
| LC      | Line cord  |
| FAI     | Fire alarm interface (specify type: open dry contact, closed dry contact or 6-24VDC) |
| CC      | Custom color   |



## NOVA UAC-P 1500-2000W

Indoor



freight policy does not apply to NOVA inverters.

| Model                      | Description  |
|----------------------------|--|
| NV-UAC-P-1500W-120/120V-90 | 120V input, 120VAC output, pure sine wave, 90 minute runtime |
| NV-UAC-P-1500W-277/277V-90 | 277V input, 277VAC output, pure sine wave, 90 minute runtime |
| NV-UAC-P-2000W-120/120V-90 | 120V input, 120VAC output, pure sine wave, 90 minute runtime |

| Options | Description  |
|---------|--|
| AT      | Autotest   |
| CC      | Custom color   |
| CT      | Cabtire  |
| FAI     | Fire alarm interface (specify type: open dry contact, closed dry contact or 6-24VDC) |
| LC      | Line cord/plug   |
| OB2     | 2 output breakers  |
| OB3     | 3 output breakers  |
| OB4     | 4 output breakers  |
| TB      | 2 additional terminal blocks   |
| TD      | Time delay (preset at 10 minutes)  |
| WS      | Wall switch  |



## VESTA MINI

Indoor 

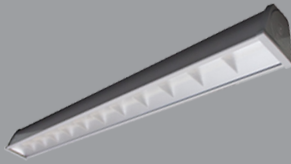
| Model                  | Description  |
|------------------------|--|
| VST-55W-125VA-UNV-24V  | 55W, 125VA, LED, incandescent, fluorescent and induction loads, Ni-Cd battery  |
| VST-110W-125VA-UNV-24V | 110W, 125VA, LED, incandescent, fluorescent and induction loads                |
| VST-110W-250VA-UNV-48V | 110W, 250VA, LED, incandescent, fluorescent and induction loads, Ni-Cd battery |
| VST-220W-250VA-UNV-48V | 220W, 250VA, LED, incandescent, fluorescent and induction loads                |
| Options                | Description  |
| RK                     | Recess mount housing   |
| TB                     | Plenum rated ceiling t-bar mount housing                                       |
| CC                     | Custom color   |
| AT                     | Autotest   |
| AO                     | Adjustable output  |
| 4C                     | 4 output circuit switching   |



## VESTA MICRO

Indoor 

| Model                  | Description  |
|------------------------|--|
| VST-M-20W-12V-120/277V | 20W, 12V, LED, fluorescent and incandescent loads, Ni-Cd battery |
| VST-M-32W-12V-120/277V | 32W, 12V, LED, incandescent and fluorescent loads                |
| VST-M-35W-12V-120/277V | 35W, 12V, LED, fluorescent and incandescent loads, Ni-Cd battery |
| VST-M-55W-12V-120/277V | 55W, 12V LED, fluorescent or incandescent loads                  |
| Options                | Description  |
| RK                     | Recess mount housing   |
| TB                     | Plenum rated ceiling t-bar mount housing                         |
| CC                     | Custom color   |
| AT                     | Autotest   |
| AO                     | Adjustable output  |



# ACCIAIO<sup>®</sup> ECO LED

LED Wet NEMA 4X IP66 IK09

TITLE 20 TITLE 24



LOGICA

**Model**

**Description**

**AC only operation (Low output) (3543 - 3765 lm)**

|                                 |   |
|---------------------------------|---|
| BX910LED-4HT-LO-WT30-120-277V   | 4ft, AC only, 30W, 3000K, gray housing  |
| BX910LED-4HT-LO-WT35-120-277V   | 4ft, AC only, 30W, 3500K, gray housing  |
| BX910LED-4HT-LO-WT40-120-277V   | 4ft, AC only, 30W, 4000K, gray housing  |
| BX910LED-4HT-LO-WT50-120-277V   | 4ft, AC only, 30W, 5000K, gray housing  |
| BX910LED-4HT-LO-WT30-120-277V-W | 4ft, AC only, 30W, 3000K, white housing |
| BX910LED-4HT-LO-WT35-120-277V-W | 4ft, AC only, 30W, 3500K, white housing |
| BX910LED-4HT-LO-WT40-120-277V-W | 4ft, AC only, 30W, 4000K, white housing |
| BX910LED-4HT-LO-WT50-120-277V-W | 4ft, AC only, 30W, 5000K, white housing |

**AC only operation (High output) (5180 - 5502 lm)**

|                                 |   |
|---------------------------------|---|
| BX910LED-4HT-HO-WT30-120-277V   | 4ft, AC only, 50W, 3000K, gray housing  |
| BX910LED-4HT-HO-WT35-120-277V   | 4ft, AC only, 50W, 3500K, gray housing  |
| BX910LED-4HT-HO-WT40-120-277V   | 4ft, AC only, 50W, 4000K, gray housing  |
| BX910LED-4HT-HO-WT50-120-277V   | 4ft, AC only, 50W, 5000K, gray housing  |
| BX910LED-4HT-HO-WT30-120-277V-W | 4ft, AC only, 50W, 3000K, white housing |
| BX910LED-4HT-HO-WT35-120-277V-W | 4ft, AC only, 50W, 3500K, white housing |
| BX910LED-4HT-HO-WT40-120-277V-W | 4ft, AC only, 50W, 4000K, white housing |
| BX910LED-4HT-HO-WT50-120-277V-W | 4ft, AC only, 50W, 5000K, white housing |

**AC & EM operation (Low output) (3543 - 3765 lm) (EM pack: 1217 lm)**

|                                 |   |
|---------------------------------|---|
| BX910LED-4SA-LO-WT30-120-277V   | 4ft, AC & EM, 30W, 3000K, gray housing  |
| BX910LED-4SA-LO-WT35-120-277V   | 4ft, AC & EM, 30W, 3500K, gray housing  |
| BX910LED-4SA-LO-WT40-120-277V   | 4ft, AC & EM, 30W, 4000K, gray housing  |
| BX910LED-4SA-LO-WT50-120-277V   | 4ft, AC & EM, 30W, 5000K, gray housing  |
| BX910LED-4SA-LO-WT30-120-277V-W | 4ft, AC & EM, 30W, 3000K, white housing |
| BX910LED-4SA-LO-WT35-120-277V-W | 4ft, AC & EM, 30W, 3500K, white housing |
| BX910LED-4SA-LO-WT40-120-277V-W | 4ft, AC & EM, 30W, 4000K, white housing |
| BX910LED-4SA-LO-WT50-120-277V-W | 4ft, AC & EM, 30W, 5000K, white housing |

## ACCIAIO<sup>®</sup> ECO LED

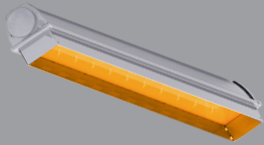
| Model  | Description                             |
|--|---|
| <b>AC &amp; EM operation (High output) (5180 - 5502 lm) (EM pack: 1217 lm)</b> |   |
| BX910LED-4SA-HO-WT30-120-277V  | 4ft, AC & EM, 50W, 3000K, gray housing  |
| BX910LED-4SA-HO-WT35-120-277V  | 4ft, AC & EM, 50W, 3500K, gray housing  |
| BX910LED-4SA-HO-WT40-120-277V  | 4ft, AC & EM, 50W, 4000K, gray housing  |
| BX910LED-4SA-HO-WT50-120-277V  | 4ft, AC & EM, 50W, 5000K, gray housing  |
| BX910LED-4SA-HO-WT30-120-277V-W  | 4ft, AC & EM, 50W, 3000K, white housing |
| BX910LED-4SA-HO-WT35-120-277V-W  | 4ft, AC & EM, 50W, 3500K, white housing |
| BX910LED-4SA-HO-WT40-120-277V-W  | 4ft, AC & EM, 50W, 4000K, white housing |
| BX910LED-4SA-HO-WT50-120-277V-W  | 4ft, AC & EM, 50W, 5000K, white housing |

| Mounting Options | Description  |
|------------------|--|
| AC50             | 50" adjustable aviation cable  |
| AC72             | 72" adjustable aviation cable  |
| AC100            | 100" adjustable aviation cable   |
| AC150            | 150" adjustable aviation cable   |
| AC250            | 250" adjustable aviation cable   |
| CH48             | 48" chain hang kit   |
| CH custom        | Custom length chain hang kit   |
| PK12             | 12" pendant kit  |
| PK24             | 24" pendant kit  |
| PK48             | 48" pendant kit  |
| PM               | Pivot mount bracket gray or white finish (specify color) Adjustable 15°, 30° and 45° |
| SP               | Surge protection (10KA)  |
| FP               | Inline fuse protection (3A)  |
| W                | White housing  |

| LOGICA (Lighting Controls) | Description  |
|----------------------------|--|
| LOG-RLY                    | Lighting control module relay                                  |
| LOG-ESRP                   | Single rocker pad (switch)                                     |
| LOG-ML2                    | Wireless, self powered, passive infrared motion and lux sensor |

## ACCIAIO® ECO LED

|             |  |
|-------------|--|
| LOG-10V12L  | wireless node  |
| LOG-HBKO10V | node & sensor  |
| NODL        | LOGICA In fixture 0-10v lighting control node solution           |
| EOSL        | LOGICA External occupancy sensor 0-10v lighting control solution |



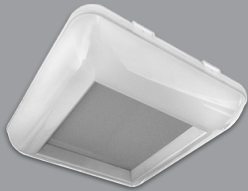
## ACCIAIO® ECO AMBER LED

LED Wet NEMA 4X IP66 IK09 TITLE 20 TITLE 24      LOGICA

| Model                         | Description  |
|-------------------------------|--|
| BX910LED-4HT-LO-WT30-120-277V | 4ft, AC only, amber LED, fully shielded  |
| BX910LED-4HT-LO-WT35-120-277V | 4ft, AC & EM, amber LED, fully shielded  |
| Mounting Options              | Description  |
| AC50                          | 50" adjustable aviation cable  |
| AC72                          | 72" adjustable aviation cable  |
| AC100                         | 100" adjustable aviation cable   |
| AC150                         | 150" adjustable aviation cable   |
| AC250                         | 250" adjustable aviation cable   |
| AC custom                     | Custom length aviation cable   |
| CH12                          | 12" chain hang kit   |
| CH24                          | 24" chain hang kit   |
| CH36                          | 36" chain hang kit   |
| CH48                          | 48" chain hang kit   |
| CH custom                     | Custom length chain hang kit   |
| PK12                          | 12" pendant kit  |
| PK24                          | 24" pendant kit  |
| PK48                          | 48" pendant kit  |
| PM                            | Pivot mount bracket gray or white finish (specify color) Adjustable 15°, 30° and 45° |

## ACCIAIO<sup>®</sup>ECO AMBER LED

|                                   |  |                 |
|-----------------------------------|--|-----------------|
| SP                                | Surge protection (10KA)  | \$9.00          |
| FP                                | Inline fuse protection (3A)                                      | \$3.50          |
| CCS                               | Custom color shield (exterior only)                              | contact factory |
| W                                 | White housing  | contact factory |
| NS                                | No shield  | contact factory |
| <b>LOGICA</b> (Lighting Controls) | <b>Description</b>   | <b>Adder</b>    |
| LOG-RLY                           | Lighting control module relay                                    | \$88.00         |
| LOG-ESRP                          | Wireless, self powered, passive infrared motion and lux sensor   | \$66.00         |
| LOG-ML2                           | Wireless node  | \$104.50        |
| LOG-10V12L                        | wireless node  | \$49.50         |
| LOG-HBKO10V                       | Node & sensor  | \$71.50         |
| NODL                              | LOGICA In fixture 0-10v lighting control node solution           | contact factory |
| EOSL                              | LOGICA External occupancy sensor 0-10v lighting control solution | contact factory |



## LEDLUMINA BS400

LED Wet IP66 IK09 TITLE 20 TITLE 24    LOGICA

| Model   | Description         |
|---|---------------------|
| <b>AC only operation (Low output) (3571 - 3779 lm)</b>    |                     |
| BS400LED-HT-LO-WT30-120-277V                              | AC only, 30W, 3000K |
| BS400LED-HT-LO-WT40-120-277V                              | AC only, 30W, 4000K |
| BS400LED-HT-LO-WT50-120-277V                              | AC only, 30W, 5000K |
| <b>AC only operation (Medium output) (5358 - 5671 lm)</b> |                     |
| BS400LED-HT-MO-WT30-120-277V                              | AC only, 45W, 3000K |
| BS400LED-HT-MO-WT40-120-277V                              | AC only, 45W, 4000K |
| BS400LED-HT-MO-WT50-120-277V                              | AC only, 45W, 5000K |
| <b>AC only operation (High output) (6880 - 7282 lm)</b>   |                     |
| BS400LED-HT-HO-WT30-120-277V                              | AC only, 60W, 3000K |
| BS400LED-HT-HO-WT40-120-277V                              | AC only, 60W, 4000K |
| BS400LED-HT-HO-WT50-120-277V                              | AC only, 60W, 5000K |

## LEDLUMINA BS400

| Model   | Description  |
|---|--|
| <b>AC &amp; EM only operation (Low output) (5975 - 7539 lm) (EM pack: 1251 lm)</b>    |  |
| BS400LED-SA-LO-WT30-120-277V  | AC & EM, 30W, 3000K  |
| BS400LED-SA-LO-WT40-120-277V  | AC & EM, 30W, 4000K  |
| BS400LED-SA-LO-WT50-120-277V  | AC & EM, 30W, 5000K  |
| <b>AC &amp; EM only operation (Medium output) (5358 - 5671 lm) (EM pack: 1251 lm)</b> |  |
| BS400LED-SA-MO-WT30-120-277V  | AC & EM, 45W, 3000K  |
| BS400LED-SA-MO-WT40-120-277V  | AC & EM, 45W, 4000K  |
| BS400LED-SA-MO-WT50-120-277V  | AC & EM, 45W, 5000K  |
| Options   | Description  |
| EM-RMT  | Remote mount emergency backup w/ 90 min runtime (HT only - All models) |
| EM-CT   | Integrated cold temperature emergency pack (HT only - LO & MO models)  |
| FP  | Inline fuse protection (3A)  |
| SP  | Surge protection (10KA)  |
| 347V / 480V   | 347V / 480V input  |
| Mounting Options  | Description  |
| AC50  | 50" adjustable aviation cable  |
| AC72  | 72" adjustable aviation cable  |
| AC100   | 100" adjustable aviation cable   |
| AC150   | 150" adjustable aviation cable   |
| AC250   | 250" adjustable aviation cable   |
| AC custom   | Custom length aviation cable   |
| CH12  | 12" chain hang kit   |
| CH 24   | 24" chain hang kit   |
| CH 36   | 36" chain hang kit   |
| CH 48   | 48" chain hang kit   |
| CH custom   | Custom length chain hang kit   |
| PK12  | 12" pendant kit  |
| PK24  | 24" pendant kit  |
| PK48  | 48" pendant kit  |

## LEDLUMINA BS400

| Mounting Options           | Description  |
|----------------------------|--|
| PK custom                  | Custom pendant kit   |
| SVLPK12                    | 12" swivel pendant kit   |
| SVLPK24                    | 24" swivel pendant kit   |
| SVLPK48                    | 48" swivel penant kit  |
| SVLPK custom               | Custom swivel pendant kit  |
| TM8                        | 8" height trunnion mount   |
| TM                         | Custom length trunnion mount                                     |
| LOGICA (Lighting Controls) | Description  |
| LOG-RLY                    | Lighting control module relay                                    |
| LOG-ESRP                   | Single rocker pad (switch)                                       |
| LOG-ML2                    | Wireless, self powered, passive infrared motion and lux sensor   |
| LOG-DR10V12                | Wireless node  |
| LOG-HBKO10V                | Node & sensor  |
| NODL                       | LOGICA In fixture 0-10v lighting control node solution           |
| IOSL                       | LOGICA Internal occupancy sensor 0-10v lighting control solution |





# PLANEX<sup>®</sup> ECO

LED Indoor Damp IP44 TITLE 24 DLC Type IC cUL<sup>®</sup> LISTED

| Model                       | Description   |
|-----------------------------|---|
| <b>1x4 (4941 - 5097 lm)</b> |   |
| PLX-E-14-WT35-120-277V      | AC Only, 40W, 3500K, 0-10V dimming, grid mount                    |
| PLX-E-14-WT40-120-277V      | AC Only, 40W, 4000K, 0-10V dimming, grid mount                    |
| PLX-E-14-WT50-120-277V      | AC Only, 40W, 5000K, 0-10V dimming, grid mount                    |
| <b>2x2 (4810 - 5029 lm)</b> |   |
| PLX-E-2-WT35-120-277V       | AC Only, 40W, 3500K, 0-10V dimming, grid mount                    |
| PLX-E-2-WT40-120-277V       | AC Only, 40W, 4000K, 0-10V dimming, grid mount                    |
| PLX-E-2-WT50-120-277V       | AC Only, 40W, 5000K, 0-10V dimming, grid mount                    |
| <b>2x4 (6004 - 6280 lm)</b> |   |
| PLX-E-4-WT35-120-277V       | AC Only, 50W, 3500K, 0-10V dimming, grid mount                    |
| PLX-E-4-WT40-120-277V       | AC Only, 50W, 4000K, 0-10V dimming, grid mount                    |
| PLX-E-4-WT50-120-277V       | AC Only, 50W, 5000K, 0-10V dimming, grid mount                    |
| Mounting Options            | Description   |
| EM                          | Emergency back-up (field installation emergency driver)           |
| SPS50                       | Safety cable kit  |
| PLX14-SM                    | 1x4 surface mount kit   |
| PLX2-SM                     | 2x2 surface mount kit   |
| PLX4-SM                     | 2x4 surface mount kit   |
| PLX14-RM                    | 1x4 recessed mount kit  |
| PLX2-RM                     | 2x2 recessed mount kit  |
| PLX4-RM                     | 2x4 recessed mount kit  |
| PLX14-AC50                  | 1x4 AC cable kit for suspension mount. Includes surface mount kit |
| PLX2-AC50                   | 2x2 AC cable kit for suspension mount. Includes surface mount kit |
| PLX4-AC50                   | AC cable kit for suspension mount. Includes surface mount kit     |



# LUCE SOLARE BLS SERIES

WET IP65  

| Model   | Description                              |
|---------|--|
| BLS-2A  | Max 1,500 lm @ 100% output, 6500K, 18W   |
| BLS-4A  | Max 3,000 lm @ 100% output, 6500K, 30.6W |
| BLS-6A  | Max 4,500 lm @ 100% output, 6500K, 48.2W |
| BLS-8A  | Max 6,000 lm @ 100% output, 6500K, 72W   |
| BLS-10A | Max 8,000 lm @ 100% output, 6500K, 72W   |

## Replacement Parts

### PCB Control Board

|        |                                   |
|--------|-----------------------------------|
| PCB2A  | Printed Control Board for BLS-2A  |
| PCB4A  | Printed Control Board for BLS-4A  |
| PCB6A  | Printed Control Board for BLS-6A  |
| PCB8A  | Printed Control Board for BLS-8A  |
| PCB10A | Printed Control Board for BLS-10A |

### Single LED Panel

|       |  |
|-------|--|
| LP2A  | Single LED panel for BLS-2A (2 per unit needed)  |
| LP4A  | Single LED panel for BLS-4A (4 per unit needed)  |
| LP6A  | Single LED panel for BLS-6A (2 per unit needed)  |
| LP8A  | Single LED panel for BLS-8A (4 per unit needed)  |
| LP10A | Single LED panel for BLS-10A (4 per unit needed) |

### Battery Pack

|       |                          |
|-------|--------------------------|
| BP2A  | Battery pack for BLS-2A  |
| BP4A  | Battery pack for BLS-4A  |
| BP6A  | Battery pack for BLS-6A  |
| BP8A  | Battery pack for BLS-8A  |
| BP10A | Battery pack for BLS-10A |

**LUCE SOLARE** BLS SERIES

| <b>Solar Panel</b> | <b>Description</b>      |
|--------------------|-------------------------|
| SP2A               | Solar Panel for BLS-2A  |
| SP4A               | Solar Panel for BLS-4A  |
| SP6A               | Solar Panel for BLS-6A  |
| SP8A               | Solar Panel for BLS-8A  |
| SP10A              | Solar Panel for BLS-10A |

**Publication date: June 07 2019**

**Beghelli**

**HOT  
SHEET**

**2019**