

REPORT NUMBER: ITL68900

PAGE: 1 OF 5

ISSUE DATE: 06/22/11

PREPARED FOR: BEGHELLI

CATALOG NUMBER: BRZ

LUMINAIRE: ONE 12.625" X 8.375" MOLDED WHITE PLASTIC SINGLE FACE EXIT SIGN WITH BOTTOM EMERGENCY LIGHT COMPARTMENT. THE EMERGENCY LIGHT COMPARTMENT CONSISTS OF: PIVOTING OPTICAL ASSEMBLY WITH MOLDED PLASTIC SPECULAR REFLECTOR AND ONE CIRCUIT BOARD WITH 36 LEDS. CLEAR LINEAR PRISMATIC PLASTIC DROP LENS, LENS PRISMS IN WITH BOTTOM PRISMS PERPENDICULAR TO THE 0-DEGREE PLANE AND SIDE PRISMS VERTICAL. PIVOTING LIGHT ASSEMBLY AIMED STRAIGHT DOWN FOR THIS TEST. ONLY THE EMERGENCY LIGHT COMPARTMENT WAS ILLUMINATED FOR THIS TEST.

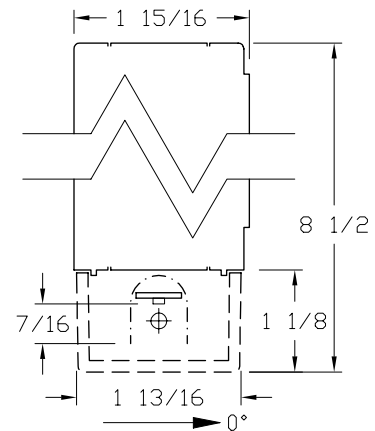
LAMPS: THIRTY-SIX WHITE LIGHT EMITTING DIODES (LEDS), VERTICAL BASE-UP POSITION.

TOTAL INPUT WATTS = 2.22 AT 9.6 VOLTS DC
NOTE: DATA SHOWN IS ABSOLUTE FOR THE SAMPLE PROVIDED AT CLIENT REQUESTED INPUT.

VOLTAGE (9.6VDC) TO THE LED ASSEMBLY.

TEST PROCEDURE: IESNA LM-79-08

TEST DISTANCE = 25.25 FEET



CANDELA DISTRIBUTION

	0.0	22.5	45.0	67.5	90.0	FLUX
0	97.4	97.4	97.4	97.4	97.4	
5	85.3	86.2	87.5	88.2	98.7	8.5
15	61.3	63.7	76.0	85.5	93.6	20.9
25	20.1	22.7	39.4	69.4	79.8	21.8
35	17.5	17.0	16.1	59.9	66.0	21.1
45	22.7	16.7	13.1	35.9	42.2	19.4
55	28.5	24.4	10.6	21.7	24.0	18.4
65	18.8	18.6	11.2	11.6	8.2	13.8
75	10.1	9.8	8.4	6.0	2.8	8.2
85	3.7	3.4	3.0	1.6	0.4	3.0
90	2.8	2.5	1.6	0.6	0.0	
95	3.8	3.6	2.2	0.9	0.0	2.3
105	5.8	4.7	4.4	1.6	0.0	3.7
115	7.8	6.4	5.3	2.8	0.0	4.8
125	9.7	8.9	5.6	2.4	0.0	4.9
135	3.5	4.0	2.8	1.0	0.0	2.1
145	1.7	1.6	1.1	0.4	0.0	0.7
155	1.3	1.1	0.7	0.2	0.0	0.3
165	0.6	0.6	0.3	0.0	0.0	0.1
175	0.0	0.0	0.0	0.0	0.0	0.0
180	0.0	0.0	0.0	0.0	0.0	0.0

ZONAL LUMEN SUMMARY

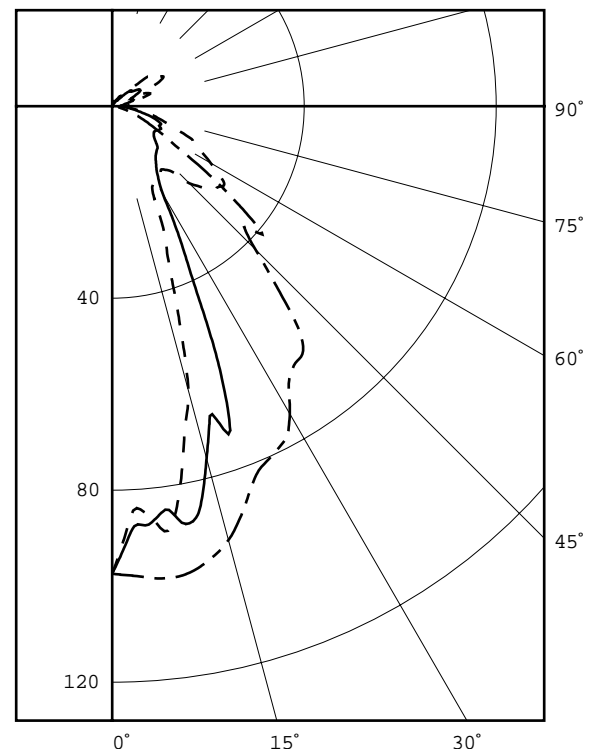
ZONE	LUMENS	%FIXT
0- 30	51.2	33.3
0- 40	72.3	46.9
0- 60	110.1	71.5
0- 90	135.1	87.7
90-120	10.8	7.0
90-130	15.7	10.2
90-150	18.5	12.0
90-180	18.9	12.3
0-180	154.0	100.0

EFFICACY = 69.4 Lm/W

CIE TYPE - SEMI-DIRECT

PLANE : 0-DEG 90-DEG

SPACING CRITERIA : 0.58 1.14



LEGEND:

0-deg: - - - - -
45-deg: _____
90-deg:

Checked M.KLOPF.....

Approved R.BEATTIE.....

Lighting Engineer