



LIGHTING SCIENCES CANADA LTD.

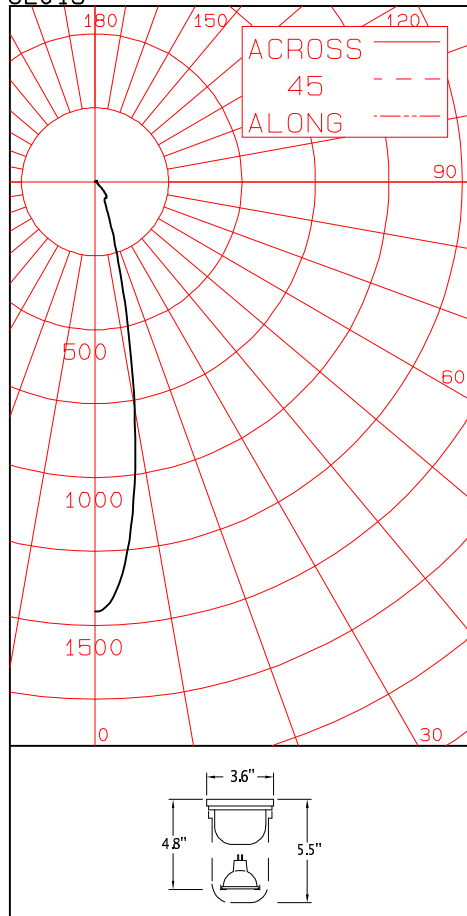
160 Frobisher Drive, Unit 5, Waterloo, Ontario, Canada N2V 2B1
Tel: (519) 746-3140 Fax: (519) 746-3156 lsc@lightingsciences.ca

CERTIFIED TEST REPORT NO. LSC E015
COMPUTED BY LSC PROGRAM **TEST-LITE**

BEGHELLI FORTEZZA EMERGENCY LIGHT CAT. NO. FTZ EMERGENCY LIGHT
WITH CLEAR LENS
ONE 12V 35W MR16 INCANDESCENT LAMP. LUMEN OUTPUT = 375 LMS.

CANDLEPOWER SUMMARY

CE015



ANGLE	MEAN CP	LMS.	ANGLE	MEAN CP	LMS.
0	1454		90	5	
5	1258	104	95	5	5
10	774		100	5	
15	354	103	105	5	6
20	163		110	6	
25	86	43	115	6	6
30	66		120	6	
35	67	41	125	6	5
40	57		130	4	
45	36	28	135	2	2
50	17		140	2	
55	11	10	145	1	1
60	9		150	1	
65	8	8	155	1	0
70	7		160	0	
75	7	7	165	0	0
80	6		170	0	
85	5	6	175	0	0
90	5		180	0	

ZONAL LUMENS AND PERCENTAGES

ZONE	LUMENS	% LAMP	% LUMINAIRE
0-30	250	66.76	66.76
0-40	290	77.58	77.58
0-60	328	87.78	87.78
0-90	349	93.25	93.25
40-90	58	15.66	15.66
60-90	20	5.46	5.46
90-180	25	6.75	6.75
0-180	375	100.00	100.00

** EFFICACY = 11.2 LMS/WATT **

LUMINANCE SUMMARY-CD. / SQ. M.

S/MH = .4
SC = .4

ANGLE	MEAN CD/SQ M
45	44433
55	16563
65	15844
75	22554
85	53846

CERTIFIED BY:

Charles Lison

DATE:
SEP 21, 2009

PREPARED FOR:

BEGHELLI CANADA INC.
MARKHAM, ONTARIO

TESTED ACCORDING TO IES PROCEDURES. TEST DISTANCE EXCEEDS FIVE
TIMES THE GREATEST LUMINOUS OPENING OF LUMINAIRE.

LIGHTING SCIENCES CANADA LTD.
160 FROBISHER DRIVE, UNIT 5
WATERLOO, ONTARIO

CERTIFIED TEST REPORT NO. LSC E015
COMPUTED BY LSC PROGRAM **TEST-LITE**

BEGHELLI FORTEZZA EMERGENCY LIGHT CAT. NO. FTZ EMERGENCY LIGHT
WITH CLEAR LENS
ONE 12V 35W MR16 INCANDESCENT LAMP. LUMEN OUTPUT = 375 LMS.

CANDLEPOWER DATA

ANGLE	CANDLEPOWER	LUMENS
0	1454	
5	1258	104
10	774	
15	354	103
20	163	
25	86	43
30	66	
35	67	41
40	57	
45	36	28
50	17	
55	11	10
60	9	
65	8	8
70	7	
75	7	7
80	6	
85	5	6
90	5	
95	5	5
100	5	
105	5	6
110	6	
115	6	6
120	6	
125	6	5
130	4	
135	2	2
140	2	
145	1	1
150	1	
155	1	0
160	0	
165	0	0
170	0	
175	0	0
180	0	

LIGHTING SCIENCES CANADA LTD.
160 FROBISHER DRIVE, UNIT 5
WATERLOO, ONTARIO

CERTIFIED TEST REPORT NO. LSC E015
COMPUTED BY LSC PROGRAM **TEST-LITE**

BEGHELLI FORTEZZA EMERGENCY LIGHT CAT. NO. FTZ EMERGENCY LIGHT
WITH CLEAR LENS
ONE 12V 35W MR16 INCANDESCENT LAMP. LUMEN OUTPUT = 375 LMS.

AVERAGE LUMINANCE DATA

ANGLE	LUMINANCE	
0	1274914	(372102)
30	66819	(19502)
40	65270	(19050)
45	44433	(12968)
50	23149	(6756)
55	16563	(4834)
60	15735	(4592)
65	15844	(4624)
70	18836	(5497)
75	22554	(6582)
80	27907	(8145)
85	53846	(15716)

DETERMINED IN ACCORDANCE WITH CURRENT IES PUBLISHED PROCEDURES

LIGHTING SCIENCES CANADA LTD.
 160 FROBISHER DRIVE, UNIT 5
 WATERLOO, ONTARIO

CERTIFIED TEST REPORT NO. LSC E015
 COMPUTED BY LSC PROGRAM **TEST-LITE**

BEGHELLI FORTEZZA EMERGENCY LIGHT CAT. NO. FTZ EMERGENCY LIGHT
 WITH CLEAR LENS
 ONE 12V 35W MR16 INCANDESCENT LAMP. LUMEN OUTPUT = 375 LMS.

COEFFICIENTS OF UTILIZATION

ZONAL CAVITY METHOD

EFFECTIVE FLOOR CAVITY REFLECTANCE = .20

CC WALL	80				70				50				30				10				0
	70	50	30	10	70	50	30	10	50	30	10	50	30	10	50	30	10	50	30	10	0
RCR																					
0	1.17	1.17	1.17	1.17	1.14	1.14	1.14	1.14	1.07	1.07	1.07	1.01	1.01	1.01	.96	.96	.96	.96	.96	.96	.93
1	1.12	1.09	1.06	1.04	1.09	1.06	1.04	1.02	1.01	.99	.98	.96	.95	.93	.92	.90	.90	.92	.90	.90	.87
2	1.07	1.02	.98	.95	1.04	1.00	.96	.93	.95	.93	.90	.92	.90	.88	.88	.86	.85	.88	.86	.85	.83
3	1.02	.96	.92	.88	1.00	.94	.91	.87	.91	.88	.85	.88	.85	.83	.85	.83	.81	.85	.83	.81	.79
4	.98	.92	.87	.83	.96	.90	.86	.82	.87	.83	.81	.84	.81	.79	.82	.79	.77	.82	.79	.77	.76
5	.95	.87	.82	.78	.92	.86	.81	.78	.83	.79	.76	.81	.78	.75	.79	.76	.74	.79	.76	.74	.72
6	.91	.84	.78	.75	.89	.82	.78	.74	.80	.76	.73	.78	.75	.72	.77	.73	.71	.77	.73	.71	.70
7	.88	.80	.75	.71	.86	.79	.74	.71	.77	.73	.70	.75	.72	.69	.74	.71	.68	.74	.71	.68	.67
8	.85	.77	.72	.68	.83	.75	.71	.68	.74	.70	.67	.73	.69	.66	.71	.68	.66	.71	.68	.66	.64
9	.82	.74	.69	.65	.80	.73	.68	.65	.72	.67	.64	.70	.67	.64	.69	.66	.63	.69	.66	.63	.62
10	.79	.71	.66	.63	.78	.70	.66	.63	.69	.65	.62	.68	.64	.62	.67	.63	.61	.67	.63	.61	.60

DETERMINED IN ACCORDANCE WITH CURRENT IES PUBLISHED PROCEDURES
 LUMINAIRE INPUT WATTS = 33.6
 LABORATORY RESULT MAY NOT BE REPRESENTATIVE OF FIELD PERFORMANCE.
 ABSOLUTE PHOTOMETRY TAKEN.