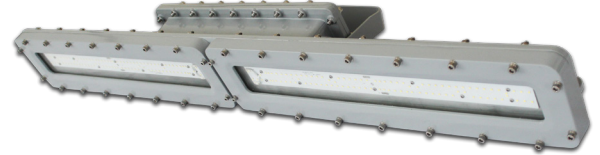




CASTEX 600



... features + benefits

HAZARDOUS CLASSIFICATIONS	<ul style="list-style-type: none">• Class I, Division 1, Groups C, D• Class I, Division 2, Groups A, B, C, D• Class II, Division 1, Groups E, F, G• Class II, Division 2, Groups F, G• Class III
PERFORMANCE RANGE	<ul style="list-style-type: none">• VLO: 40W @ 5600 lm• LO: 50W @ 7000 lm• MO: 60W @ 8400 lm• HO: 80W @ 12000 lm• VHO: 100W @ 14000 lm
OPERATING TEMPERATURE	<ul style="list-style-type: none">• -40°F to 140°F (-40°C to 60°C)• Allows for installation in harsh environments.
DURABLE CONSTRUCTION	<ul style="list-style-type: none">• Die-cast copper free aluminum• Provides added durability for installations in corrosive environments.
IMPACT RESISTANT DESIGN	<ul style="list-style-type: none">• Impact resistant design protects the product from high-impact forces cause by natural or human occurrences.
SERIOUS PROTECTION	<ul style="list-style-type: none">• Rated IP66 making it suitable for installations in wet and dust filled locations.
MULTIPLE MOUNTING OPTIONS	<ul style="list-style-type: none">• Chain Mount• Pendant Kit• Wall / Surface
WARRANTY	<ul style="list-style-type: none">• 5 Years