

LUCE SOLARE

solar integrated systems

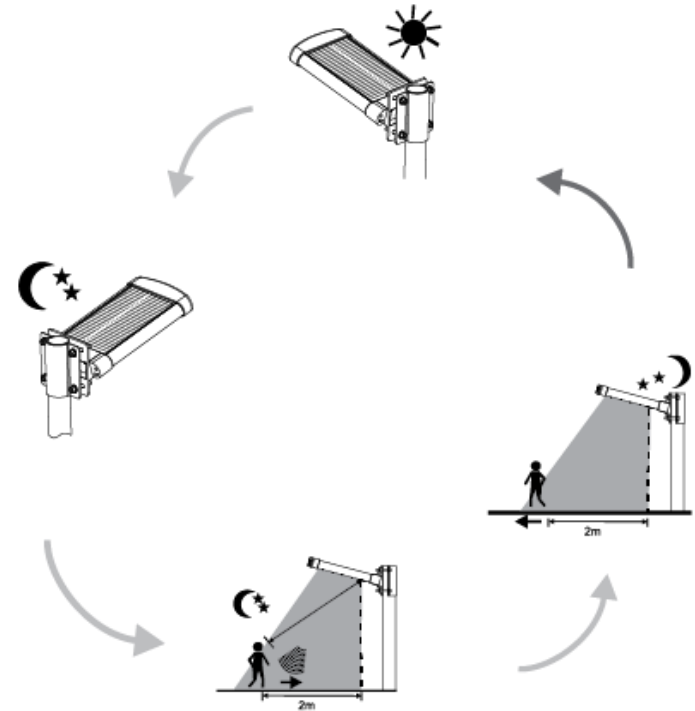
Topics of Discussion

- ✓ The Basics of Solar Technology
- ✓ Intro to LUCE SOLARE BLS SERIES
- ✓ Benefits
- ✓ Specifications
- ✓ Applications
- ✓ Q&A

The Basics of Solar Technology

The Basics of Solar Technology

- Very simply, the PV Module converts photons into electricity.
- The solar panels are made up of photovoltaic (PV) cells, which convert sunlight into direct current (DC) and charge / maintain the batteries throughout the day.
- The charge controller regulates the battery charging to achieve optimal capacity in sunlight.



LUCE SOLARE BLS SERIES



- **BLS-2A** - 18W - 1500lm
- **BLS-4A** - 31W - 3000lm
- **BLS-6A** - 40W - 4500lm
- **BLS-8A** - 72W - 6000lm
- **BLS-10A** - 72W - 8000lm

Color Temperature - 6500K Standard
Distribution – Type II

BLS SERIES OPERATING MODES

Luce Solare (BLS Series) has three operating modes.

Green Light

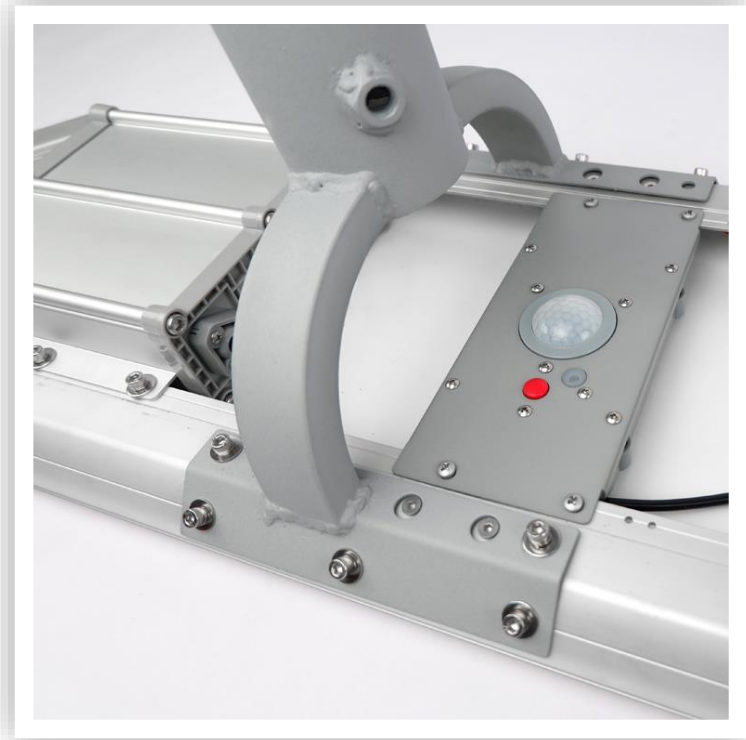
- 5 hours at 100%
- 7 hours at 30% power, when motion activated increases to full brightness.

Orange Light

- 5 hours at 70%
- 7 hours at 30% power, when motion activated increases to full brightness.

Red Light

- 12 hours at 30% power, when motion activated increases to full brightness.



Benefits

IP65 WET  RoHS COMPLIANT 

- All in one solution!
- Environmentally Friendly
- Easy to Install
- Safe
- No hassles of complex cabling
- Lower cost of installation
- \$0 energy cost
- IP65
- Type II Distribution
- Easy to spec



IP65 WET  RoHS COMPLIANT 

 PlanetSun
PHOTOVOLTAIC SYSTEM
Beghelli

Specifications

Specifications

IP65 WET  

Sun for Life

LUCE SOLARE	BLS-2A	BLS-4A	BLS-6A	BLS-8A	BLS-10A
Solar Panel	18 W	31 W	40W	72 W	72 W
Max Lumen Output	1500 lm	3000 lm	4500 lm	6500 lm	8000 lm
Color Temperature	6500K				
Discharge Time*	10 -12 hrs				
Charge Time*	9 -11 hrs				
Mounting Height	6.5 - 10 ft	10 - 15 ft	16 - 21 ft	20 - 25 ft	
Effective Projected Area (EPA)	2.3 ft ²	3.2 ft ²	4.5 ft ²	6.4 ft ²	
Weight	16.7 lbs	22 lbs	30 lbs	43 lbs	
Warranty	3 years				

* Varies based on conditions.

Upon proper installation and start-up, Beghelli does not guarantee product performance meets specified performance levels. Unknown environmental conditions effect performance. In no event shall Beghelli be liable for special, incidental or consequential damages related directly or indirectly to the lack of product functionality and / or performance.

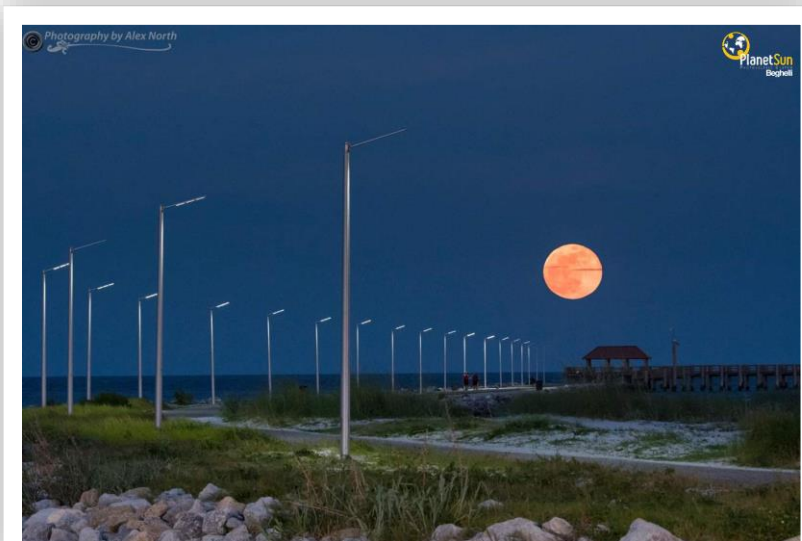
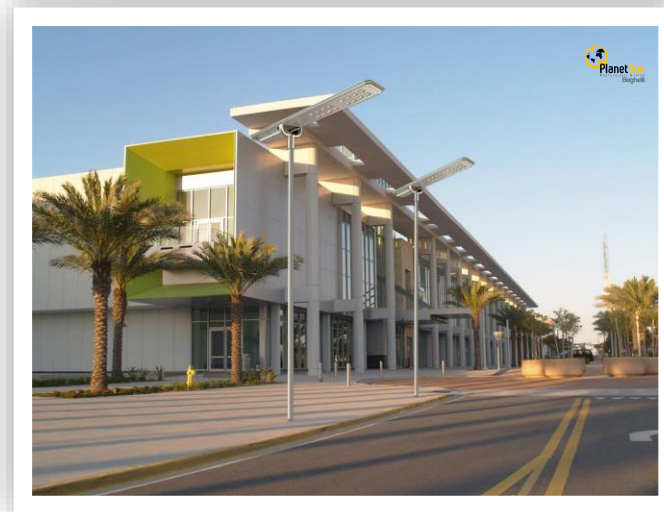


Applications

Applications

IP65 WET  RoHS COMPLIANT 

- Anywhere where electrical power is limited or non existent !
 - Country Roads
 - Farms
 - Trails
- Temporary lighting
- Pathways
- City and Community Parks
- Roads
- Public walkways
- Parking areas
- Open areas



SOLAR PANEL, BATTERY, AND LED ALL IN ONE!
BLS SERIES
1500 TO 8000 LUMENS



HIGH POWER
LEDS



PROGRAM SWITCH
&
PIR MOTION SENSOR



BATTERY



Upon proper installation and start-up, Beghelli does not guarantee product performance meets specified performance levels. Unknown environmental conditions effect performance. In no event shall Beghelli be liable for special, incidental or consequential damages related directly or indirectly to the lack of product functionality and / or performance.

LUCE SOLARE

solar integrated systems

