



B

**FIELD APPLICATION GUIDE
2019**

Beghelli



Beghelli

Beghelli specializes in commercial, industrial lighting and life safety products. Beghelli designs, develops and manufactures state of the art innovative solutions.

EMERGENCY & EXIT

Beghelli's emergency line features exit signs and emergency luminaires for indoor, wet and hazardous applications. All Beghelli's emergency products have been designed to be innovative, code compliant solutions.

Beghelli
LUCE

Beghelli's lighting line features industrial and commercial solutions that promote energy savings achieved through smart technology and design.



B

FIELD APPLICATION GUIDE

A perfect guide for your every application; combining emergency and lighting solutions.

SPECIAL FEATURE ICON GUIDE

Look for these icons as they apply to specific products.



Meets Buy America Act



Design Light Consortium Listed Product



Suitable for Hazardous locations



Title 24 listed



Sanitation Compliant



Title 20 listed



Luce products



Wildlife Lighting Certification



Emergency products



Restriction of Hazardous Substances

PRODUCT CERTIFICATIONS



Beghelli products are properly certified by CSA, UL and ETL laboratories.

RESOURCES



BAA

The Buy American Act (BAA) establishes a preference for the federal government, when purchasing supplies for use in the United States, to purchase products mined, produced, or manufactured in the United States.

www.recovery.gov/



DESIGNLIGHTS CONSORTIUM

The Florida Fish and Wildlife Conservation Commission DLC is a collaboration of utility companies and regional energy efficiency organizations committed to raising awareness of the benefits of efficient lighting in commercial buildings.

www.designlights.org/



Title 24 is intended to reduce energy use in California with the latest standards effective as of July 1, 2014. The use of advanced lighting controls to synchronize light levels with daylight, occupancy, and multi-level control demand response capability are required to be compliant. Title 24 continues to put California on the forefront of energy conservation.



Title 20 is part of the Appliance Efficiency Regulation and California of Regulations that requires manufacturer certification of “self-contained” lighting control devices in California. “Self-contained” lighting control devices are defined as discrete lighting control devices that can perform their designed function without the requirement of being connected to additional devices.



Florida Fish and Wildlife Conservation Commission

The Wildlife Lighting Certification Program is designed to educate the members of the public, the building industry, and government officials how to minimize artificial light impacts to wildlife by using proper lighting methods and identifying appropriate lighting fixtures, shields, and lamps. Appropriate wildlife lighting meets ALL THREE of the criteria below.

www.myfwc.com



Restriction of Hazardous Substances

RoHS stands for Restriction of Hazardous Substances and impacts the entire electronics industry and many electrical products as well. The original RoHS, also known as Directive 2002/95/EC, originated in the European Union in 2002 and restricts the use of six hazardous materials found in electrical and electronic products. All applicable products in the EU market since July 1, 2006 must pass RoHS compliance.

www.rohsguide.com

TABLE OF CONTENTS



INDUSTRIAL

06

- 07 FOOD PROCESSING
- 08 REFRIGERATION
- 09 PARKING DECKS
- 10 WAREHOUSE
- 11 HAZARDOUS



COMMERCIAL

12

- 13 RETAIL
- 15 HOSPITALITY
- 17 EDUCATION
- 19 OFFICES

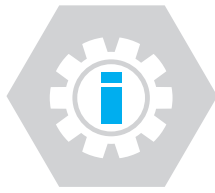


EXTERIOR

20

- 21 PATHWAY/SIGNAGE/SITE/AREA
- 22 KEY JOBS





INDUSTRIAL





LIGHTING NEEDS:

- NSF or equivalent certification is required
- Wash down environments are common
- Controls and sensors are often times used



QUESTIONS YOU SHOULD ASK:

- Does the luminaire have the required certifications for the environment?
- Will the luminaires be hosed down? If "yes" with what PSI?
- Are any controls / sensors needed in this environment?



FOOD PROCESSING

Food processing facilities have a very specific set of demands. Due to the variety of spaces, different types of lighting solutions need to be applied accordingly. Cold storage, splash zones or warehousing spaces should be fitted with a product that meets their safety, durability, and lighting needs.

These areas may consist of:

- Smoke
- Oil
- Dust
- Streaming water
- Pressured wash downs
- Cleaning or chemical solutions
- Extreme temperatures

BOXLED®



WET/NEMA 4X/IP66/VANDAL RESISTANT

- Die-cast aluminum housing
- 15,000 up to 25,300 lm / 150W up to 230W
- Choice of distribution patterns
- Multiple mounting configurations



SPYDER® MINI



WET/IP67 • (2', 4', 6')

- 3500K, 4000K & 5000K standard
- 4.8W per linear foot
- 57 lumens per watt
- Compact design



BS100LED



WET/IP66/VANDAL RESISTANT • (2', 4')

- 100% polycarbonate construction
- 3,600 up to 8,000 lm / 30W up to 70W
- L70 > 60,000 hrs
- Multiple mounting configurations



FTZ+PLUS



WET/IP66/VANDAL RESISTANT

- Heavy duty die-cast construction
- Impact resistant polycarbonate cover
- Custom wording available
- Universal mounting



ACCIAIO® ECO BX910



WET/NEMA 4X/IP66/IK09 • (4')

- Durable steel construction
- 3,500 up to 5,500 lm / 30W up to 50W
- L70 > 60,000 hrs
- 7 year warranty



BOLLA



WET/NEMA 4X/VANDAL RESISTANT

- Heavy duty die-cast construction
- Protection against moisture & corrosion
- Impact resistant polycarbonate cover
- Compact surface mount design





LIGHTING NEEDS:

- Cold temperature operation is required
- On/Off sensors often times used
- Wash down environments are common



QUESTIONS YOU SHOULD ASK:

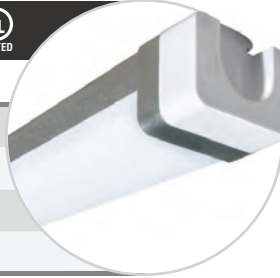
- What is the minimum operating temperature of the luminaire?
- Does the luminaire have the appropriate ratings for this environment?
- Is emergency operation needed?

SPADA®



WET/IP66/VANDAL RESISTANT • (2', 4')

- Polycarbonate & aluminum housing
- 1,700 up to 4,300 lm / 20W up to 40W
- Low profile design
- Multiple mounting configurations



TESTA



WET/NEMA 4X

- Die-cast aluminum constructions
- 1,400 or 2,500 lm
- Impact resistant acrylic lens
- Stainless steel swivel for precise aiming



BS100 LED PLUS2



WET/IP65/VANDAL RESISTANT • (2')

- 100% polycarbonate construction
- 3500K, 4000K & 5000K standard
- 5,500 up to 8,300 lm / 50W up to 70W
- Multiple mounting configurations



WLX



NI-CD • WET/NEMA/4X/IP44 • FIBERGLASS

- Internal heater option
- Polycarbonate lens and fiberglass housing
- Combo available
- Custom wording available



BS101LED



WET/IP65/VANDAL RESISTANT • (4')

- 100% polycarbonate construction
- 6,100 up to 9,100 lm / 50W up to 70W
- Economical solution
- Multiple mounting configurations



EDT



WET/NEMA 4 & 4X

- High capacity allows for remote loads
- Durable fiberglass enclosure
- Internal heater
- Top or side mounted heads



ACCIAIO® BX920LED



WET/NEMA 4X/IP66/VANDAL RESISTANT • (4')

- 24-gauge steel housing
- Quick connect installation system
- Wireless lighting control 0-10V/DALI
- Multiple mounting configurations



BRAVADO



WET/NEMA 4X/IP66/VANDAL RESISTANT

- Heavy duty die-cast construction
- Up to 70' on center spacing
- Designed for wall or ceiling installation
- -20C w/ internal heater option





LIGHTING NEEDS:

- Reducing maintenance time is important
- Proper lighting when occupied is required
- Wet location luminaires are ideal for parking decks



QUESTIONS YOU SHOULD ASK:

- Will this area require hose down cleaning?
- Should I use sensors in a parking deck?
- What mounting options do I have that can optimize performance?

BS400



WET/IP66/VANDAL RESISTANT

- Wireless lighting control 0-10/DALI
- From 3,500 up to 7,200 lm / 30W up to 60W
- L70 > 54,000 hrs
- Multiple mounting configurations

BOXLED® MIDI



WET/IP66/VANDAL RESISTANT

- Durable die-cast construction
- 3,400 up to 11,700 lm / 50W up to 90W
- In-field distribution change
- Multiple mounting configurations

BS100LED



WET/IP66/VANDAL RESISTANT • (2', 4')

- 100% polycarbonate construction
- 3,600 up to 8,800 lm / 30W up to 70W
- L70 > 60,000 hrs
- Multiple mounting configurations

FTZ COMBO



WET/IP66/VANDAL RESISTANT

- Heavy Duty die-cast construction
- Wall, ceiling or end mounting
- Impact resistant polycarbonate cover
- Enclosed & protected heads

BS100LED-PG



WET/IP66/VANDAL RESISTANT • (4')

- 100% polycarbonate
- 6,000 up to 8,000 lm / 50W up to 70W
- Integrated emergency available
- Multiple mounting configurations

PACO AQUA EXIT



INDOOR/WET/DAMP

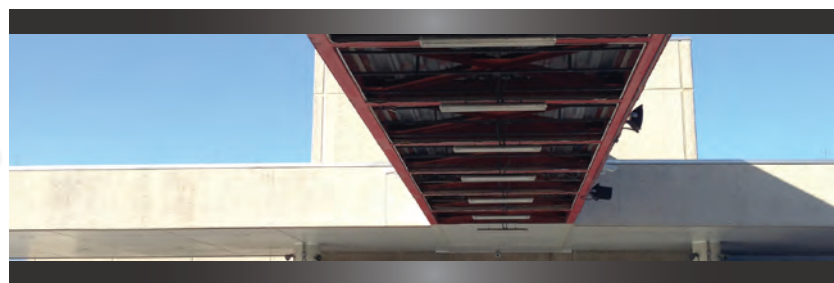
- High impact, thermoplastic housing
- Corrosion resistant
- Universal mounting
- Remote capable emergency exit

PLURALUCE® WP



WET/NEMA 4X

- 3 field selectable optics
- Durable aluminum construction
- Up to 60' on center spacing
- AC only, EM only or AC & EM





LIGHTING NEEDS:

- Occupancy sensors to lower energy costs
- Long lamp life to reduce maintenance
- Proper distribution to evenly illuminate



QUESTIONS YOU SHOULD ASK:

- What is the rated lamp life?
- Are sensors available and easily adjusted?
- Are multiple distribution patterns available?

VALORE



INDOOR/DAMP • (2', 4')

- Durable steel construction
- 15,500 up to 47,300 lm / 110W up to 325W
- L70 > 36,000 hrs
- Local or remote sensors available



TEMPESTA® LED



WET/IP65/VANDAL RESISTANT

- Polycarbonate construction
- In-field ceiling / wall configuration
- Up to 60' on center spacing
- Surface, recessed or T-bar mount



BOXLED®



WET/NEMA 4X/IP66/VANDAL RESISTANT

- Die-cast aluminum housing
- 15,000 up to 25,300 lm / 150W up to 230W
- L70 > 60,000 hrs
- Multiple mounting configurations



FORMA FME



INDOOR/DAMP

- Durable die-cast construction
- Universal mounting
- Low profile design
- Custom wording available



NUVOLA



WET/IP65

- Durable die-cast construction
- 10,100 up to 40,800 lm / 90W up to 300W
- L70 > 60,000 hrs
- Multiple mounting configurations



FORTEZZA BU



INDOOR/WET/IP66/VANDAL RESISTANT

- Heavy duty die-cast aluminum housing
- Impact resistant polycarbonate cover
- Tamper resistant screws for unit integrity
- Universal mounting

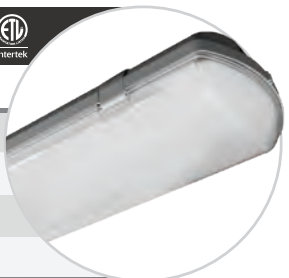


BS100LED-X



WET/IP66/VANDAL RESISTANT • (4')

- 100% polycarbonate
- 10,000 up to 12,400 lm / 80W up to 100W
- Integrated emergency available
- Multiple mounting configurations





LIGHTING NEEDS:

- Know the exact type of environment the products are going into
- Special classifications may be required
- Expect longer delivery times for hazardous rated products



QUESTIONS YOU SHOULD ASK:

- Does the product have the correct certifications for this application?
- What is the products warranty?
- Is the product maintenance friendly?

CASTEX



WET/IP67/IK09/HAZARDOUS

- Aluminum alloy housing
- 3,000 up to 21,000 lm / 30W up to 200W
- Class I, Div 2, Groups A-D/Group II
- Multiple mounting configurations



PLURALUCE® HAZARDOUS



HAZARDOUS/NEMA 4X/WET

- Durable aluminum construction
- Up to 60' on center spacing
- C1, D2, Groups A-D / C2, D1,D2, Groups E-G
- 3 field selectable optics



ROBUSTO® COMBO



HAZARDOUS/NEMA 4X HOUSING/VANDAL RESISTANT

- Durable fiberglass construction
- Single face, wall mount design
- C1, D2, Groups A-D
- Custom wording available



ROBUSTO® UNIT



NEMA 4X/VANDAL RESISTANT

- Durable fiberglass construction
- Wall mount design
- C1, D2, Groups A-D: T2B
- C1, Zone 2, IIA, IIB & IIC: T1 & T2



DLX100-IND



INDOOR/EXPLOSION PROOF

- Non-electrical, photoluminescent illumination
- Visible up to 100ft
- Effortless installation, no wiring
- Multiple configurations available



HDZ



HAZARDOUS

- Copper free construction
- Exit, EM, Combo & Remote available
- C1, C2, C3, D1,D2, All Groups
- 36W - 140W



HZ100



INDOOR/WET/IP66 • (2', 4')

- 100% polycarbonate construction
- Stainless steel mounting brackets
- C 1, D2, Groups A - D
- Multiple mounting configurations



BRAVADO® HZ



WET/NEMA 4X/IP66/VANDAL RESISTANT

- Heavy duty die-cast construction
- Up to 70' on center spacing
- C1, D2, Groups A-D / C2, D1,D2, Groups E-G
- 18W - 60W





COMMERCIAL





LIGHTING NEEDS:

- Know what light levels you need
- Understand the hours of operations required
- Aesthetics play a major role in the lighting design



QUESTIONS YOU SHOULD ASK:

- Does my luminaire meet the light level requirements?
- Is maintenance ease an important factor?
- Does this application require a specific CRI?

PLANEX® ECO



INDOOR/DAMP/IP44/TYPE IC • (1'x4') (2'x2') (2'x4')

- Emergency back-up available
- 4,800 up to 6,300 lm / 40W up to 50W
- L70 > 50,000 hrs
- Multiple mounting configurations

VALORE



INDOOR/DAMP (2', 4')

- Glare reducing diffuser
- 15,500 up to 47,300 lm / 110W up to 325W
- Local or remote sensors
- Easy installation, reduced maintenance

STRIPLLED



INDOOR/DAMP/IP44 • (4', 8')

- 4000k & 5000k standard
- 3,300 up to 9,200 lm / 24W up to 68W
- Wireless lighting control, 0-10V dimming
- Multiple mounting configurations

BOXLED® MINI



WET/DAMP/IP66

- Durable die-cast construction
- 1,300 up to 2,800 lm / 20W up to 40W
- Compact design
- Multiple mounting configurations

GRAN BELLA® LED



INDOOR • (22")

- Traditional design
- 13,300 up to 19,000 lm / 125W up to 175W
- L70 > 36,000 hrs
- Custom housing and refractor colors

DRACO® BS720LED



INDOOR • (12", 16")

- Custom housing and refractor colors
- 2,400 up to 5,200 lm / 30W up to 55W
- L70 > 54,000 hrs
- Multiple distribution patterns

BS101LED-ECO



WET/IP65/VANDAL RESISTANT • (4')

- 100% polycarbonate construction
- 6,000 up to 6,600 lm / 55W
- Economical solution
- Multiple mounting configurations





CYCLONE® OVAL



INDOOR

- Compact extruded aluminum housing
- Pivot system allows wall or ceiling mount
- Field installable chevrons
- Custom housing colors



CYCLONE® ECO



INDOOR/DAMP

- Thermoplastic housing
- Pivot system allows wall or ceiling mount
- Universal red & green panels
- Economic architectural solution



BRUNO



INDOOR/DAMP

- Die-cast aluminum construction
- Truly universal edge-lit design
- Surface or recess mount
- Custom wording available



PLURALUCE® RECESSED



INDOOR/DAMP

- Fully recessed design
- Up to 60" on center spacing
- 2 field selectable optics
- Custom housing colors



PEH-T20



INDOOR/DAMP

- Thermoplastic housing
- Fully adjustable 1.7W LED heads
- Surface wall or ceiling installation
- White or black finish offered



PLURALUCE® INDOOR



INDOOR/DAMP

- Durable aluminum construction
- Up to 60' spacing on center
- 3 field selectable optics
- Custom housing colors





LIGHTING NEEDS:

- Proper light levels are important in specific areas
- Energy savings and product life is focused on
- Ease of maintenance is important



QUESTIONS YOU SHOULD ASK:

- What is the expected product life?
- How does the product mount / install?
- What energy savings features are offered?

GRAN BELLA® LED



INDOOR • (22')

- Traditional design
- 13,300 up to 19,000 lm / 125W up to 175W
- L70 > 36,000 hrs
- Custom housing and refractor colors

SCALA



WET/IP65/VANDAL RESISTANT • (2')

- DLC approved for stairwells
- 3,500 up to 6,300 lm / 30W up to 50W
- Integrated emergency available
- Bi-level dimming, occupancy sensor

TURTLE LED



WET/IP66/VANDAL RESISTANT • (2', 4')

- Polycarbonate construction
- FWC approved, amber LED 590 nm
- Ideal for all coastal areas
- Multiple mounting configurations

BOXLED® FLOOD



WET/IP66/VANDAL RESISTANT

- Die-cast aluminum housing
- 15,000 up to 25,300 lm / 150W & 230W
- L70 > 60,000 hrs
- Multiple mounting configurations

DRACO® BS730LED



INDOOR • (12", 16")

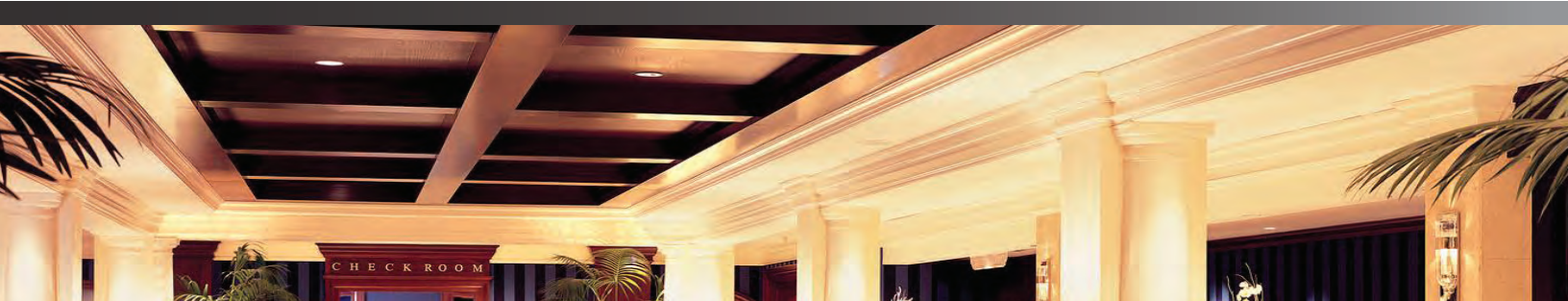
- Custom housing and refractor colors
- 2,700 up to 5,500 lm / 30W up to 55W
- L70 > 54,000 hrs
- Multiple distribution patterns

PLANEX® ECO



INDOOR/DAMP/IP44/TYPIC • (1'x 4')(2'x 2')(2'x 4')

- Emergency back-up available
- 4,800 up to 6,300 lm / 40W up to 50W
- L70 > 50,000 hrs
- Multiple mounting configurations





HOSPITALITY NEEDS

- Visually Appealing
- Easy installation
- Low maintenance
- Longevity
- Mounting Options



OL2+ PLUS



INDOOR

- Architectural die-cast trimplate
- Universal design for surface or recess mount
- Multiple panel configurations
- Custom wording available



CURVA



INDOOR/DAMP

- Economic architectural solution
- Pivot design for ceiling, wall or slope mounting
- Surface or Recess mount available
- Multiple panel configurations

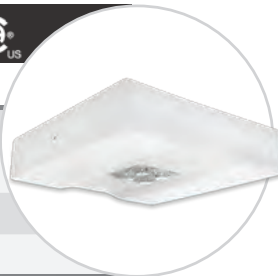


PLURALUCE® INDOOR



INDOOR/DAMP

- Durable aluminum construction
- Up to 60' spacing on center
- 3 field selectable optics
- Custom housing colors



OL2 COMBO



INDOOR

- 20-gauge steel housing
- LED up to 50W
- Quick connect installation
- Surface or recessed mounting





LIGHTING NEEDS:

- Durability is critical in school environments
- Light level requirements must be reached
- Ease of maintenance is very important



QUESTIONS YOU SHOULD ASK:

- Is the product vandal resistant?
- How does the product mount / install?
- What energy savings features are offered?

PLANEX® ECO



INDOOR/DAMP/IP44 • (1' x 4') (2' x 2') (2' x 4')

- Emergency back-up available
- 4,800 up to 6,300 lm / 40W up to 50W
- L70 > 50,000 hrs
- Multiple mounting configurations

BOXLED® MIDI



WET/IP66/VANDAL RESISTANT

- Durable die-cast construction
- 3,400 up to 11,700 lm / 50W up to 90W
- In-field distribution change
- Multiple mounting configurations

STRIPLLED



INDOOR/DAMP/IP44 • (4', 8')

- 4000k & 5000k standard
- 3,300 up to 9,200 lm / 24W up to 68W
- Wireless lighting control, 0-10V dimming
- Multiple mounting configurations

NUVOLA



WET/IP65

- Durable die-cast construction
- 10,100 up to 40,800 lm / 90W up to 300W
- L70 > 60,000 hrs
- Multiple mounting configurations

BS100LED



WET/IP66/VANDAL RESISTANT • (2', 4')

- 100% polycarbonate construction
- 3,600 up to 8,800 lm / 30W up to 70W
- L70 > 60,000 hrs
- Multiple mounting configurations

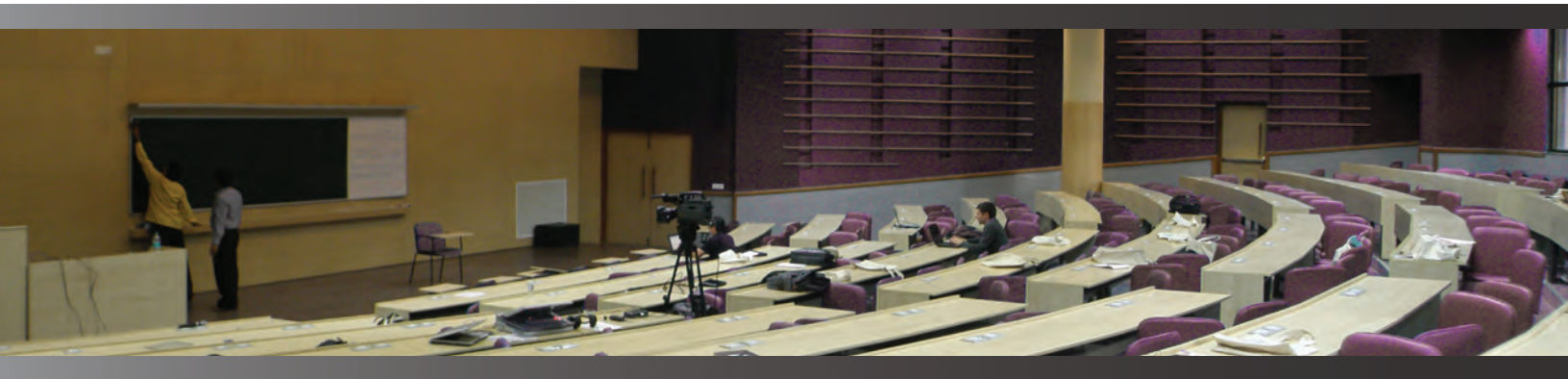
SPADA®



WET/IP66/VANDAL RESISTANT • (2', 4')

- Polycarbonate & aluminum housing
- 1,800 up to 4,900 lm / 20W up to 40W
- Low profile design
- Multiple mounting configurations





FTZ + Plus



WET/IP66/VANDAL RESISTANT

- Heavy duty die-cast construction
- Impact resistant polycarbonate cover
- Custom wording available
- Universal mounting



PLURALUCE® WP



WET/NEMA 4X

- 3 field selectable optics
- Durable aluminum construction
- Up to 60' on center spacing
- AC only, EM only or AC & EM



FTZ COMBO



WET/IP66/VANDAL RESISTANT

- Heavy duty die-cast construction
- Wall, ceiling or end mounting
- Impact resistant poly-carbonate cover
- Enclosed & protected heads



TEMPESTA™ LED ECO



IP65/WET/VANDAL RESISTANT

- Up to 42" spacing on center
- 925 lm & 22W
- 90 min emergency duration
- Multiple mounting configurations



EVR



INDOOR/VANDAL RESISTANT

- Durable 16 gauge steel construction
- Polycarbonate face
- Custom wording available
- Full length canopy



ECCO LUNA LED



WET/IP65/VANDAL RESISTANT

- Durable polycarbonate construction
- Fully enclosed heads ensure correct position
- Surface wall or ceiling mount
- Custom housing color available





LIGHTING NEEDS:

- You must know occupancy time of day and duration
- Understand the lighting code requirements
- Energy savings in office environments is critical



QUESTIONS YOU SHOULD ASK:

- How many hours a day is the office occupied?
- Are there areas that are often unused or used only when scheduled?
- Who handles the maintenance in the office?

STRIPLLED



INDOOR/DAMP/IP44 • (4', 8')

- 4000k & 5000k standard
- 3,300 up to 9,200 lm / 40W up to 60W
- Wireless lighting control, 0-10V dimming
- Multiple mounting configurations



PLURALUCE® RECESSED



INDOOR/DAMP

- Fully recessed design
- Up to 60" on center spacing
- 2 field selectable optics
- Custom housing colors



PLANEX® ECO



INDOOR/DAMP/IP44/TYPIC • (1'x 4')(2'x 2')(2'x 4')

- Emergency back-up available
- 4,800 up to 6,300 lm / 40W up to 50W
- L70 > 50,000 hrs
- Multiple mounting configurations



PACO



INDOOR/DAMP

- Compact, thermoplastic design
- Fully adjustable 1.5W LED heads
- Wall or ceiling surface mount
- White or black finished offered



DRACO® BS730LED



INDOOR • (12", 16")

- Custom housing and refractor colors
- 2,700 up to 5,300 lm / 30W up to 55W
- L70 > 54,000 hrs
- Multiple distribution patterns

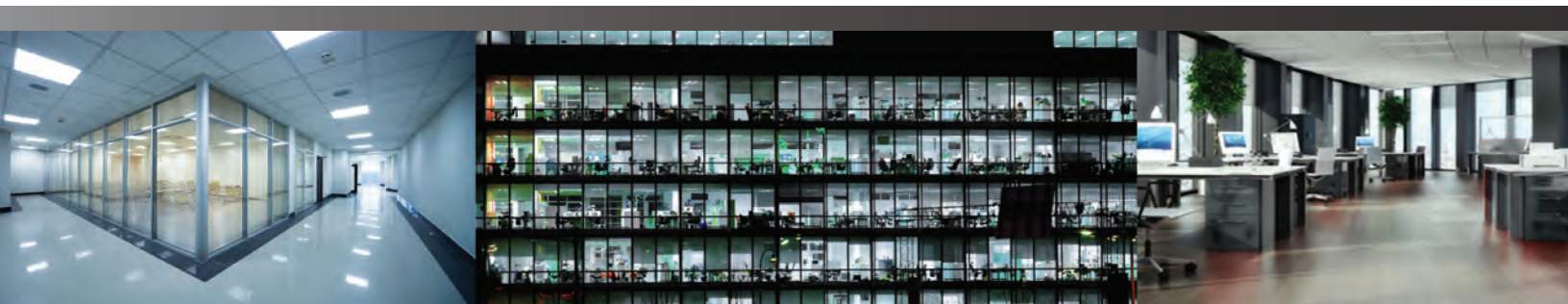


DRACO® BS720LED



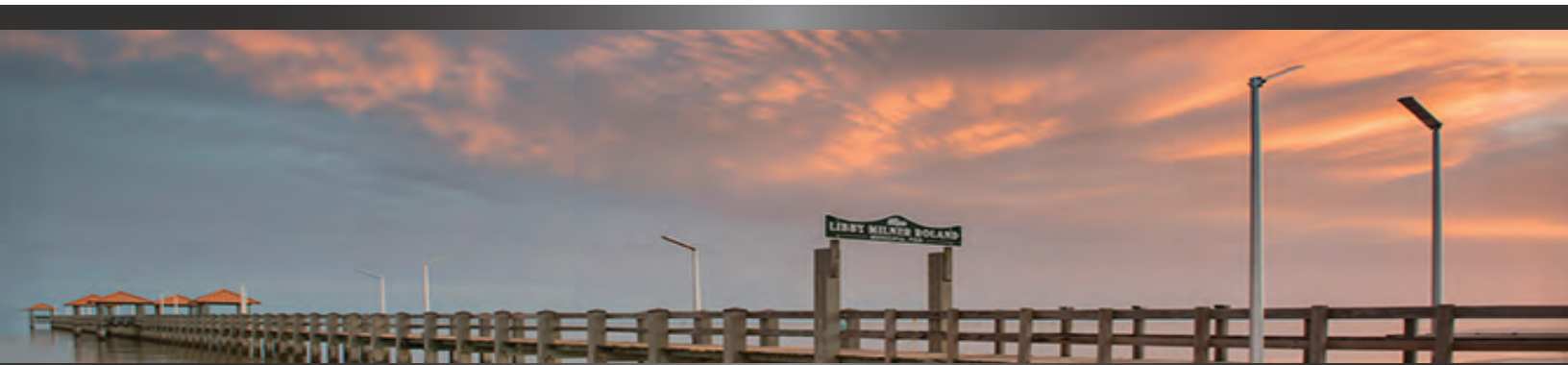
INDOOR • (12", 16")

- Custom housing and refractor colors
- 2,400 up to 5,200 lm / 30W up to 55W
- L70 > 54,000 hrs
- Multiple distribution patterns





EXTERIOR



EXTERIOR | PATHWAY/SIGNAGE/SITE/AREA



LIGHTING NEEDS:

- You must know the environment where the product is being installed
- Easy maintenance of exterior luminaires is important
- Know the hours of operation that the luminaires will be running

QUESTIONS YOU SHOULD ASK:

- What is the environment like that the luminaires will be installed in?
- Is the luminaire easily accessible?
- Can people come in direct contact with the luminaire?

LUCE SOLARE



WET/IP65

- All in one solution
- 1,500 up to 8,000 lm / 18W up to 72W
- 6500K standard
- 3 operating modes



BOXLED® MIDI



WET/IP66

- Durable die-cast construction
- 3,400 up to 11,700 lm / 50W & 90W
- In-field distribution change
- Multiple mounting configurations



GIRA SOLE



WET/IP65

- Custom top plate available
- 1,800 up to 2,600 lm / 36W
- Local or remote power supply
- Multiple distribution patterns



BOXLED® FLOOD



WET/IP66/VANDAL RESISTANT

- Die-cast aluminum housing
- 15,000 up to 25,300 lm / 150W & 230W
- L70 > 60,000 hrs
- Multiple mounting configurations



SPYDER®



WET/IP67 • (2', 4', 8')

- Single piece extruded aluminum construction
- 1,300 up to 2,800 lm / 20W, 30W & 40W
- Remote power supply
- Custom anodized finished available



TURTLE LED



WET/IP66/VANDAL RESISTANT • (2', 4')

- Polycarbonate construction
- FWC approved, amber LED 590 nm
- Ideal for all coastal areas
- Multiple mounting configurations



MULTIPURPOSE LUMINAIRES



WET/IP66/IK09/VANDAL RESISTANT/BUG RATED

- Die-cast aluminum housing
- 1,500 up to 33,000 lm / 12W up to 280W
- L70 > 372,000
- Multiple mounting configurations

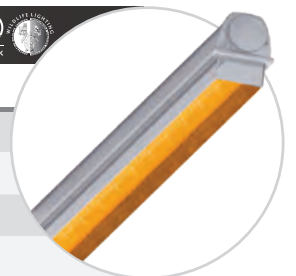


ACCIAIO® ECO AMBER



WET/IP66/VANDAL RESISTANT • (4')

- Polycarbonate construction
- FWC approved, amber LED 590 nm
- Ideal for all coastal areas
- Multiple mounting configurations





**OCEAN CENTER:
DAYTONA BEACH, FL**
Product: Gira Sole



GOOGLE: SAN FRANCISCO, CA
Product: Gran Bella, BS100



WALMART PROJECT
Product: Draco®, Spyder®
and BS100LED



**LIBBY MILNER ROLAND
MUNICIPAL PIER**
Product: Luce Solare





Disclaimer

Beghelli USA is constantly developing and improving the product range and performance. All descriptions, illustrations, drawings and specifications are up to date. Beghelli reserves the right to change specifications without prior notification or public announcement.

Publication date: June 2019



Beghelli



BEGHELLI USA

3250 Corporate Way

Miramar, Florida 33025

Tel.: 800.726.4316 / 954.442.6600

Fax: 954.442.6677

2017-2019 Beghelli USA, All Rights Reserved

Beghelli