

SOLUTIONS FOR
HAZARDOUS AREAS



Beghelli

THE
Beghelli
GROUP



BEGHELLI USA

Beghelli USA has been a leader in providing technologically advanced life safety products and luminaires to the North American market since 1989. We specialize in providing solutions for the commercial industrial markets; including parking garages, storage facilities, hazardous locations, and specialty environments.

Manufacturing products in South Florida has allowed **Beghelli USA** to optimize the design of innovative, code-compliant products that are continually introduced into the North American market. Our 70+ independent agents across the United States work at all levels of the lighting industry to promote Beghelli Solutions.

Beghelli USA is part of the Beghelli Group, headquartered in Northern Italy, a global lighting brand that brings its values to over 124 countries, including North America, South America, Europe and Asia; clearly demonstrating the international spirit of the company.

HAZARDOUS LIGHTING SOLUTIONS



Beghelli USA has expanded their line-up of luminaires to include a comprehensive line of hazardous location solutions. Offering low and high bay luminaires, flood lights, emergency and exit solutions, these heavy duty luminaires are all designed to perform in heavy industrial applications where extreme temperatures, flammable vapors and/or combustible dust is present.

TABLE OF CONTENTS

HAZARDOUS AREA CLASSIFICATIONS	4
HAZARDOUS LIGHTING SOLUTIONS	5
CASTEX FAMILY COMPARISON CHART	7
HAZARDOUS EMERGENCY LIGHTING SOLUTIONS	8

HAZARDOUS AREA CLASSIFICATIONS

CLASSES

Define the explosiveness or combustibility of the substances present in the atmosphere.

CLASS I: Locations where flammable gases, vapors, and liquids are present.

CLASS II: Locations where flammable dust particles are present.

CLASS III: Locations where flammable or easily ignitable fibers or flyings are present.

DIVISIONS

Define the degree of danger given the concentration of explosives or combustible substances in the atmosphere.

DIVISION 1: Hazardous elements are PERMANENTLY or CONSTANTLY present in the environment.

DIVISION 2: Hazardous elements are TEMPORARILY present in the environment.

*NOTE: A fixture for a Division 1 environment does not mean it is suitable for a Division 2 environment.

GROUPS

Define the range of explosivity or combustibility of the substances present in the atmosphere.

Atmospheres that contain:

GROUP A: Acetylene

GROUP B: Hazardous gases or vapors, such as propylene oxide and butadiene; or substances with a percentage greater than 30% by volume.

GROUP C: Ethyl, ethyl, ethylene ether, acetaldehyde, cyclopropane, and asymmetric dimethylhydrazine.

GROUP D: Acetone, Ammonia, Benzene, Gasoline, Butane, Ethane, Hexanes, Methanes, Petroleum, Naphtha, Octane, Pentanes, Propylene, Styrene, Toluene, Xylene, etc.

GROUP E: Metal powders, such as aluminum, magnesium and their commercial alloys, and other metals of similar characteristics.

GROUP F: Coal, charcoal or coke powder.

GROUP G: Flour, starch, grain dust, wood, plastics.





CASTEX 150

The **CASTEX 150** is classified for Class I, Division 1 locations. The gray, die-cast, copper free aluminum housing allows it to stand up to environments with high humidity, high vapor, high dust and high temperatures.

Next in line in the CASTEX family is the **CASTEX 300**. This fixture is housed in an A383 aluminum alloy and is built using a 4 mm tempered glass diffuser, which reduces the glare. The CASTEX 300 is ideal for use in heavy industrial areas such as mining, refineries, chemical, fuel and marine locations



CASTEX 300



CASTEX 310

The **CASTEX 310** is similar to the 300; however, it differs in certification and features a Class I, Division I certification for the most extreme environments.

HAZARDOUS LIGHTING SOLUTIONS



CASTEX 320

Adding to the line of Class I, Division I solutions, Beghelli offers the **CASTEX 320**. This fixture is housed in A383 aluminum alloy and features a 4 mm tempered glass diffuser that provides a wide 120° distribution. The **CASTEX 320** is ideal for mines, refineries, chemical, food and coastal marine facilities.

For a vapor tight hazardous solution, Beghelli offers the **CASTEX 400**. This low maintenance, weatherproof fixture is made with a stainless steel body and a polycarbonate lens. The **CASTEX 400** is perfect for power generation stations, mines, military, oil, chemical production and marine and ocean platform applications.



CASTEX 400



CASTEX 510

The **CASTEX 510** comes standard in gray with a surface/wall mount bracket. Housed in die-cast copper-free aluminum, the **CASTEX 510** comes with a polycarbonate diffuser and wide, 120° distribution. The **CASTEX 510** is ideal for the oil and gas industry, paint facilities, pumping stations, metal smelting, foundry and fabrication, food and distilling and other high humidity, high vapor, high dust and high temperature locations.

Rounding out the CASTEX is the **CASTEX 600**. This Class I, Division 1 solution protects against high humidity, high vapor, high dust and high temperature locations. The 600 is gray in color and comes housed in die-cast copper-free aluminum with a 4 mm polycarbonate lens.



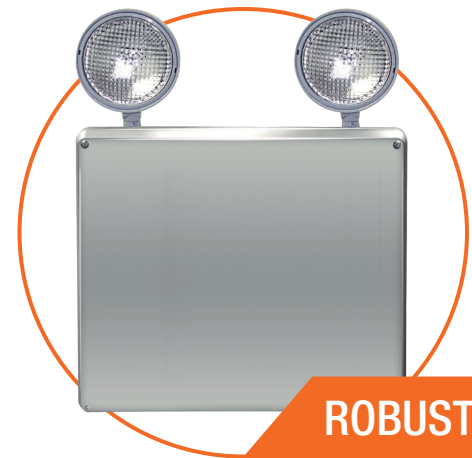
CASTEX 600

CASTEX COMPARISON

CASTEX PORTFOLIO	CAS150	CAS300	CAS310	CAS320	CAS400	CAS510	CAS600
OPERATION	HT (AC Only)	HT (AC Only)	HT (AC Only)	HT (AC Only)	HT (AC Only)	HT (AC Only)	HT (AC Only)
CLASSIFICATIONS							
Class I Division 1 Groups C & D	●		●	●			●
Class I Division 2 Groups A,B,C,D	●	●	●	●	●	●	●
Class II Division 1 Groups E,F,G	●	●	●	●	●	●	●
Class II Division 2 Groups F & G	●	●	●	●	●	●	●
Class III	●	●	●	●	●	●	●
HOUSING	Die-cast copper-free aluminum	A383 aluminum alloy	A383 aluminum alloy	A383 aluminum alloy	Stainless steel	Die-cast copper-free aluminum	Die-cast copper-free aluminum
COLOR TEMP	5000K	5000K	5000K	5000K	5000K	5000K	5000K
DIFFUSER	N/A	4 mm tempered glass	4 mm tempered glass	4 mm tempered glass	Polycarbonate	Polycarbonate	Polycarbonate with tempered glass cover
WATTAGE	30W, 40W	60W, 100W, 150W, 200W	60W, 80W, 100W, 150W, 250W	60W, 80W, 100W, 150W	30W, 50W	40W, 60W, 80W	40W, 50W, 60W, 80W, 100W
LUMENS	4200-5600 lm	8400-28000 lm	8400-35000 lm	8400-21000 lm	4200-7000 lm	5600-12000 lm	5600-14000 lm
OPERATING TEMP	-40°F - 149°F (-40°C - 65°C)	-40°F - 131°F (-40°C - 55°C)	-40°F - 140°F (-40°C - 60°C)	-40°F - 131°F (-40°C - 55°C)	-40°F - 140°F (-40°C - 60°C)	-40°F - 140°F (-40°C - 60°C)	-40°F - 140°F (-40°C - 60°C)
MOUNTING	Surface Pendant	Surface Pendant Hook	Surface Pendant Hook	Surface Pendant	Surface Cable Pole	Surface	Surface Pendant Chain

HAZARDOUS EMERGENCY LIGHTING SOLUTIONS

The **ROBUSTO UNIT** has a standard 120/277V input. The solid state, high efficiency, dual rate charger provides precise float voltage control and incorporates a low voltage disconnect for optimum protection. Fuse protection is standard. The durable NEMA 4X fiberglass enclosure is corrosion and vandal resistant. The housing is fully gasketed and is supplied standard in an industrial gray finish. The **ROBUSTO UNIT** can be surface mounted. Magnetic test switch and LED status indicator are standard. The ROBUSTO series is approved for use in Class 1, Division 2, Groups A, B, C and D.



ROBUSTO UNIT



**ROBUSTO
COMBO**

The **ROBUSTO COMBO** (RBO-C) has been designed for harsh and hazardous environments - and is approved for use in Class 1, Division 2, Groups A, B, C and D applications. Like the ROBUSTO UNIT, the combo unit is made with a durable NEMA 4X fiberglass enclosure making it corrosion and vandal resistant. The **ROBUSTO COMBO** (RBO-C) is configured with high-output red or green LEDs and two weatherproof PAR36 heads.

The **ROBUSTO EXIT** (RBO-E) comes with standard 120/277V input on all versions, including the HT. Self powered (SA) models use maintenance free, Nickel Cadmium batteries that provide a minimum 90 minutes emergency duration with standard fuse protection. The durable NEMA 4X fiberglass enclosure comes standard in an industrial gray finish and is corrosion and vandal resistant. The **ROBUSTO EXIT** (RBO-E) can be surface mounted. Offered in a single face version only, with removable chevrons. The self powered (SA) version comes standard with a LED status indicator and a magnetic test switch.



ROBUSTO EXIT

HAZARDOUS EMERGENCY LIGHTING

The **HDZ** is the base unit for the HDZ line-up of heavy-duty, Class I, Division 1 hazardous location life safety solutions. This self-contained unit is constructed from corrosion resistant, copper-free, die cast aluminum. Attached to the product is a quick access thread on the cover, allowing for trouble-free installation, reducing maintenance time and cost. A one-way stainless steel breather provides proper and effective unit ventilation. The **HDZ** must be specified by Category, Group and Division – and surface wall, ceiling or pendant mount.



HDZ UNIT



HDZ REMOTE

The **HDZ REMOTE** offers remote emergency lighting that is designed to perform in hazardous locations. It can be specified as ceiling, wall or pendant mount – and can be configured with either one (1) or two (2) lamp and reflector assemblies. The **HDZ REMOTE** can support a wide variety of DC lamps including 6VDC, 12VDC or 24VDC. All lamp wiring is supplied pre-pulled, sealed and ready for input circuit connection.

When you need both an exit and emergency solution, the **HDZ Combo** (HDZ-C) is the ideal solution. Class I, Division I rated and constructed from corrosion resistant, copper free die-cast aluminum housing, as is the HDZ. It utilizes a high-efficiency two stage charger providing a fully automatic constant charging current with low voltage disconnect protection. The charger also has brownout and short circuit protection.



HDZ COMBO



HDZ EXIT

The **HDZ EXIT** (HDZ-E) finishes off the HDZ series. Configurable with either single or double faceplates. Field removable chevrons come standard. Exit sign faceplates and frame are constructed from durable 20 gauge steel and come standard with a gray powder coat finish. Custom epoxy-based powder coat finishes are also available. Single or double face versions must be specified. Class, division and group must be specified.

HAZARDOUS EMERGENCY LIGHTING



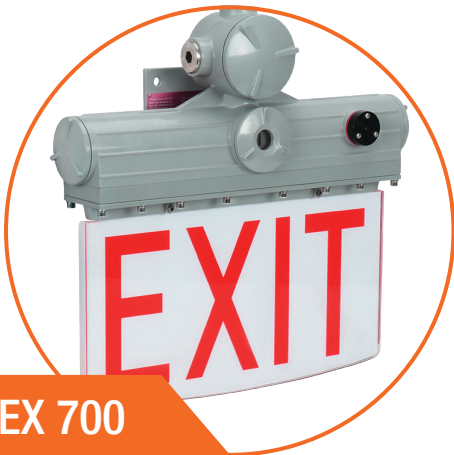
**BRAVADO
HAZARDOUS**

The **BRAVADO HZ** (BRV-HZ) is certified to perform in Class I, Division 2 environments. The vandal resistant design provides security and reliability. The **BRAVADO HZ** (BRV-HZ) is rated NEMA 4X and IP66 and is designed to perform in applications where the environment would punish any other unit. The compact and low profile design allows the unit to be incorporated into the architecture of the installation.

The **PLURALUCE® HAZRDOUS** (PLURALUCE® HZ) is engineered for environments where hazardous gas or dust may be present. The compact design of the **PLURALUCE® HAZARDOUS** (PLURALUCE® HZ) is fully gasketed for protection against wet and dust-filled environments. The housing design acts as a heat sink ensuring efficient thermal management and long operating life of the LEDs. Configured with a two-wire 120-347VAC 50/60 Hz input the **PLURALUCE® HAZARDOUS** (PLURALUCE® HZ) features interchangeable optics that allow for optimum performance based on the installation.



**PLURALUCE®
HAZARDOUS**



CASTEX 700

The **CASTEX 700** is a hazardous location exit sign that comes standard in gray with a surface/wall mount bracket and optional pendant mounting. Housed in die-cast copper-free aluminum, the **CASTEX 700** is self powered and equipped with self-diagnostic features. The **CASTEX 700** is ideal for installation in oil and gas environments, chemical, marine, aerospace, metal treatment, food processing areas, and high vapor, dust and temperature locations. It comes with both red and green lettering options as well as the option for special wording.



HAZARDOUS EMERGENCY LIGHTING

NOTES:



4.2022

A large offshore oil rig is shown at sunset, with the sun low on the horizon and a dramatic sky of blue and orange clouds. The rig's structure, including a crane and various platforms, is illuminated by its own lights. The ocean is visible in the foreground.

Beghelli

BEGHELLI USA
3810 Executive Way
Miramar, Florida 33025 USA
954.442.6600 / @beghelliusa

www.beghelliusa.com